

# TRADING SOFTWARE

**FOR SALE & EXCHANGE**

<b>Trading Software 2 DVD</b> <i>300+ items cracked trading software.</i>	<b>\$350</b>
<b>TradeStation Systems DVD</b> <i>Wealth! All tested &amp; include screenshots. Open code. Official prices more \$200000! My recommendations and screenshots. ALL for EXCHANGE also!!!</i>	<b>\$590</b>
<b>MetaTrader Experts DVD</b> <i>250+ Experts! Official price more \$60000! <u>FREE Decompiling EX4-MQL!</u></i>	<b>\$490</b>
<b>eSignal Add-Ons CD</b>	<b>\$250</b>
<b>MetaStock DVD</b>	<b>\$100</b>
<b>Trading Books, Methods, Patters</b> <i>Subscribe for receipt links for FREE download more 700 items!</i>	<b>FREE</b>
<b>100+ Trading Video DVD's</b> <i>Less \$3 for one DVD (DVD Video or DivX format)</i>	<b>\$300</b>
<b>Full Collection</b>	<b>\$1490</b>

[Subscribe](#) for receipt more information & links for FREE download.

## Contacts

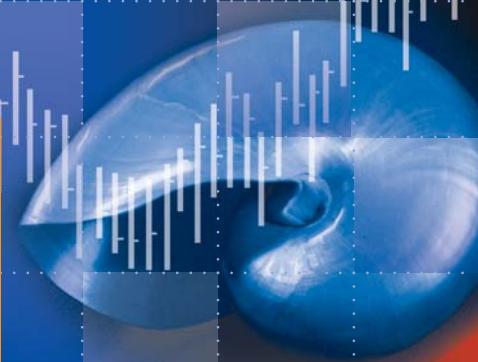
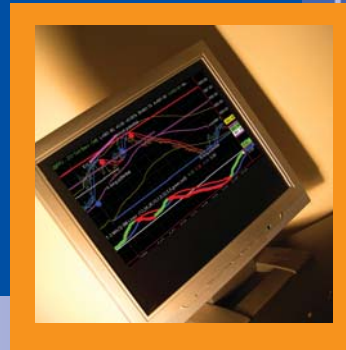
[andreybbrv@gmail.com](mailto:andreybbrv@gmail.com)  
[andreybbrv@hotmail.com](mailto:andreybbrv@hotmail.com)  
[andreybbrv@yandex.ru](mailto:andreybbrv@yandex.ru)  
Skype: andreybbrv

**NEXGEN**  
SOFTWARE SERVICES

# TOMORROW'S TRADING TECHNOLOGY

100% automated Fibonacci support and resistance levels that you can count on every single trading day in an instant.

**T-3 Fibs**  
*ProTrader*



## **Welcome the T-3 Fibs ProTrader Indicator**

Congratulations and thank you! In continuing with our commitment to bringing you tomorrow's trading technology our T-3 line of products gives you what we feel is the most powerful indicator package ever developed, the T-3 Fibs ProTrader. The following user guide will be a brief introduction and explanation into what our indicator package is doing and why it is so powerful and walk you through it's daily practical use to make money trading the markets.

Thank you again for your interest in our programs. We highly value your participation in the learning process and know that if you put in the work necessary you have the potential to dramatically improve your trading accuracy, confidence in your analysis and bottom line dollars with our programs.

## **Fibonacci Projections and Retracements defined**

Fibonacci price projections and retracements are very powerful ratios that can be used as a leading indicator. They use the current underlying structure of the market to attempt to predict where the market may go in the future. Fibonacci ratios are common in almost everything in nature from flowers, to the human body, seashells etc. Our intention is to show you how you can use this powerful tool to assist you in your trading. The basics of market price action are determined by supply and demand. This supply and demand can be measured in waves with charts and graphs. Elliot wave technicians attempt to do by counting waves. VERY GOOD users of Elliot wave have a high probability of calling exhaustive turning points or wave completions. The downside and the challenge to this methodology is that Elliot wave is extremely ambiguous and often too difficult for most traders to implement into their trading strategy. Fibonacci ratios however are just as, if not more powerful and can be done under a more rigid set of rules. After all, rules and discipline are the building blocks for successful trading. Fibonacci ratios are easy to calculate. You take the range from one pivot to the next and do the math. Simple. Many traders now use spreadsheets and simple charts and graphs to do basic fibonacci ratios. Some common ratios are .382, .500, .618 1.00 1.382, 1.618, 2.00 and 2.618. These ratios also as they get larger tend to have more exhaustive qualities. Where this takes a powerful turn is when you assemble a " CONFLUENCE" of these fibonacci ratios in a well-defined area.

When you are able to take that one step further and apply a confluence of ratios from multiple timeframes and multiple degrees within the same chart, that confluence area develops into a powerful synergistic area that can be effectively traded to or off of depending upon your personal trading style. Our T-3

Fibs ProTrader will automatically do this complex, multiple timeframe analysis and automatically plot the areas of highest confluence and also tell you the strength of that level relative to other areas on the charts. The program automatically calculates the best pivots from which to do projections and retracements from on each of your specified timeframes, runs all possible fibonacci ratios and then plots those projections individually for you to see or will automatically rank them according to their exhaustive qualities and number of each in the confluence areas for you. Even if you had all day to run calculations you it would be very difficult to duplicate the accuracy and performance of the indicators. However, the old adage time=money has never been truer than in trading the markets and T-3 Fibs ProTrader will give the foresight needed and the time necessary to make GOOD trading decisions based upon ALL possible combinations of data.

### **T-3 Fibs ProTrader - How It Works**

The purpose of this indicator is to make money by calculating in advance where the market has the highest potential to go, stop and turn around. This knowledge will give you the foresight to make *HIGHLY EDUCATED* trading decisions before you enter the market.

How is this possible? ---- First a very small lesson on fibonacci price confluence analysis.

Fibonacci projections and retracements are, by simple definition: using known ranges or swings in the market that have already happened (high and low pivots) and then multiplying that range by known fibonacci ratios then adding or subtracting that (total range) to or from those pivots. Then using those projections and past ranges in an attempt to predict where the market could go to and stop in the near future by plotting areas where there is a higher number of projections and retracements falling in one area.

Once we have these fibonacci projections we look for a *GROUPING* or *CONFLUENCE* of the projections. Typically there will be 3-6 areas where the majority of your projections and retracements will fall into a relatively tight area. The confluence areas tend to have a high occurrence of support and resistance. These areas become much more powerful and useful as support and resistance areas as additional ratios are added from different areas on the same chart and *ALSO* when this area of confluence is also visible from several different timeframes. For example confluence from a 1- minute, 5-minute, 30-minute chart in the same area will be much more powerful then just one of the timeframes by itself.

This predictive analysis is done with 4 types of Fibonacci projections. Even using just one of these projection techniques will give you a distinct advantage over the market but when you combine these four power techniques into one complete analysis along with multiple time frame analysis you get the most powerful, synergistic combination available to you as a trader for pre-determining support and resistance. The T-3 Fibs ProTrader will automatically do all possible combinations of the Fibonacci analysis for you without you having to do any of these calculations or pivot detection yourself.

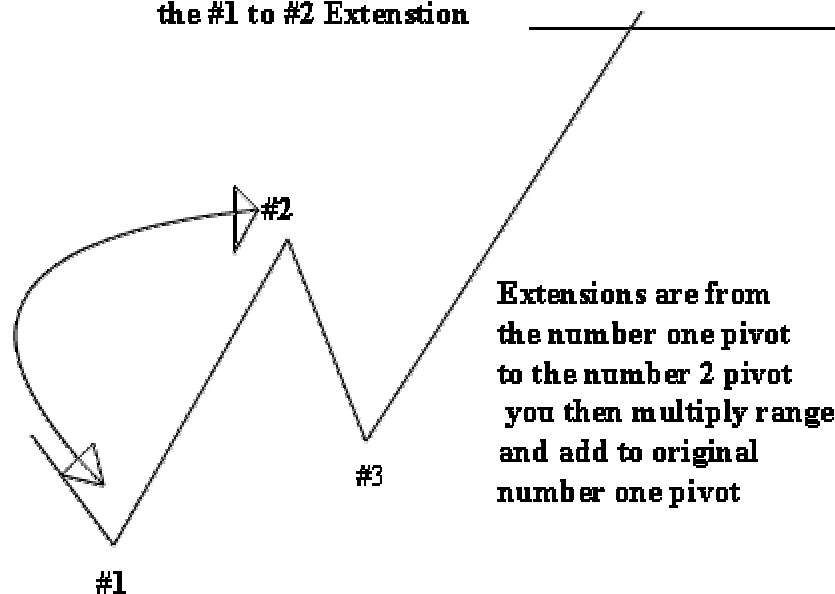
## **The 4 main types of Fibonacci Projections Used**

There are 4 main types of Fibonacci Price projections that can be done. Definitions and examples of each will be shown.

1. Extensions
2. Alternates
3. Expansions
4. Retracements

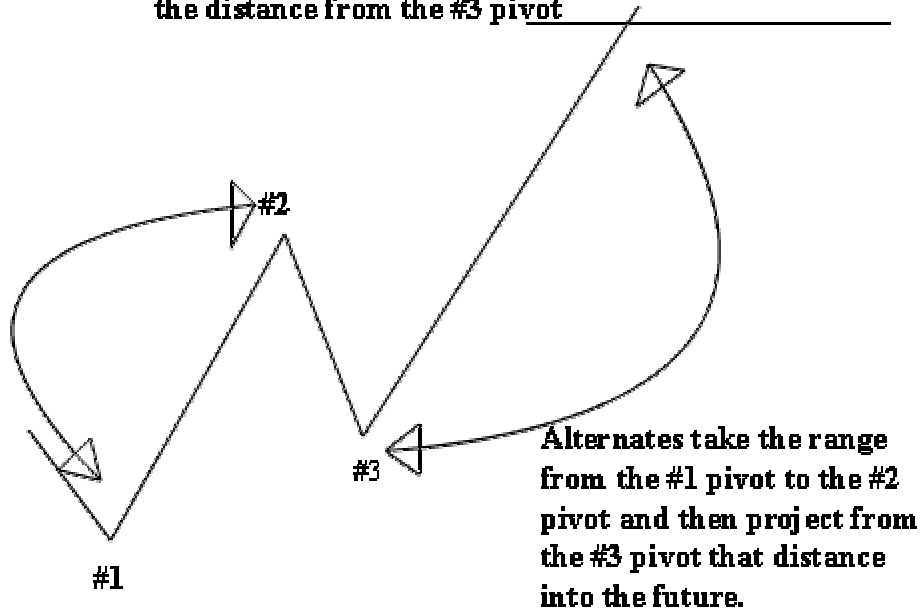
1. Extensions take the range from point #1 to Point #2 and multiplying that distance by a Fibonacci number, add the two numbers together and project into the future where a possible turning point could be.

**This will be your projection from the #1 to #2 Extension**



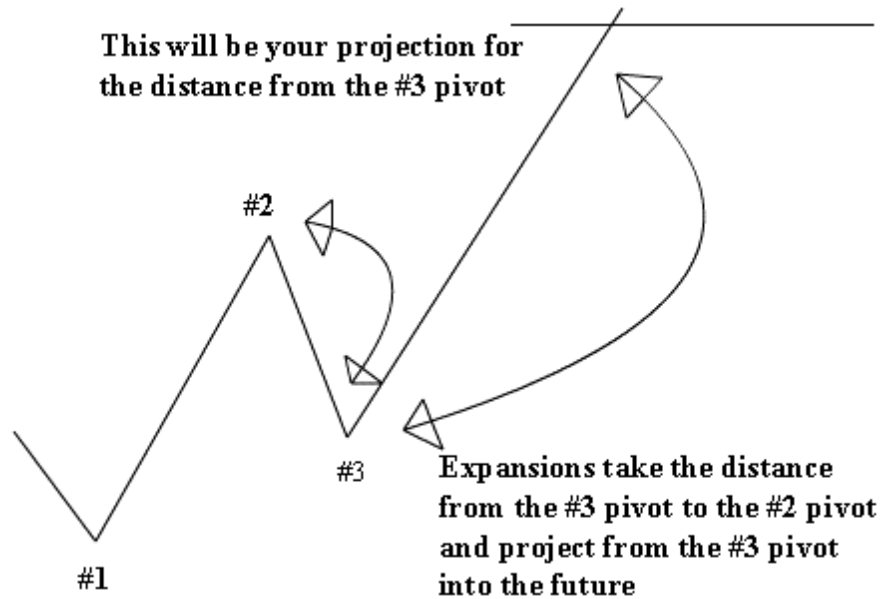
2. Alternates take the distance between point #1 and point #2 and adding that distance to point #3 to give you another type of projection into the future.

**This will be your projection for  
the distance from the #3 pivot**

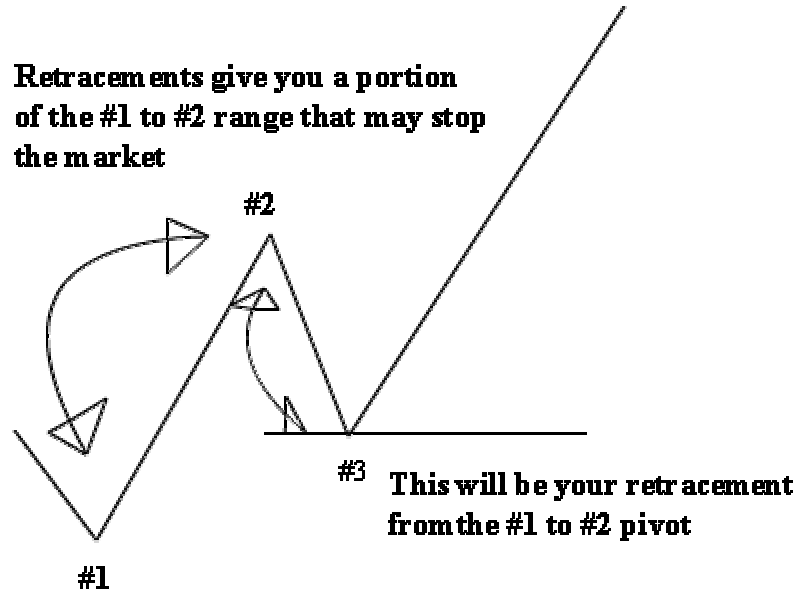


2. Expansions take the distance from the # 3 pivot to the #2 pivot and then multiply that distance by Fibonacci numbers and add that range to the #3 pivot.

**This will be your projection for  
the distance from the #3 pivot**

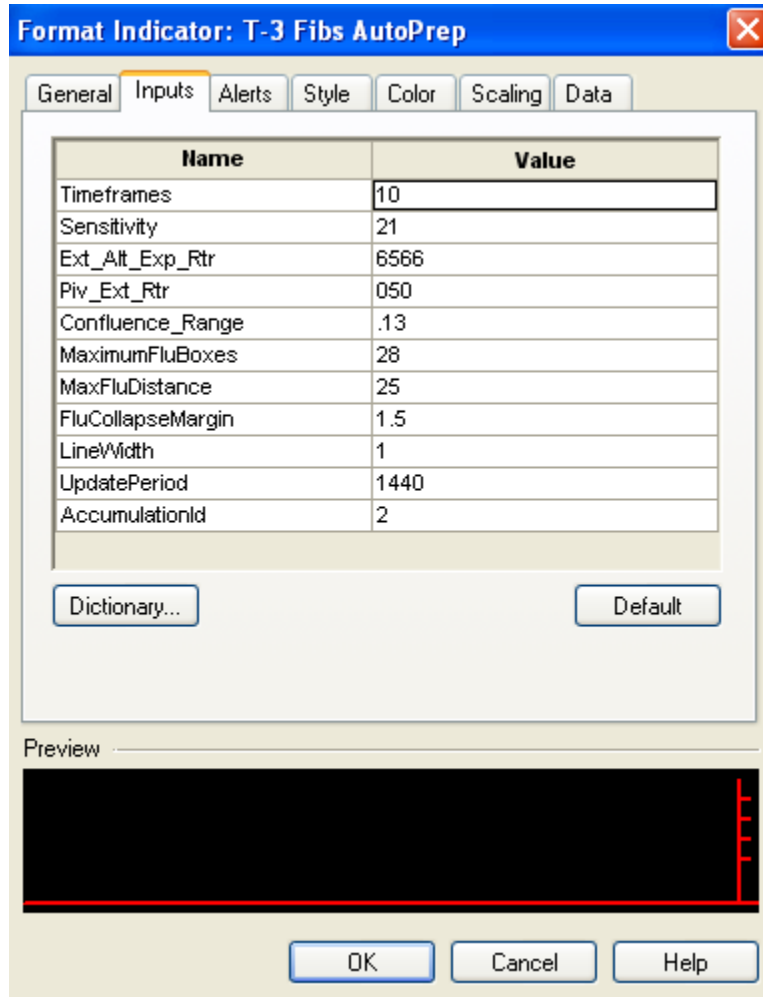


4. Retracements take the distance from one pivot to the next. Preferably a #1 to a #2 pivot and take a portion of that range that is generally 100% or less. Common ratios to calculate retracements are .382, .500, .618, and .786.



## INPUTS FOR THE INDICATOR

What do the inputs mean and how can you change them to make the program specific to your needs? First lets cover the inputs and their definitions.



**TIMEFRAMES:** will synthetically build higher timeframes from the timeframe that is plotted on your chart. You can build from 1-10 higher timeframes from your chart. 10 is the maximum number and is usually all that is needed with the exception of a daily chart.

**Sensitivity** - The higher the sensitivity the LESS SENSITIVE the indicators are to pivots and the lower the swing strength the MORE SENSITIVE the indicator will be for catching all the moves. Usable ranges are from 2-3 on daily data to 21-35 for indexes all the way up to 125 for the most major areas on data that is volatile and choppy both like a 10 year notes contract.



**P\_EXT\_ALT\_EXP\_RTC** – This input will tell the program which projections and retracements you would like to use to do your analysis for Price - In an effort to make this type of analysis suited to each individual trader and their personal preferences you may specifically turn on and off every possible combination of the indicators themselves. Again the program is pre-set and no adjustments need to be made. You must also tell the program which Fibonacci projections, retracements that you would like to run on each timeframe.

FOLLOWING IS A LIST OF THE INPUTS AND WHAT EACH DOES.

FibCodes 1 Table of plots;

There are 4 digits "0000" The first 4 control the projections and retracements.

The first digit will turn on and off the extensions or #1- #2 fibs. ("Z777)

Value of the first digit **0** will plot nothing

Value of the first digit **1** will plot only 1.618 extensions

Value of the first digit **2** will plot only 2.0 extensions

Value of the first digit **3** will plot 1.618 and 2.0 extensions

Value of the first digit **4** will plot only 2.618 extensions

Value of the first digit **5** will plot 1.618 and 2.618 extensions

Value of the first digit **6** will plot 2.0 and 2.618 extensions

Value of the first digit **7** will plot ALL 1.618 2.0 and 2.618 extensions

The second digit will turn on and off the alternates. . ("6Z40,)

Value of the second digit **0** will plot nothing

Value of the second digit **1** will plot 1: .786 alternates

Value of the second digit **2** will only plot 1:1 alternates

Value of the second digit **3** will plot only 1:1 and 1: .786 alternates

Value of the second digit **4** will plot 1:1.382

Value of the second digit **5** will plot 1:786 and 1:1.382

Value of the second digit **6** will plot 1:1 and 1: 1.382

Value of the second digit **7** will plot all alternates

The third digit will turn on and off the expansions. ("7240,)

Value of the third digit **0** will plot nothing

Value of the third digit **1** will plot only 1.618 expansions

Value of the third digit **2** will plot only 2.0 expansions

Value of the third digit **3** will plot 1.618 and 2.0 expansions

Value of the third digit **4** will plot only 2.618 expansions

Value of the third digit **5** will plot 1.618 and 2.618 expansions

Value of the third digit **6** will plot 2.0 and 2.618 expansions

Value of the third digit **7** will plot ALL 1.618 2.0 and 2.618 expansions

The fourth digit will turn on and off the retracements. ("7627,)

Value of the fourth digit **0** will plot nothing

Value of the fourth digit **1** will plot only 50 % Retracements

Value of the fourth digit **2** will plot only 61.8 % Retracements

Value of the fourth digit **3** will plot both 50 % and 61.8% Retracements

Value of the fourth digit **4** will plot only 78.6 % Retracements

Value of the fourth digit **5** will plot 50% and 78.6% Retracements

Value of the fourth digit **6** will plot 61.8% and 78.6 % Retracements

Value of the fourth digit **7** will plot ALL Three Retracements

**P\_PIVT\_EXT\_RTC** - this has been added to handle additional extensions and retracements values .

There are 3 digits "000" The first 3 control the first (Highest) timeframe, second 3 control the second timeframe, and so on.

The first digit out of the 3 turns on and off the # plot for the pivots themselves. (762,) The auto prep will not plot pivot numbers.

Value of the first digit    **0** will plot nothing.

Value of the first digit    **1** will plot only #1's

Value of the first digit    **2** will plot only #2's

Value of the first digit    **3** will plot #1's and #2's

Value of the first digit    **4** will plot only #3's

Value of the first digit    **5** will plot #1's and #3

Value of the first digit    **6** will plot #2's and #3's

Value of the first digit    **7** will plot ALL #1's #2's and #3's

The second digit will turn on and off the additional extensions or #1- #2 fibs. (7277,)

Value of the second digit    **0** will plot nothing

Value of the second digit    **1** will plot only .786 extensions

Value of the second digit    **2** will plot only 100% extensions

Value of the second digit    **3** will plot .786 and 1.00 extensions

Value of the second digit    **4** will plot only 1.382 extensions

Value of the second digit    **5** will plot .786 and 1.382 extensions

Value of the second digit    **6** will plot 1.00 and 1.382 extensions

Value of the second digit **7** will plot ALL .786, 1.00 and 1.382 extensions

The third digit will turn on and off the additional retracements. ("76**Z**.)

Value of the third digit **0** will plot nothing

Value of the third digit **1** will plot only .236 Retracements

Value of the third digit **2** will plot only .382 Retracements

Value of the third digit **4** will plot only 100 % Retracements

Value of the third digit **5** will plot .236 and 100% Retracements

Value of the third digit **6** will plot .382 and 100% Retracements

Value of the third digit **7** will plot ALL Three Retracements

**CONFLUENCERANGE** – after the program normalizes the data set it will start at the bottom of the range and start a scan. This input controls how WIDE the scan is for confluence. The larger the number of the confluence range the broader the window of confluence. .13 is the best default however up to .5 is the usable range that would be useful. REMEMBER- we are trying to find the HIGHEST probability turning point. A lot of this width will depend on you and your objectives for the market, how large you wish stops to be etc. A range of less than 1 or 1% is generally a very large window. The smaller you make this range down to .08% the "tighter" the confluence window will be and the more demanding the indicator will be on what is CONFLUENCE.

**MAXIMUM\_FLU\_BOXES** - This is the number of confluences that the program will look for initially when it is doing it's analysis. The max. is 30 and default at 28 is usually never to be changed.

**MAXFLUDISTANCE** - this is how far the program is going to look above and below the market when doing it's analysis. In S&P futures if range is 10-15 points then we want to have a setting that is at least twice the normal range. ( 20-25) points. If we are trading a stock that is only 1-dollar normal daily range then 2-3 dollars is as far away as the distance needs to be set. **This is one of the inputs that depending upon the market you are trading will need to be adjusted.**

**FLUCOLLAPSEMARGIN**- VERY IMPORTANT -- this input will compare two confluence areas and eliminate the weaker of the two that are within X points of each other and keep the stronger of the two. A filter of which areas are the best that are close to each other. The greater this number the less lines you will have on your charts and the more significant those areas will be. The smaller the number the more lines you will have and the less significant they will be. It is important that you set the software up properly to fit your needs and goals. For example if you are trading forex and trade for 10-20 pips then probably a 30-50 pip collapse would be what you would look for. Experiment with this setting. **This is one of the inputs that depending upon the market you are trading will need to be adjusted, the shorter your time horizon for your trades the smaller it will be , the larger your time horizon is the larger your number will be.**

**LINE WIDTH** -- how wide the support and resistance lines will plot. The larger the number the wider the line will be on the chart.

**UPDATE PERIOD** - how often the program (in minutes) will rerun it's analysis. 1440 is once per day. 720 is twice per day and so on. If you run Daily data .. you will need to make your MAX FLU DISTANCE INPUT much larger .. your Collapse much larger and you will need to set the update period to -7 which is once a week... you can also pick which day of the week you can update them on. See chart below.

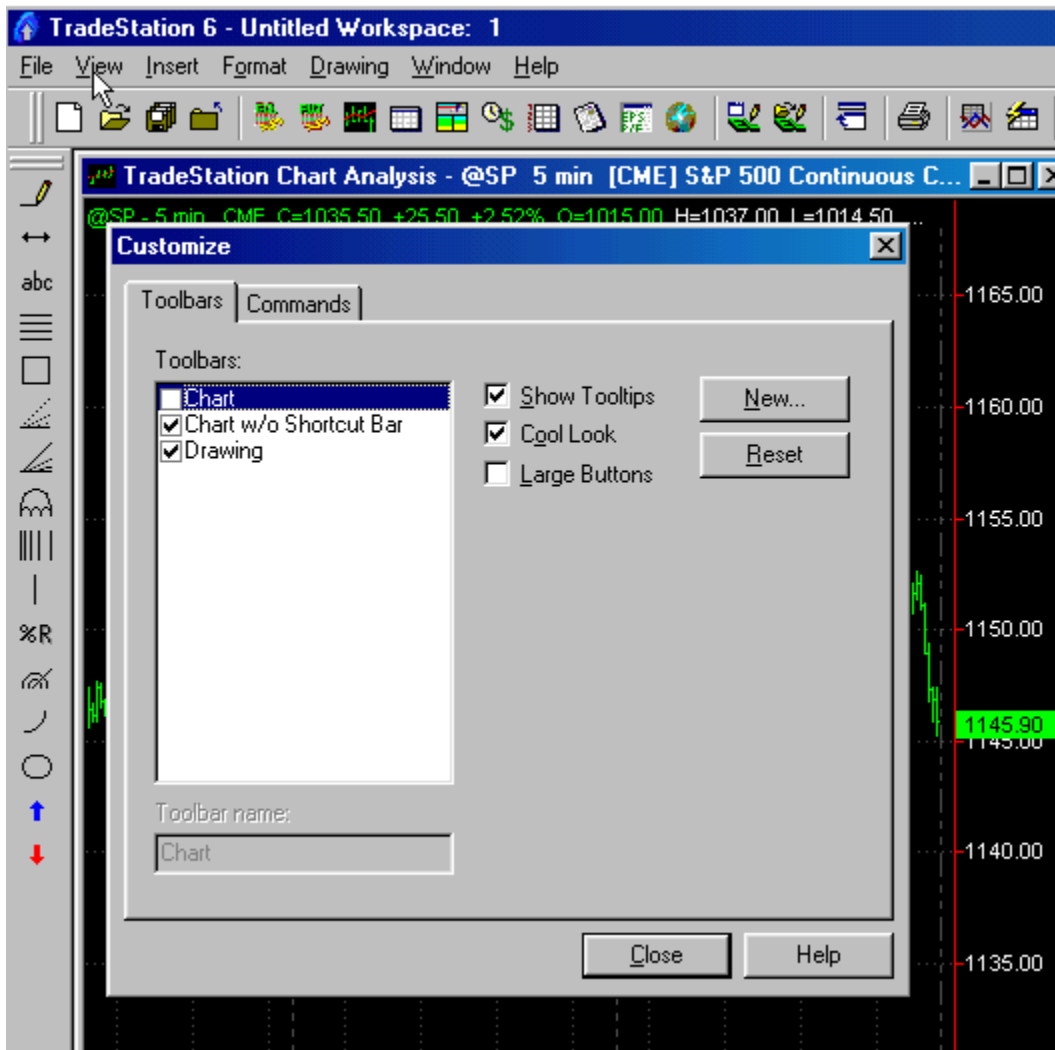
## **UPDATE PERIOD INPUT SETTINGS**

-7	Once a week
-7.5	Once a week update on Friday
-7.4	Once a week update Thursday
-7.3	Wednesdays
-7.2	Tuesdays
-7.1	Monday
-14.5	Once every two weeks Friday
-21.5	Once every three weeks Friday

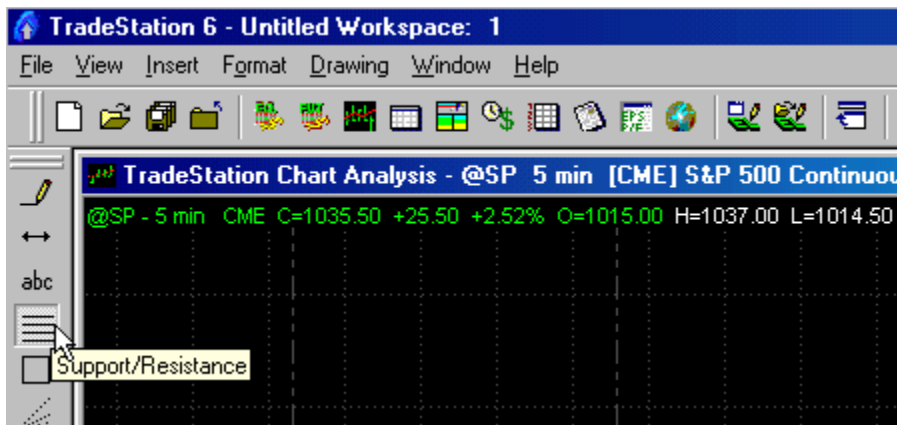
## To do manual fibonacci analysis using your Tradestation

The reason for this section is not so you will have to do manual fibonacci work yourself but so that you will fully understand the software and WHY key fibonacci areas are going to be the most important part of your trading plan going forward. T-3 Fibs already does all of this work and MUCH more automatically. The following is strictly for understanding.

Make sure you have your drawing toolbar shown to do this CLICK >View then TOOLBARS then CUSTOMIZE and check the drawing toolbox.



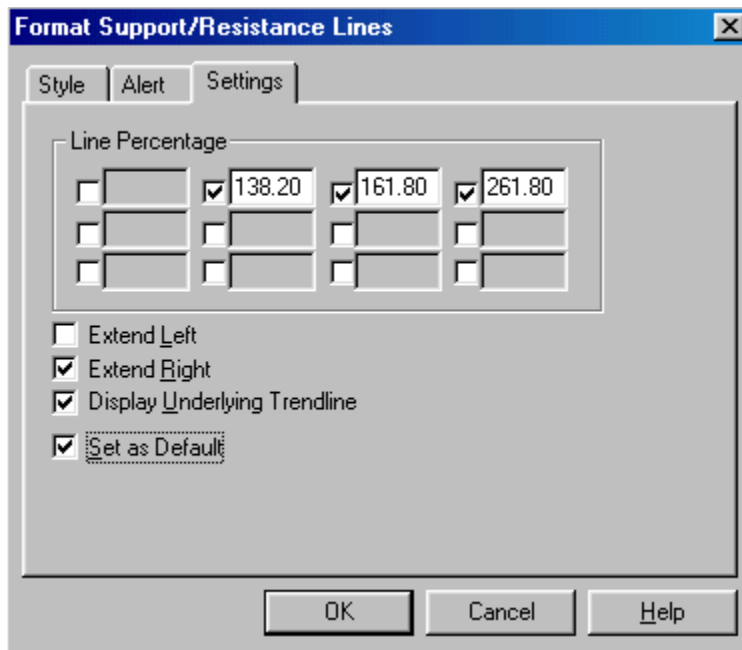
Then you will want to CLICK on your Support Resistance tool.



PLOT it on your chart anywhere by Dragging and dropping it. Then you will RIGHT CLICK it and format it to include the fibonacci ratios that you wish to plot.



For the purpose of this lesson we will do EXTENSIONS and EXPANSIONS FIRST so we will use some common ratios of 138.2%, 200%, and 261.8%. I will set these to default so they will be there each time I use the indicator.



Due to constraints of space we will not do EVERYTHING that we could possibly do but some of the basics on a single timeframe to show you the power of the analysis.

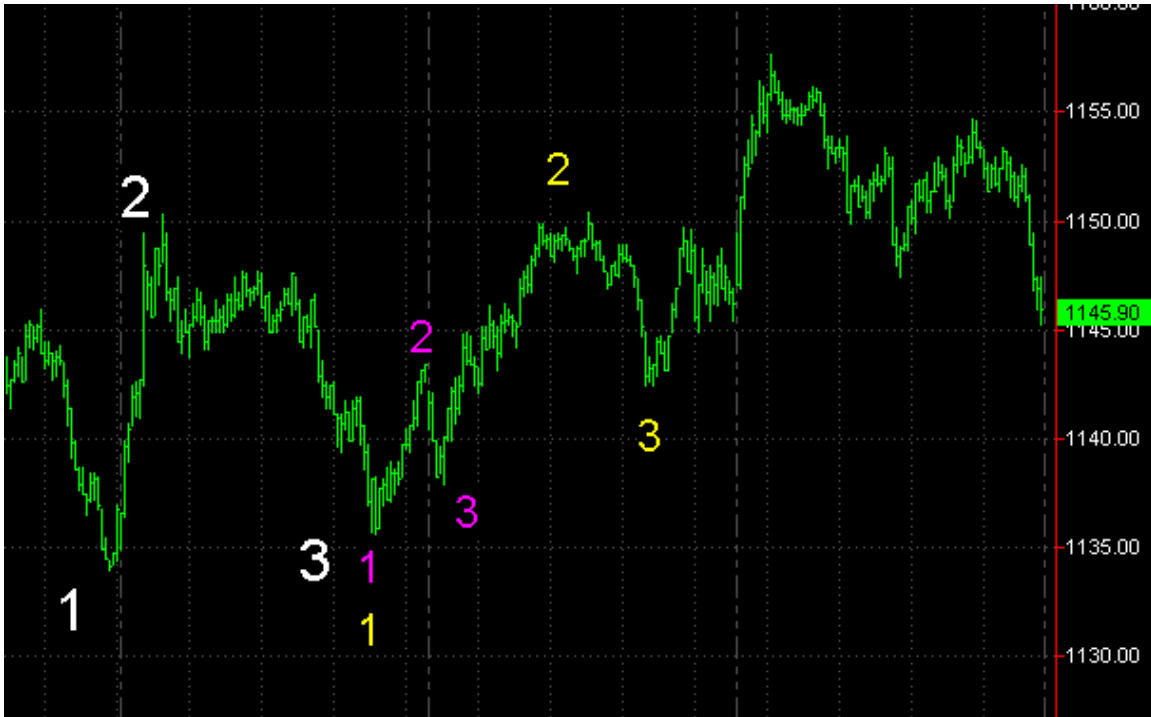


Let's look at our chart. We have the S&P 500 futures. 5-minute is our timeframe and we have made a bottom and looking for the termination of where the retracement could end.



WE must first label our pivots from which we will work.

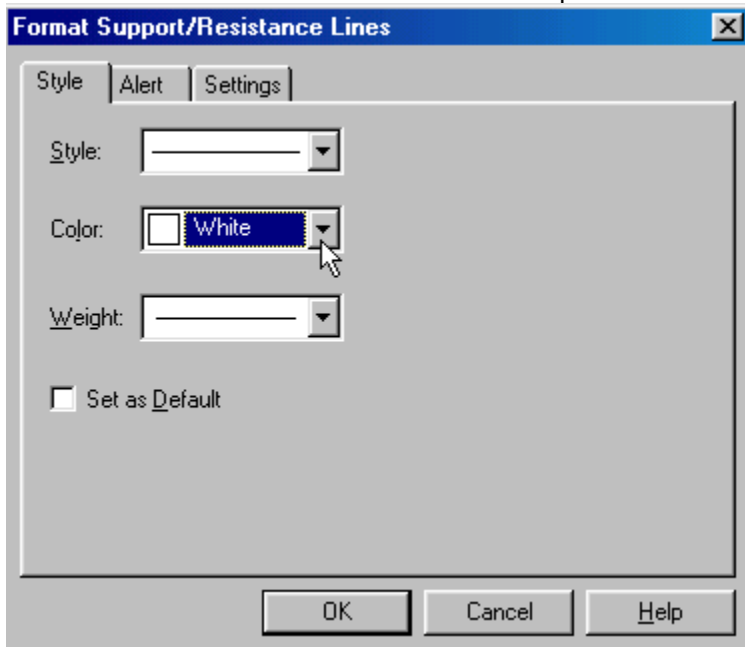
Just the basics of a #1, #2, #3 pivot. I have done each of the 1,2,3's in a different color so you can see them as separate swings with which we will work.



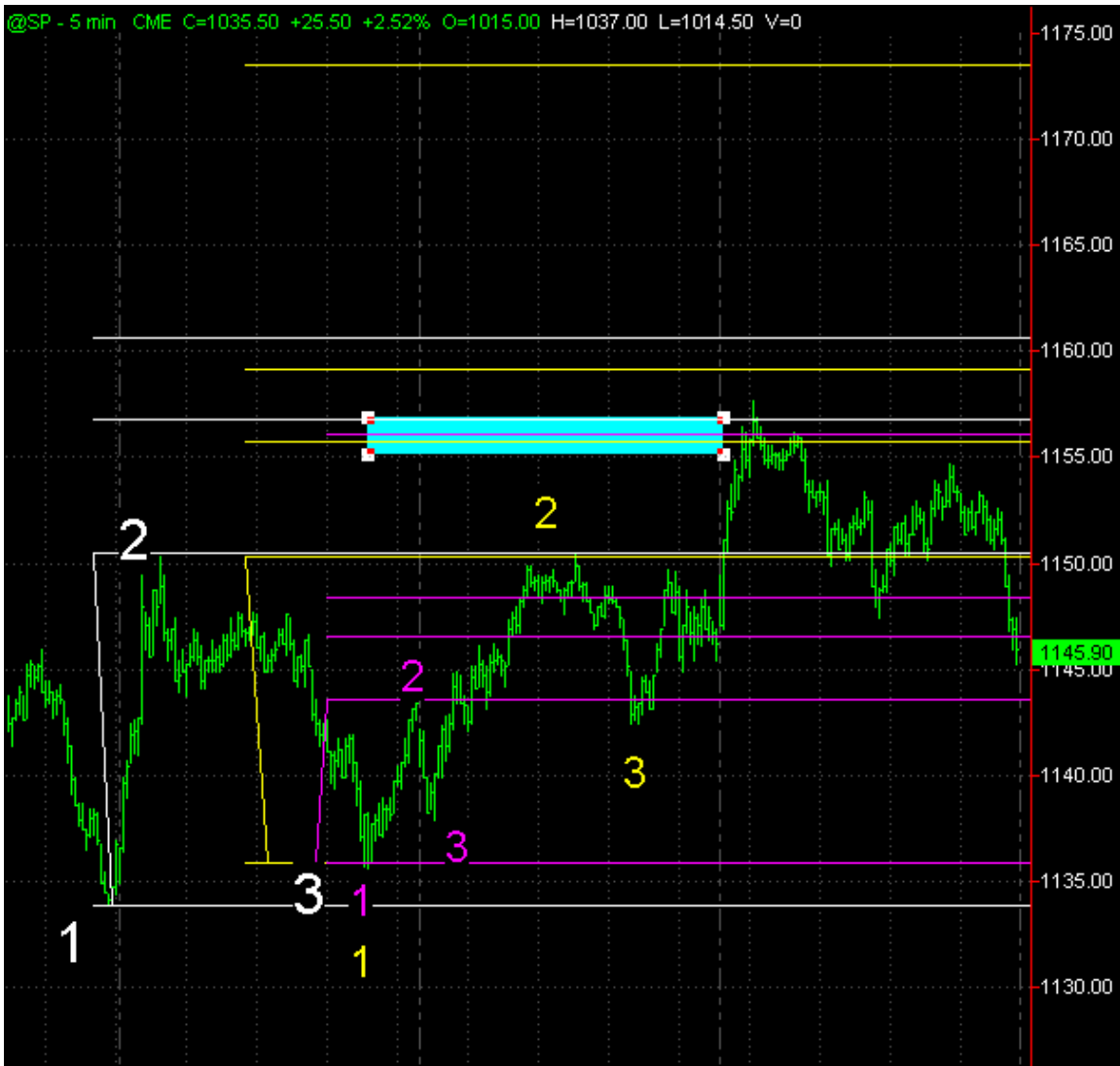
We will then grab our Support and Resistance tool in Tradestation and anchor (start it) at the #2 pivot and pull it down to our #1 pivot. As you hold it down you will see your extension values displayed.



We will then format the color to be white to keep it consistent with the labeling of our pivots.



We will repeat this process for each of our #2 and #1 pivot labeling. Notice we have an area of confluence or a grouping of projections from different levels on the chart that fall into a relatively tight area?



We will mark this area with color coordinated horizontal lines to keep our chart clean and move on to Expansions.



To do expansions we will pull the tool from the #2 to the #3 pivots.  
From the white #2 to the White #3 you will see another projection in the exact same window.



Repeat this process for all of your pivots.





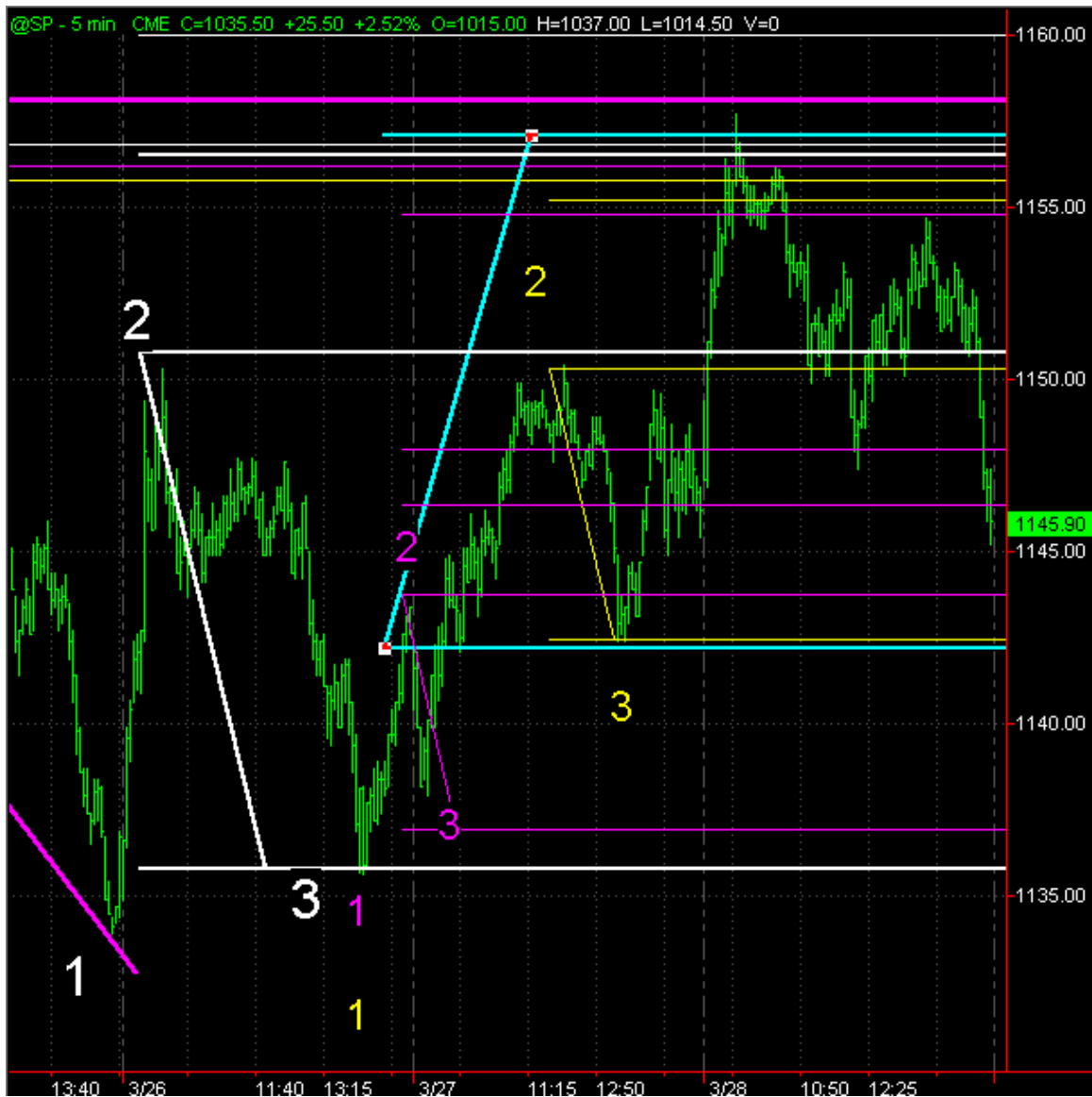
We color coordinate and now have an unmistakable window of fibonacci projections that offer us a tight window of confluence or grouping at the 1055-1057 price.



Now we will back up and look for a retracement that falls in this window as well. Using the top and bottom we are looking for the most exhaustive retracements which one of them happens to be 78.6% retracement. As you will see it falls in the 1158.50 area.



Now to do our ONLY alternate due to space limitations, we will use the YELLOW #1 , #2 , #3. To do this we will remove all of our fib ratios from our tool and pull from the #2 to the #1 pivot... we will then slide the tool up to the bottom of the #3 pivot and get a 100% alternate. You can see that this also terminates in our KEY window of potential resistance.

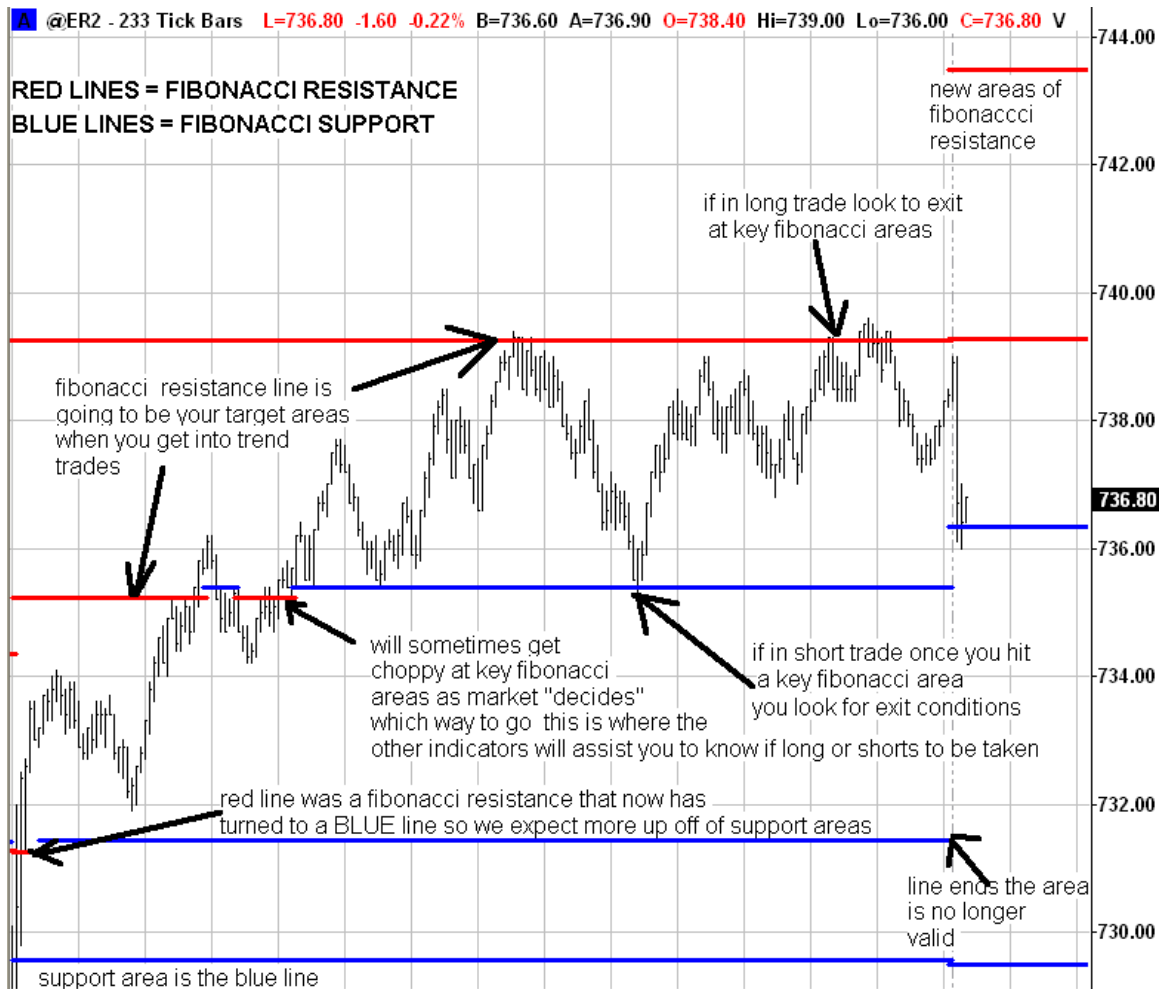


We now have 8 fibonacci projections and retracements that fall within a tight clearly defined area. If you were trading the market long, you would look to exit your position in this window. If you are a counter trend trader or swing trader you would look to initiate a short position in this window.

That is how you use fibonacci ratios to predict potential turning points in the market. This becomes even more powerful if you have a confluence of ratios using a 1, 3, 15, 30 minute chart that all fall into the same window.

The T-3 Fibs ProTrader software will automatically do a full 10 timeframes of fibonacci work for you from every possible swing and then automatically and precisely each day show you very simply where the best of the best areas are so you can focus on your trading. The consistency and accuracy of the software cannot be matched and this foundation of where the market should turn coupled with the additional indicators we have that tell you WHEN it is going to turn is an unbeatable combination.

Here is an example chart of the KEY fibonacci areas as defined by the software. You can see how simple and effective they are at calling turning points. Once you add to that all of the additional T-3 Methods then you will be able to read the market like a book and be able to analyze any chart with 100% confidence no matter what market or timeframe you trade.

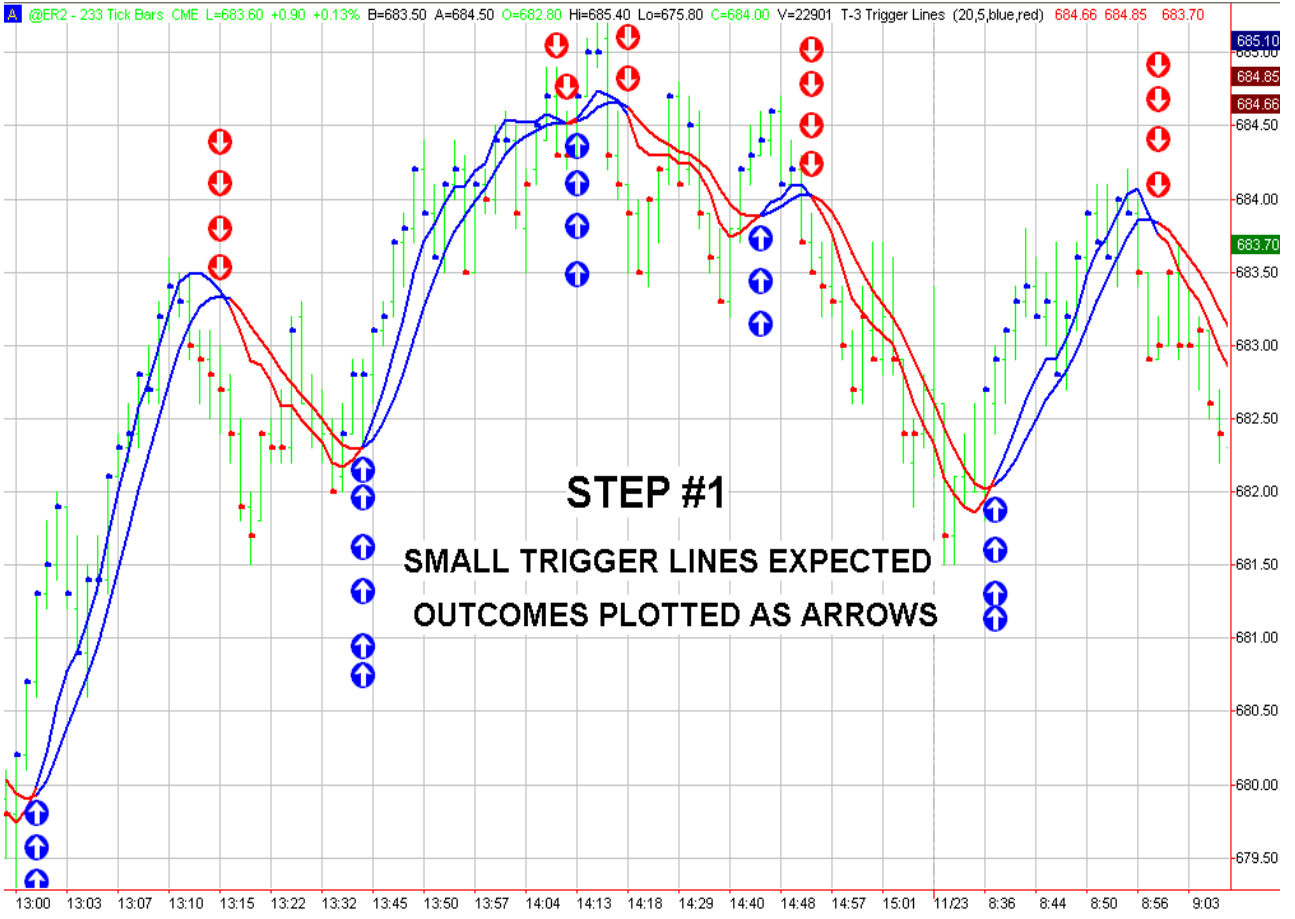


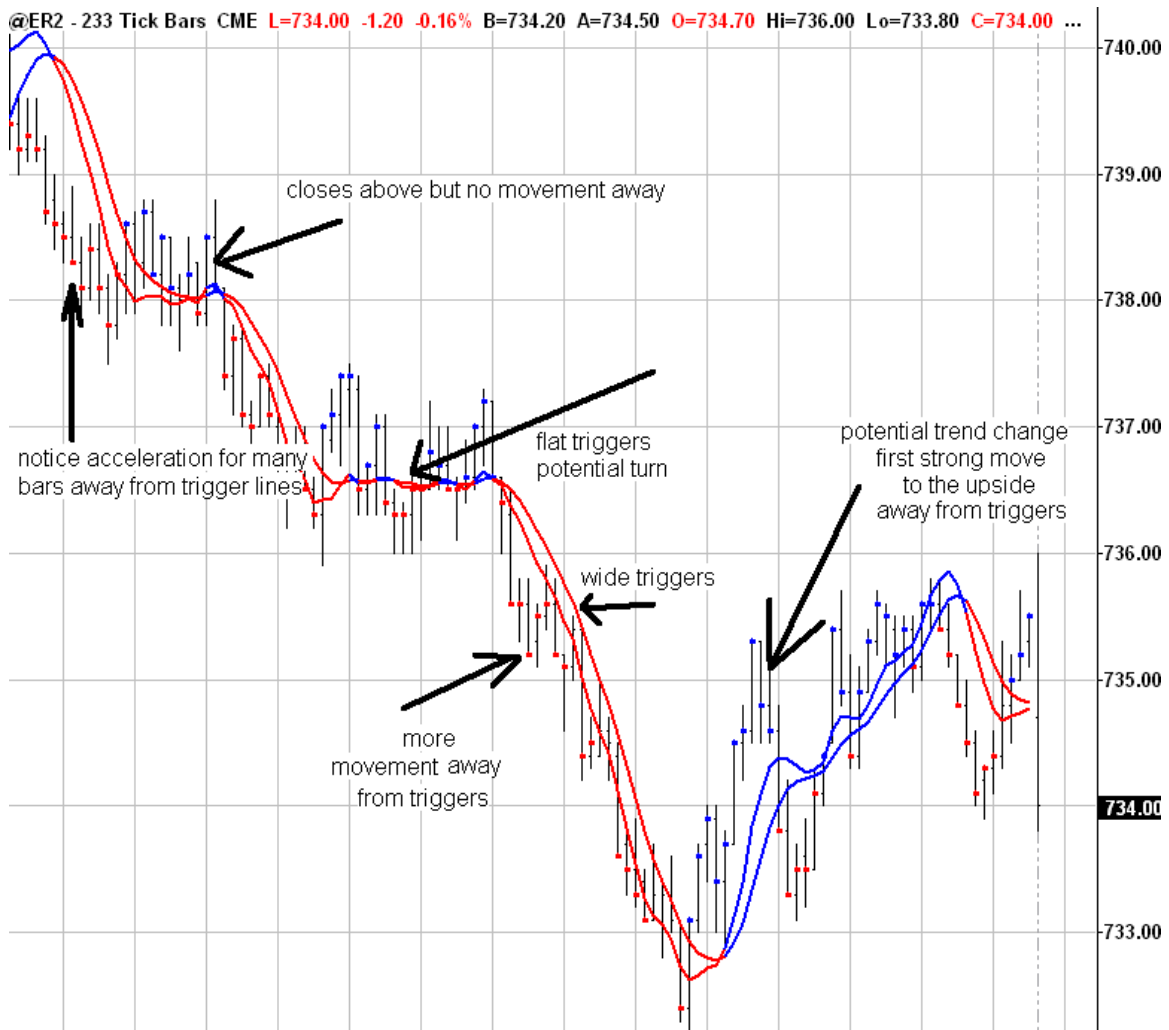
# STEP BY STEP TRAINING FOR NEXGEN T-3 USERS

## STEP #1 BASICS

### Small Trigger Lines

- The basic premise is the same as the large triggers; but the smaller triggers represent a smaller more fine tuned frame than the larger.
- They give an enormous advantage over the market, not only for the direction but when the markets going to turn **and** the strength of the actual market.
  - The first expectancy is when you are **below** the trigger lines and they cross to the downside in **red** expect to trend **down**.  
When you are above the trigger lines and they cross to the upside in **blue** expect to trend **up**. **Above up, below down.**
  - When the trigger lines are **spread out** very wide it means they are moving with strength. This shows there is a lot of momentum in the market to go up or down.
  - Also when price bars do not **TOUCH** the triggers with the trend this also shows a lot of momentum.
  - When they start to **rollover** it is a good indicator that the market is going to trend down or up.
  - Once you start to close on the opposite side of the trigger lines you can expect them to start to turn





NOTES :

---



---



---



---

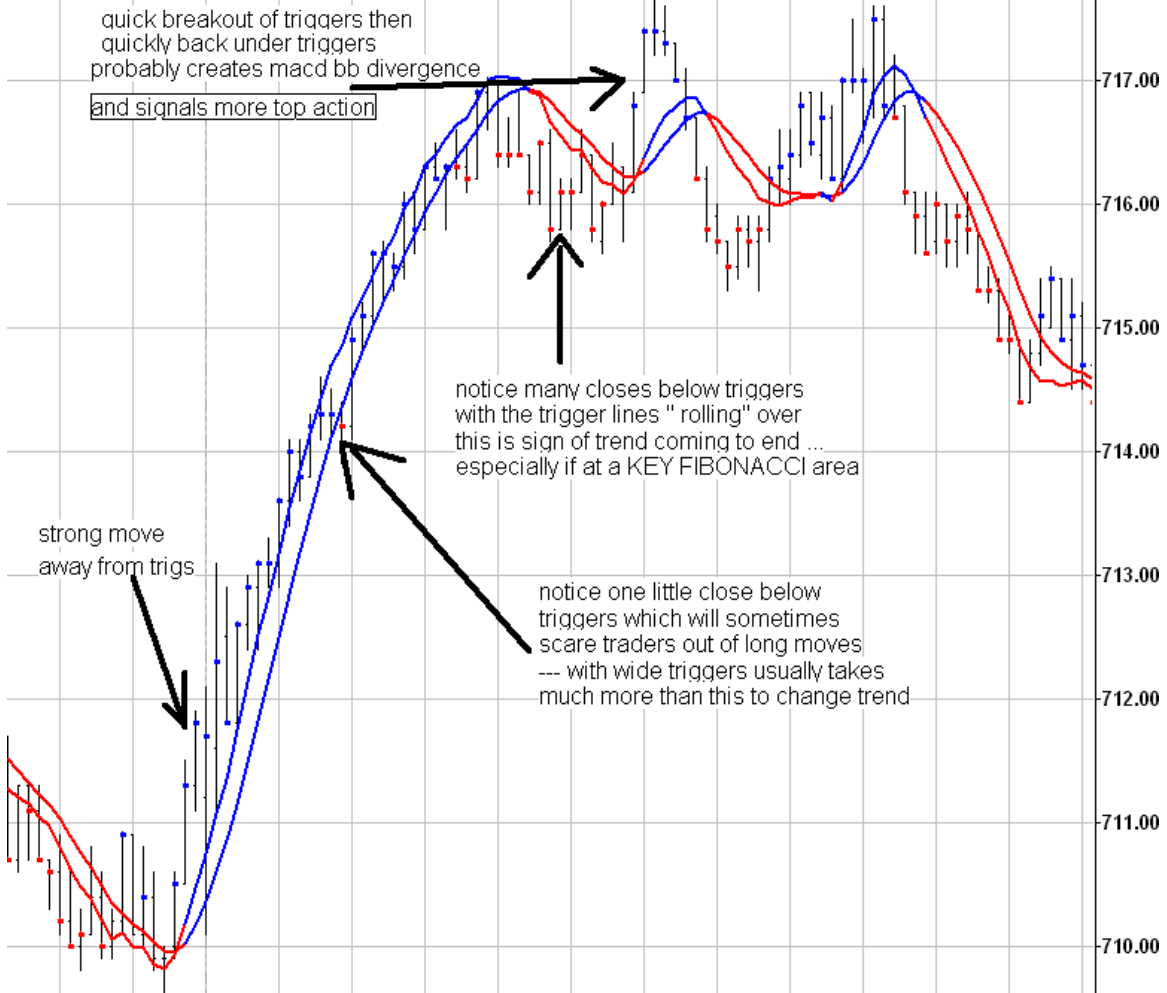


---



---

@ER2 - 233 Tick Bars CME L=734.50 -0.70 -0.10% B=734.20 A=734.80 O=734.70 Hi=736.00 Lo=733.80 C=734.50 ...



NOTES :

---

---

---

---

---

---

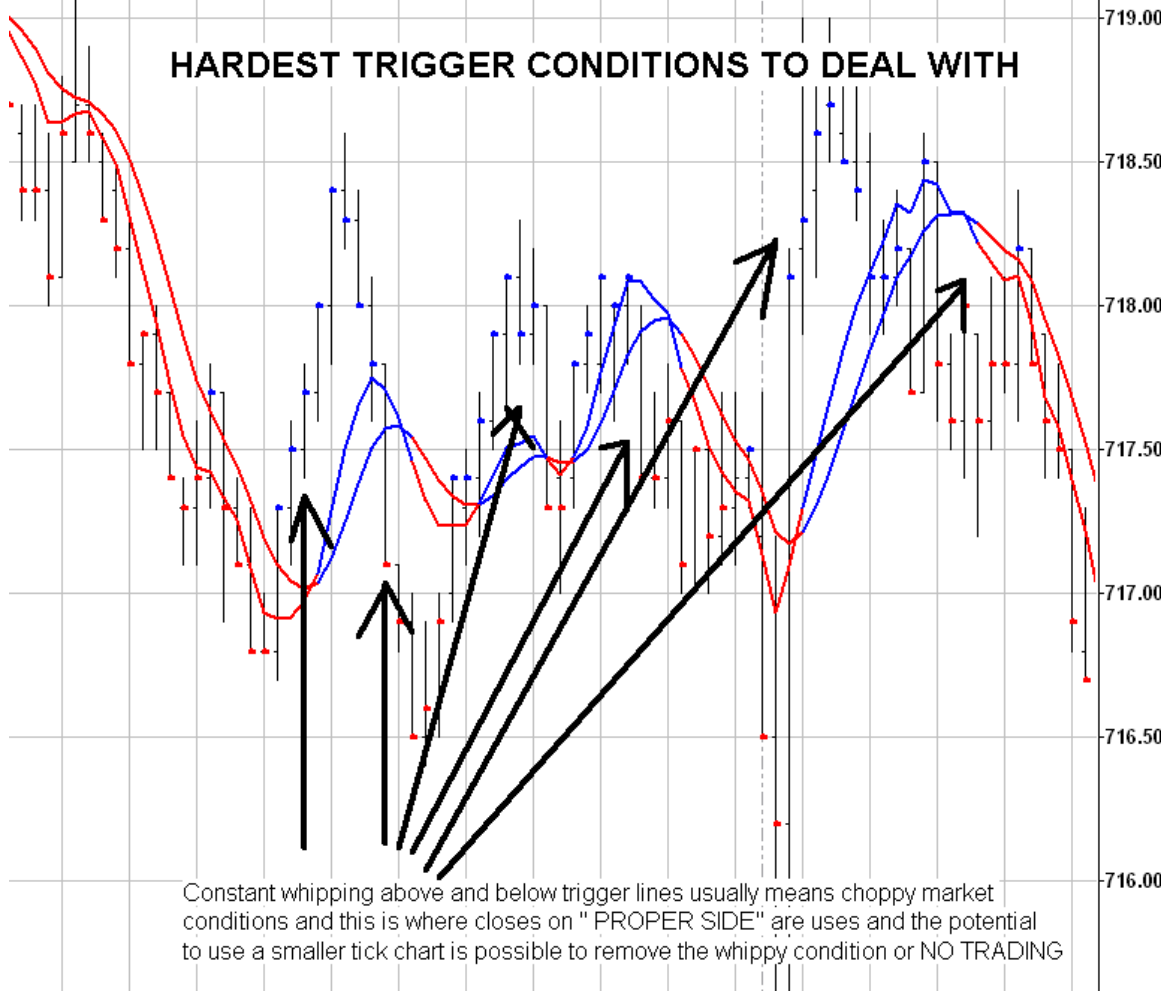
---

---



@ER2 - 233 Tick Bars CME L=734.50 -0.70 -0.10% B=734.20 A=734.80 O=734.70 Hi=736.00 Lo=733.80 C=734.50 ...

### HARDEST TRIGGER CONDITIONS TO DEAL WITH



Constant whipping above and below trigger lines usually means choppy market conditions and this is where closes on "PROPER SIDE" are uses and the potential to use a smaller tick chart is possible to remove the whippy condition or NO TRADING

NOTES :

---

---

---

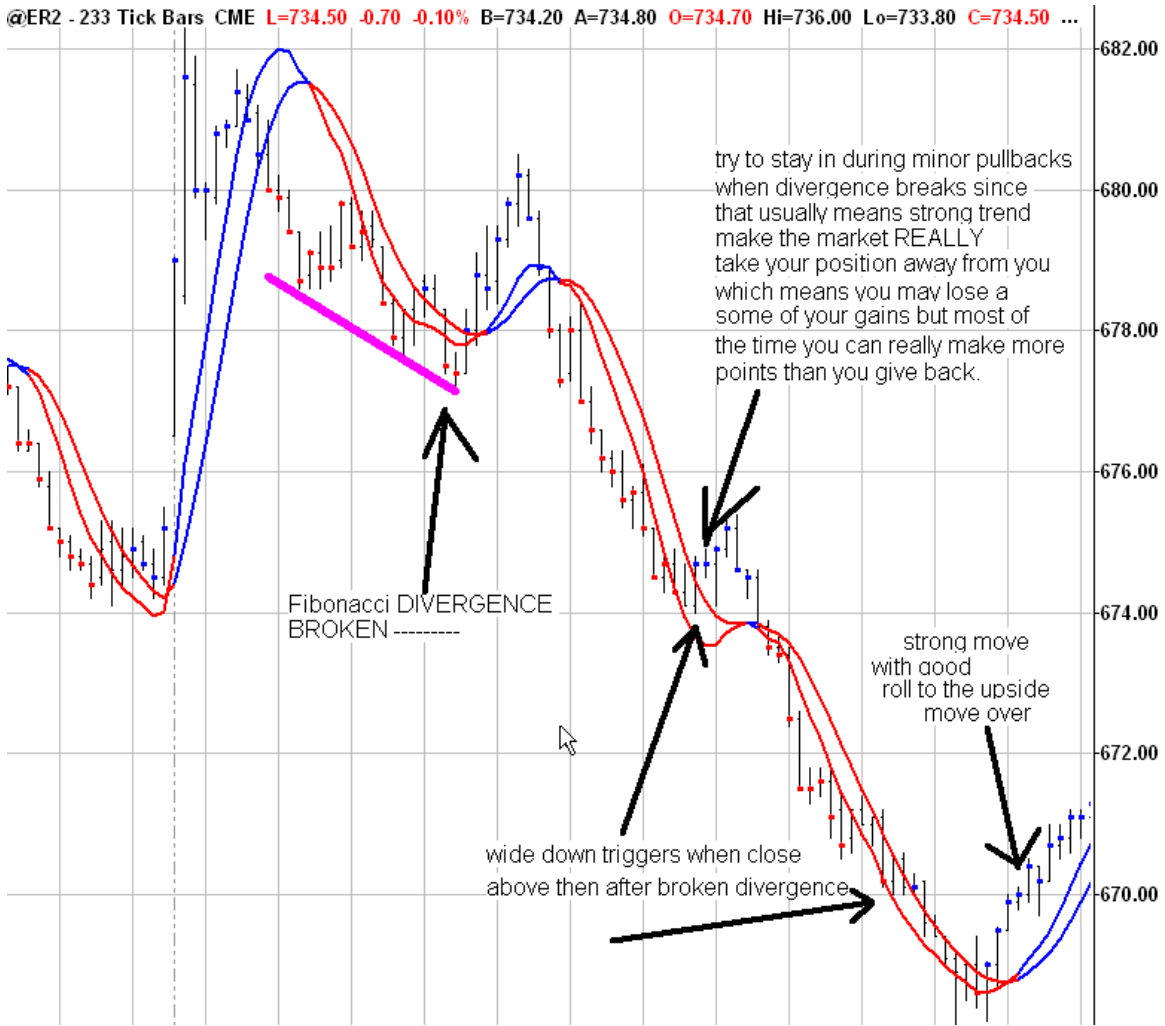
---

---

---

---

---



NOTES :

---



---



---



---



---



---

## Large Trigger Lines

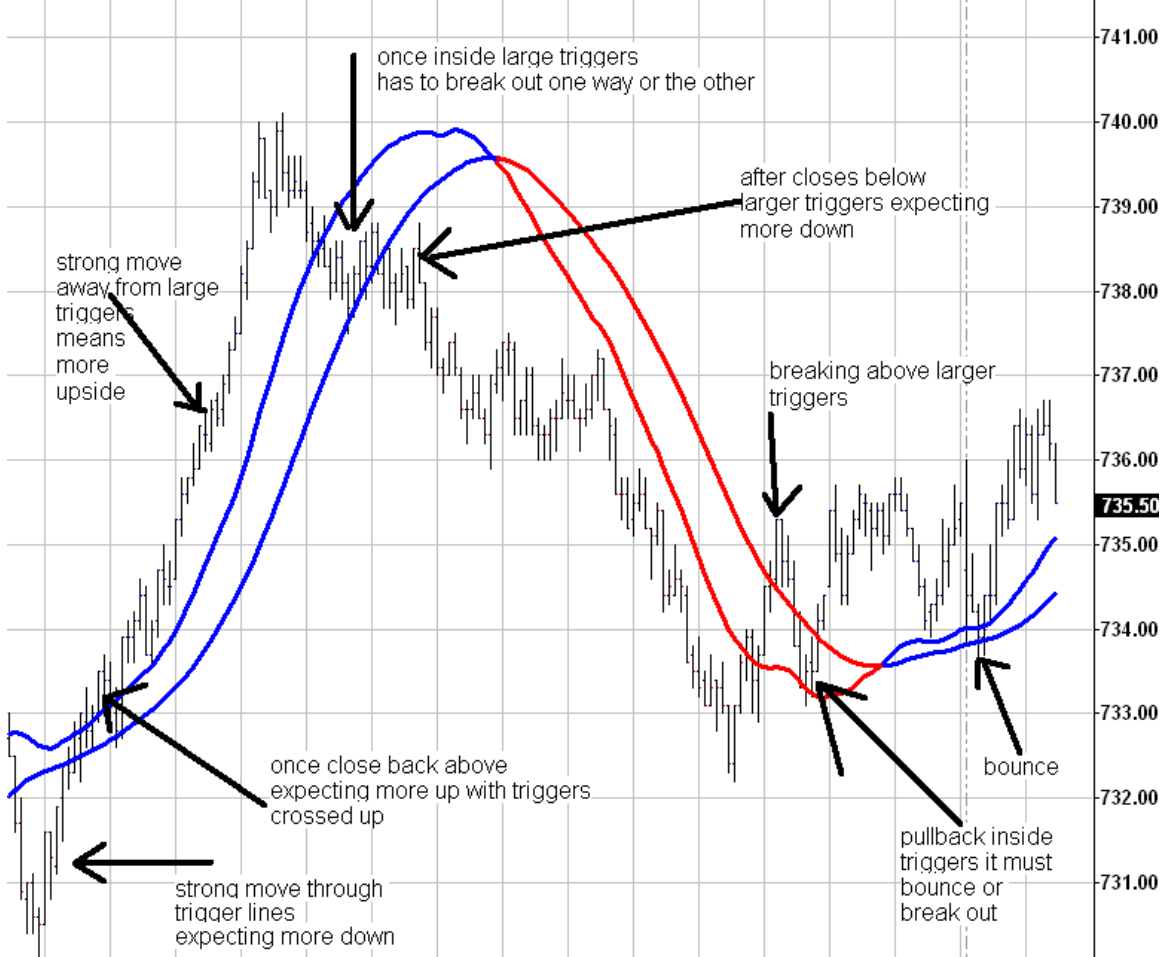
- What we are going to look at is a couple examples of the Large Trigger Lines:

- The first expectancy is if you are **above** the big trigger lines there is more of a bias to the upside.
- If you are **below** the big trigger lines there is more of a bias to the downside.
- So, if you are on the right side of the triggers for going up and below them for going down, we are looking for more continuation for the direction for the trigger lines.

What the trigger lines are telling you is very important.

THE LARGER LINES GIVE YOU LONGER TERM TREND DIRECTION

@ER2 - 233 Tick Bars L=735.50 +0.30 +0.04% B=735.50 A=735.60 O=734.70 Hi=736.60 Lo=733.40 C=735.50 V...



NOTES :

---

---

---

---

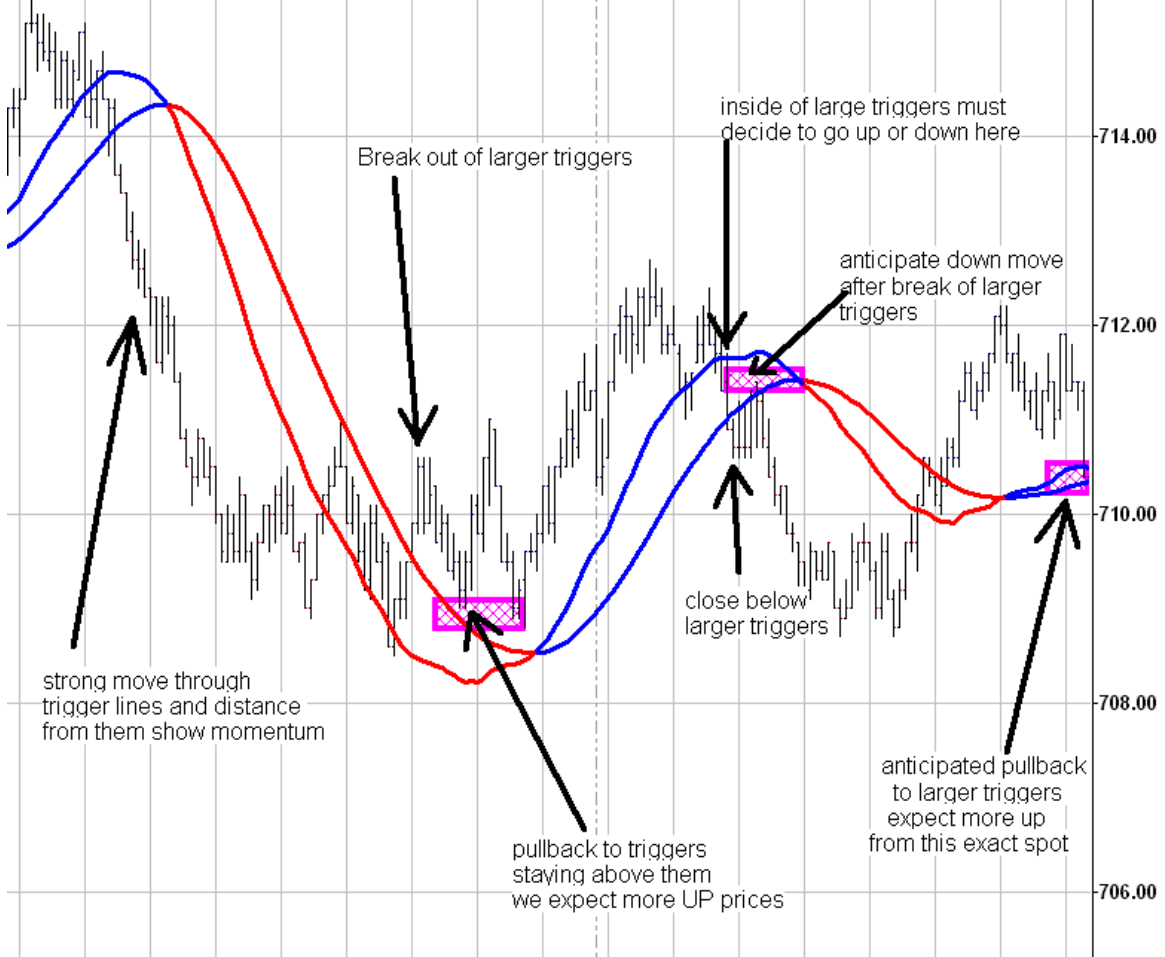
---

---

---

---

@ER2 - 233 Tick Bars L=735.30 +0.10 +0.01% B=735.30 A=735.40 O=734.70 Hi=736.60 Lo=733.40 C=735.30 V...



NOTES :

---

---

---

---

---

---

---

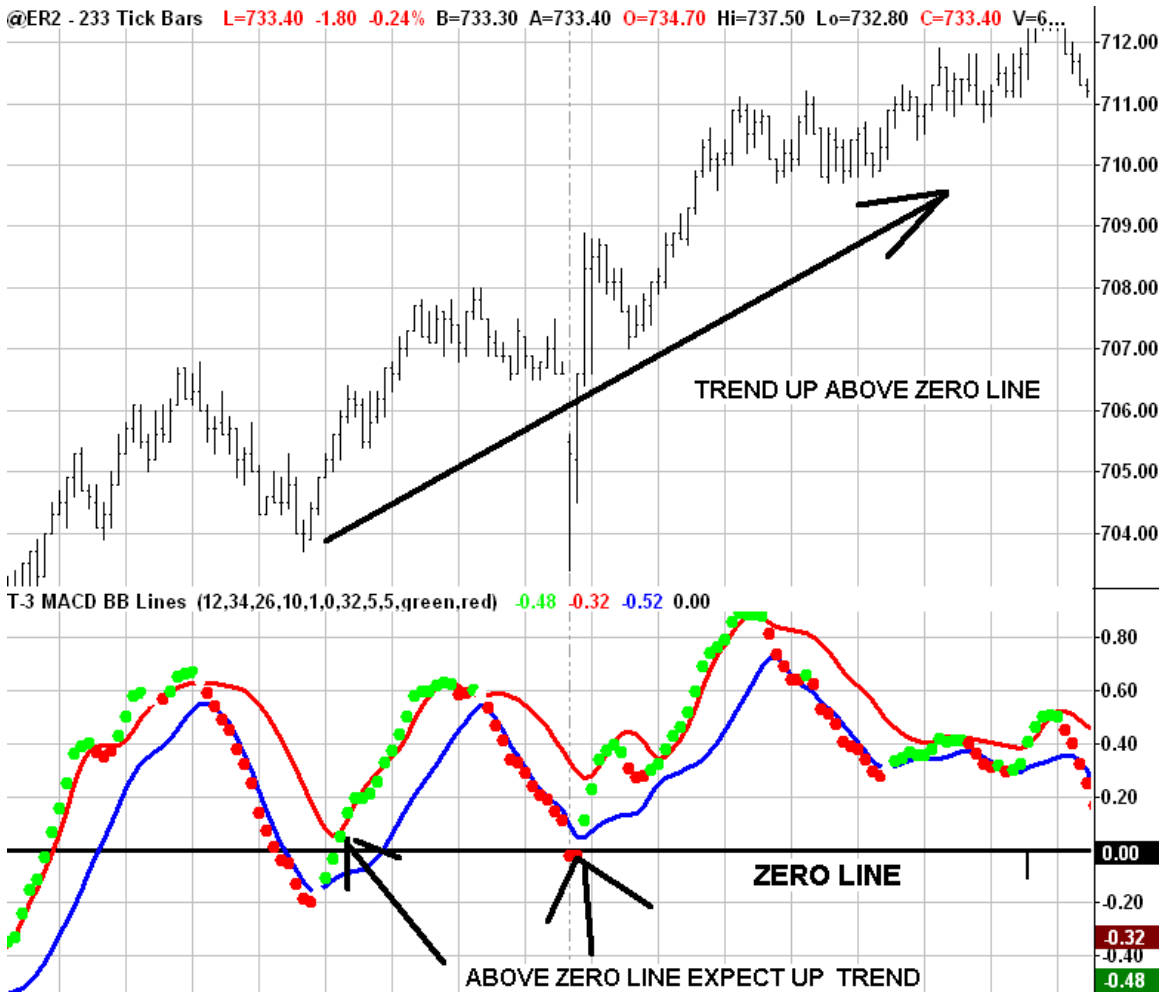
---

## **STEP #2 BASICS**

### **Macd BB Lines:**

- The green and red dots are Macd calculations- Colored to show you the short-term trend up or down
- Red and blue lines are bollinger bands of, or a standard deviation of a Macd.
  
- Bollinger Band basic Theory:
  - If you break the upper band then you have some momentum to the upside and you are probably going to keep going up and look for continued action to the upside. (THIS IS WHERE BLUE MACD BB DOTS PLOT ON CHART)
  - If the (green dots stay OUTSIDE and ABOVE the upper bands then you have a strong move up.
  - If you break the lower band then you got some momentum to the downside and you are probably going to keep going down and going to get continued action to the downside. (THIS IS WHERE RED MACD BB DOTS PLOT ON CHART)
  - If the (red dots) stay OUTSIDE and BELOW the lower bands then you have a strong move down.
  
- The further apart they spread out that is a strength indicator to the up or the downside and expected continuation of the trend is what to look for.
  - Another expectancy is when you break above the zero line (middle white line) and then you pull back to the zero line and you start to put in turn.
  - You are expected to continue in the longer-term trend. This is called the zero rejection line. (Trend Trade Setup)

We also use this indicator to plot divergences of price and the MACD BB LINES which will also give you an advanced warning on if an KEY support or resistance area is going to hold which we don't have to do now but you will see it many times over and over in the room.



NOTES :

---



---



---



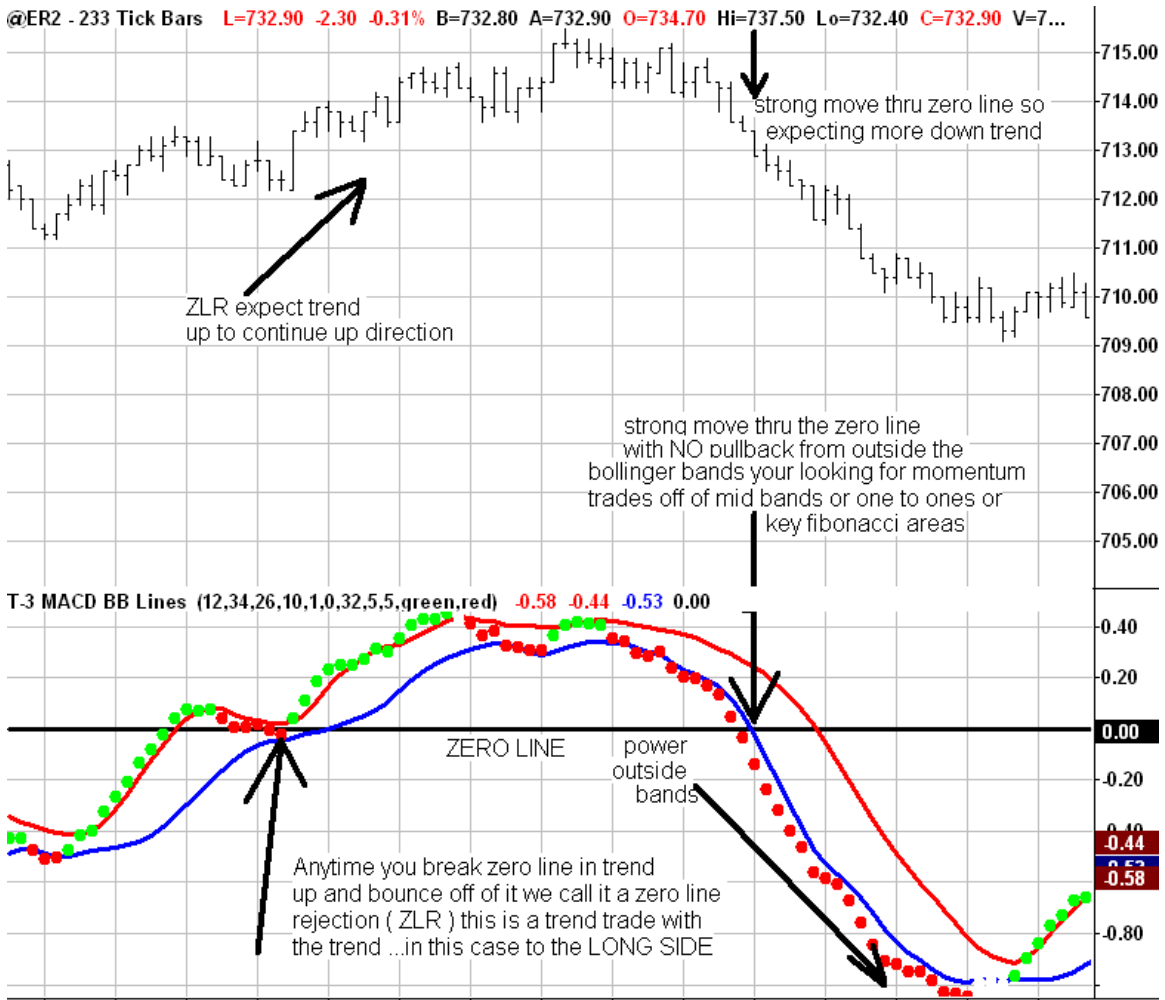
---



---



---



NOTES :

---



---



---



---



---



---



## MACD BB DIVERGENCE :

This indicator is used to determine if there is a discrepancy between price and the MACD BB LINES indicator. (USED in counter trend trades)

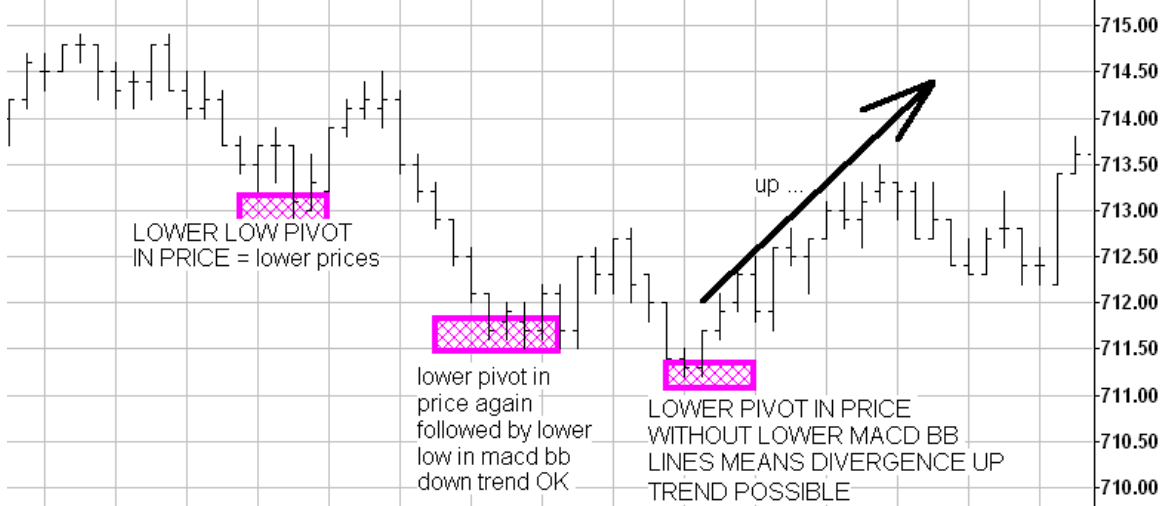
The KEY PIVOTS of minimum 2 bars is used as a comparison of the “peaks” to see if there is divergence or not.

**YOU MUST BE ABLE TO RECOGNIZE the POTENTIAL FOR DIVERGENCE BEFORE IT HAPPENS! (See video on this)**

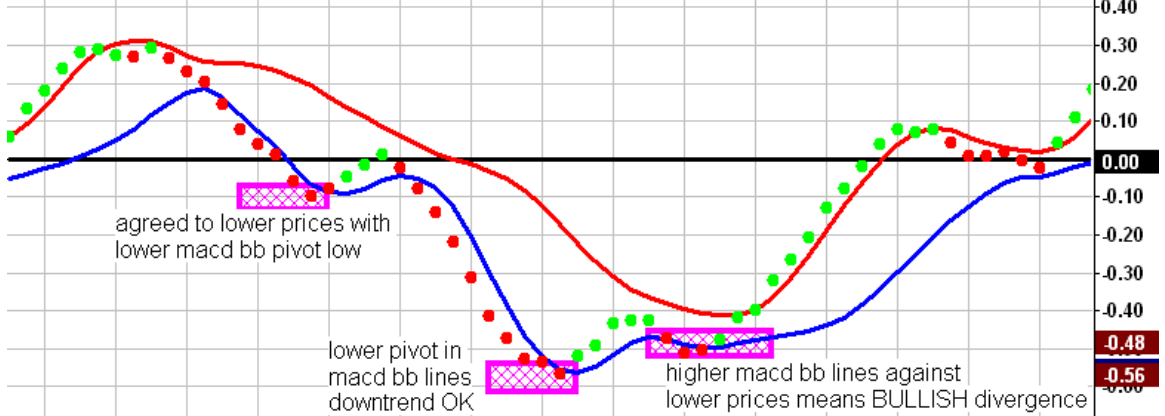
### 5 BASICS OF DIVERGENCE – TREND and MACD BB LINES & expected outcomes of each of the setups

1. **Higher Prices** and **Lower Macd BB lines** = EXPECTED REVERSAL TO DOWN SIDE - or Bearish Divergence- RESISTANCE SHOULD HOLD.
2. **HIGHER PRICES** and **HIGHER MACD BB LINES** = TRENDING UP --  
- no reversal expected – RESISTANCE MAY BREAK.
3. **Lower Prices** and **Higher Macd BB lines** = EXPECTED REVERSAL TO UPSIDE... or Bullish Divergence-SUPPORT SHOULD HOLD
4. **Lower prices** and **lower trending down Macd BB lines** =  
TRENDING DOWN -- no reversal expected – SUPPORT MAY BREAK
5. If Divergence tops or bottoms break- meaning price action beyond the high or low that created divergence then trend usually will continue very strong.

@ER2 - 233 Tick Bars L=732.90 -2.30 -0.31% B=732.80 A=732.90 O=734.70 Hi=737.50 Lo=732.40 C=732.90 V=7...



T-3 MACD BB Lines (12,34,26,10,1,0,32,5,5,green,red) -0.56 -0.48 -0.55 0.00



NOTES :

---



---



---



---



---



---

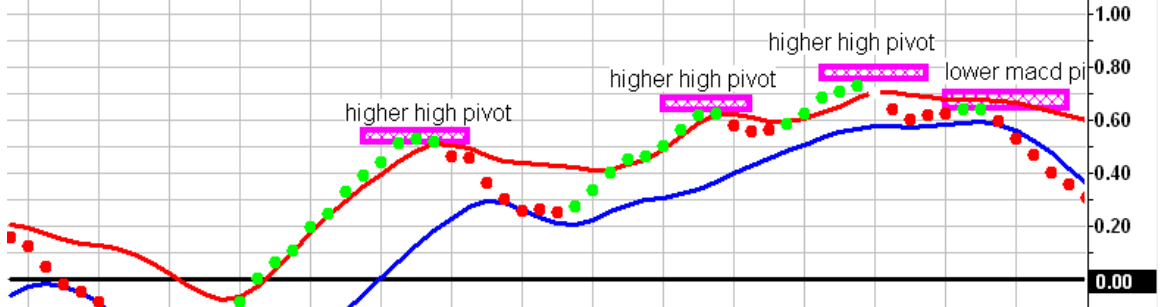


---

@ER2 - 233 Tick Bars L=732.90 -2.30 -0.31% B=732.80 A=732.90 O=734.70 Hi=737.50 Lo=732.40 C=732.90 V=7...



T-3 MACD BB Lines (12,34,26,10,1,0,32,5,5,green,red) -0.44 -0.43 -0.54 0.00



NOTES :

---

---

---

---

---

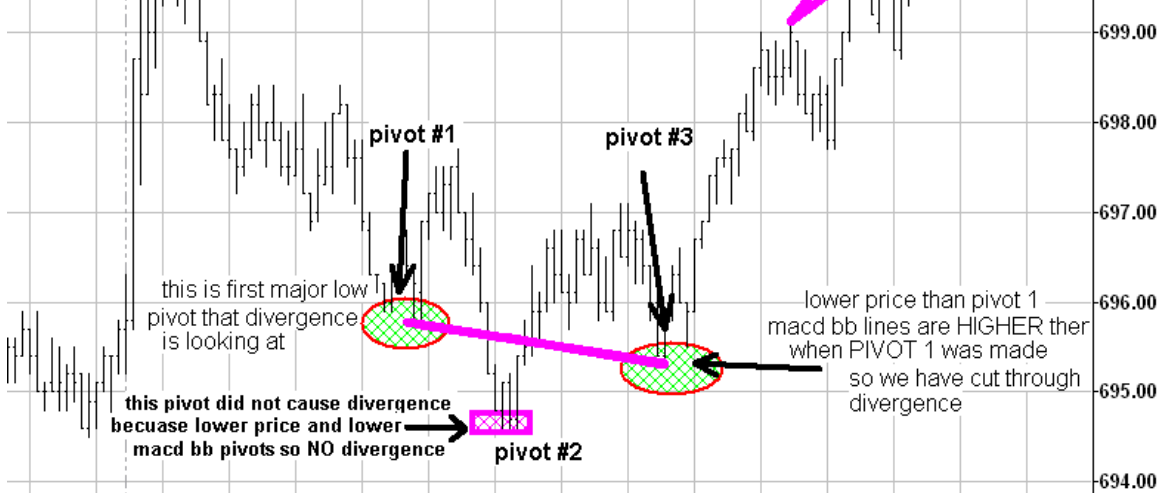
---

---

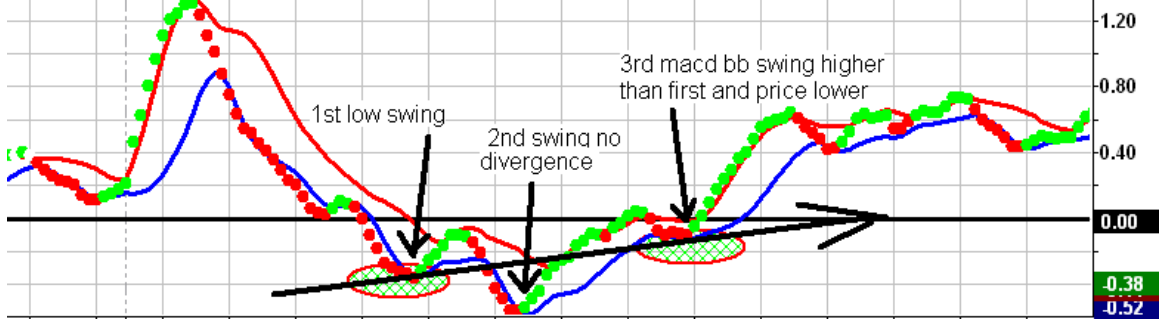
---

@ER2 - 233 Tick Bars L=730.00 -3.20 -0.44% B=729.90 A=730.00 O=733.20 Hi=733.70 Lo=728.80 C=730.00 V=2...

### Cut-Through Divergence



T-3 MACD BB Lines (12,34,26,10,1,0,32,5,5,green,red) -0.38 -0.41 -0.52 0.00



NOTES :

---



---



---



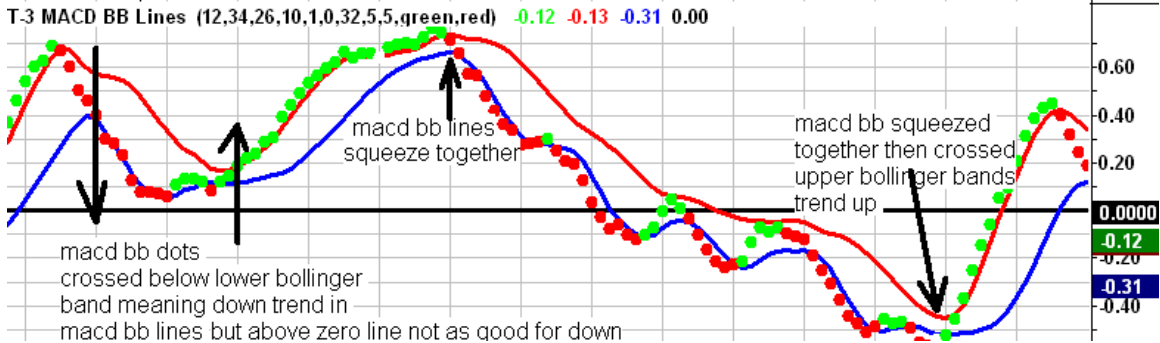
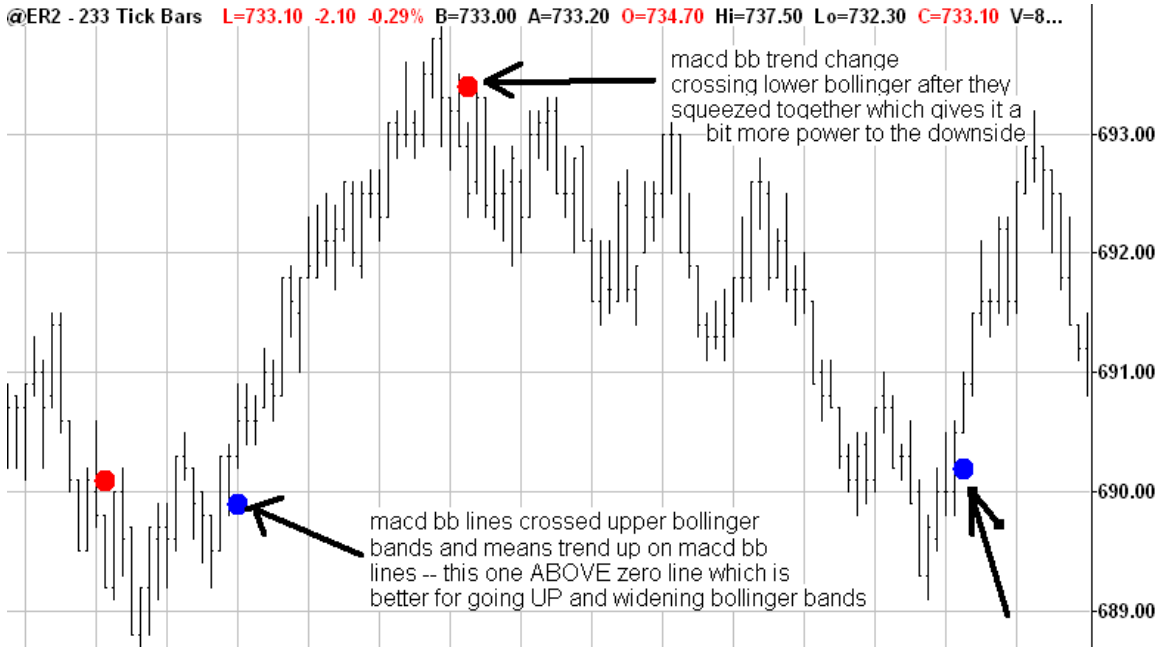
---



---



---



NOTES :

---



---



---



---



---



---

## **STEP # 3 BASICS**

**Support and Resistance:** Auto prep indicator or the t3 fibs accumulator.

This indicator will give you automated multiple timeframe support and resistance plotted as simple red or blue lines.

What the software will do is take a single timeframe and synthetically build up to 10 higher timeframes. Then the software will scan for all the best possible PIVOT points from which to do up to 20 different Fibonacci ratios and types of calculations from. For example it will do all of the extensions from 100% 138.2% 200% 261.8% and so on.... then do the same for retracements...then do the same for alternates then the same for extensions. Once this is done from EVERY pivot from ALL the timeframes – current timeframe and all the synthetically higher timeframes it will then start to sort and filter through the millions of calculations and find for you the absolute highest concentrations of Fibonacci projections and plot them as a red or blue line.

THIS IS THE PART of our software that makes us unique and allows you to know WHEN and WHERE your going to apply the other indicators and lays out a roadmap from which to trade from. Without this knowledge the other indicators will not give you the highest advantages and let you know where to apply them most effectively.

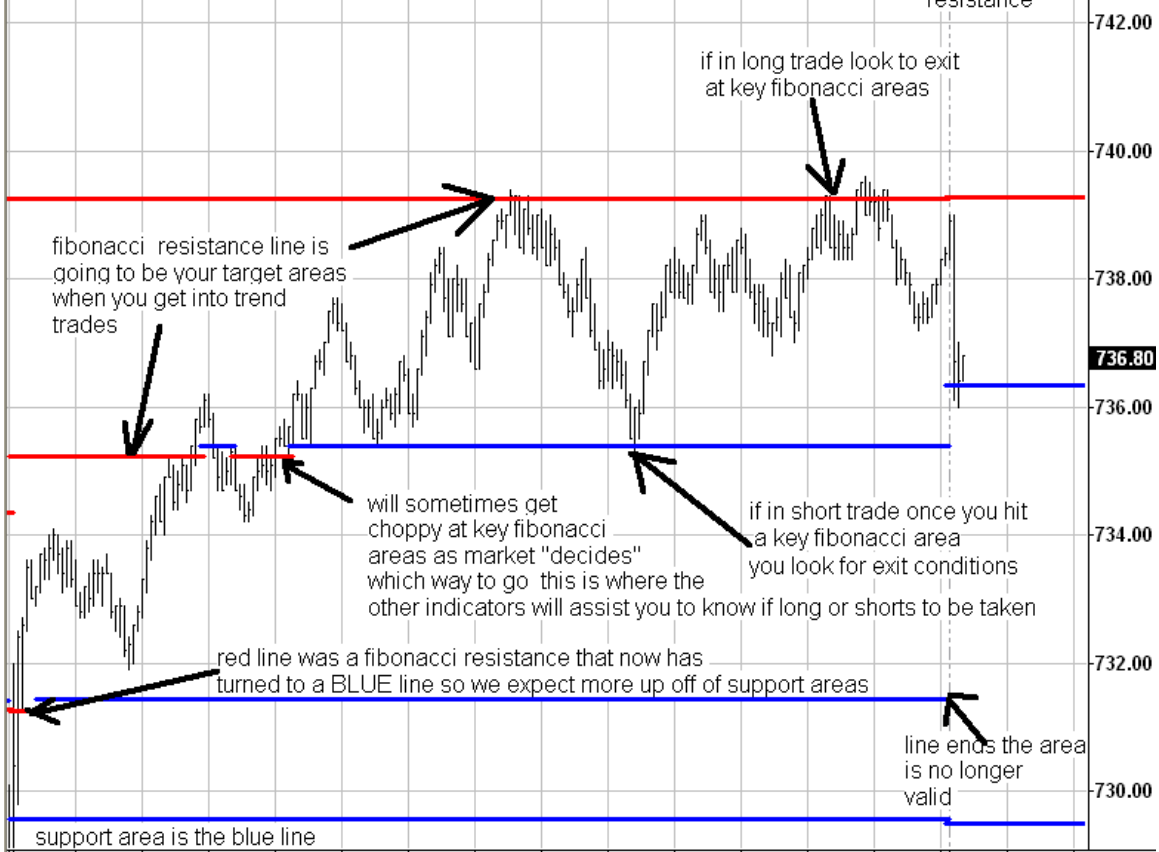
This software also will do this “Fibonacci” analysis 100% consistently every day. And it is with that consistency that you can then start to put together a rigid trading plan around it and although you’re a discretionary trader you can achieve the highest amount of accuracy possible.

It is from the support and resistance we are anticipating the turning points or a break through of an area, which would signal a continuation of the current trend.

**RED LINES WE EXPECT BOUNCE TO THE DOWNSIDE  
BLUE LINES WE EXPECT BOUNCE TO THE UPSIDE**

**A** @ER2 - 233 Tick Bars L=736.80 -1.60 -0.22% B=736.60 A=736.90 O=738.40 Hi=739.00 Lo=736.00 C=736.80 V

**RED LINES = FIBONACCI RESISTANCE**  
**BLUE LINES = FIBONACCI SUPPORT**



NOTES :

---

---

---

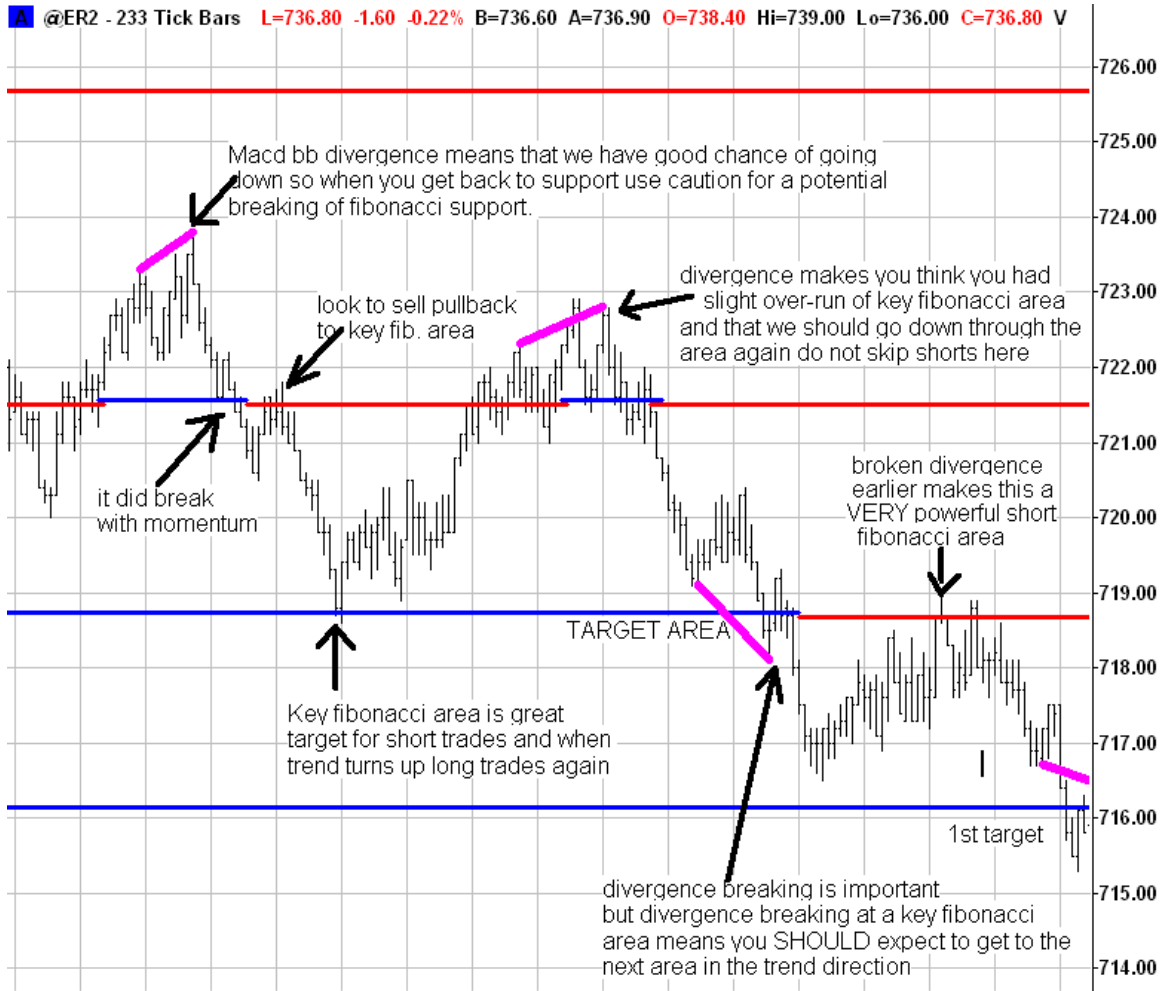
---

---

---

---

---



NOTES :

---



---



---



---

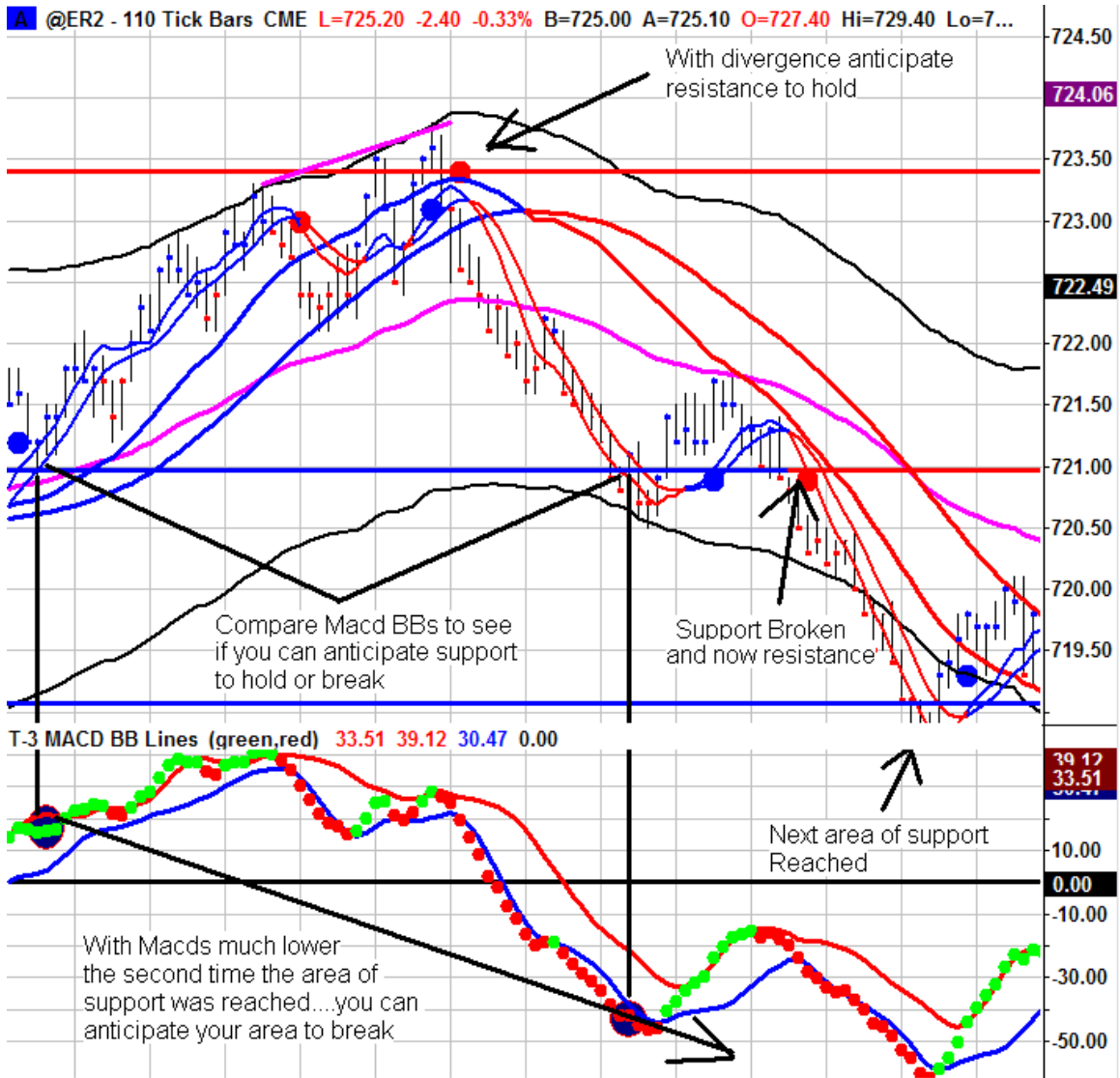


---



---





NOTES :

---



---



---



---



---



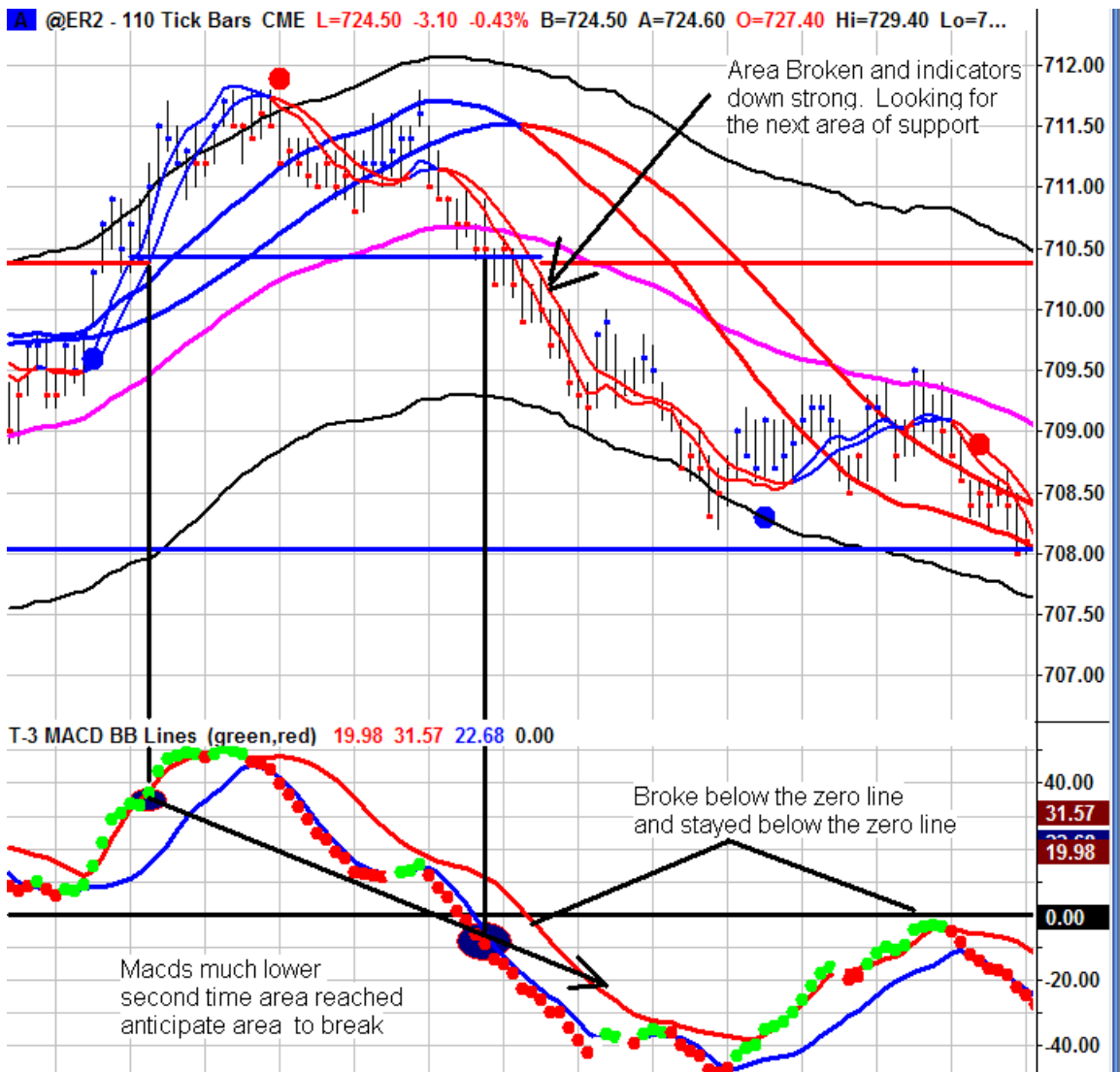
---



---



---



NOTES :

---



---



---



---



---



---

## STEP #4 BASICS

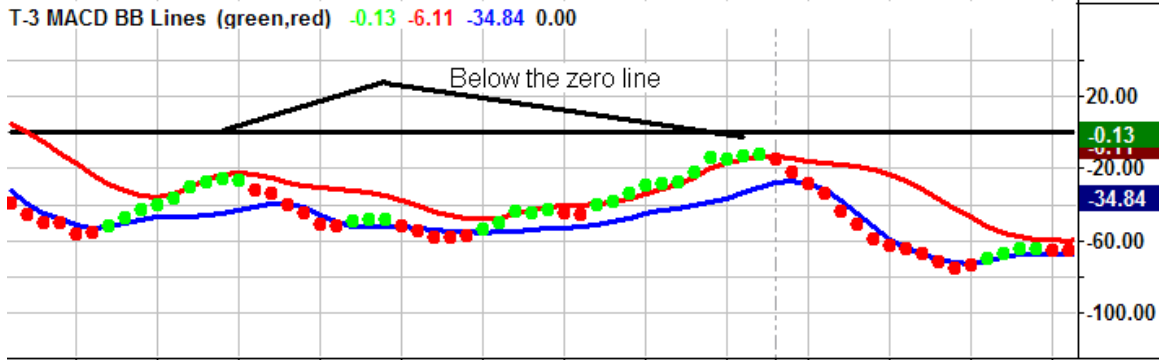
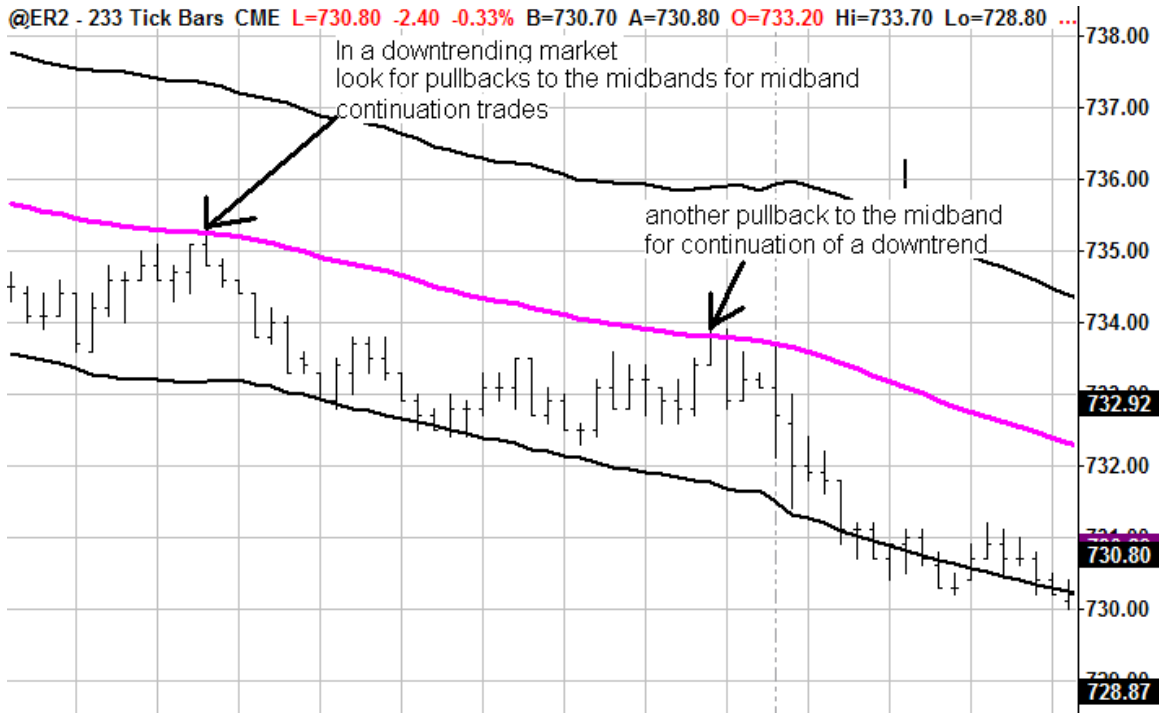
### T3 Trend Bands: AKA Keltner Channel

- We are going to talk to you about expected outcome and there are four:

2. Above the mid bands (magenta line) expect to keep going up. The same is true to the downside; if you are below the mid band you expect to keep going down.

So the first expected outcome is the continuation of the trend on the right side of the trend bands

3. The Second outcome we are looking for is:
  - If we break above the middle bands we anticipate the middle bands are going to hold. So we anticipate they are going to hold on a pullback (Trend Setups)
  - If we break below the mid bands we anticipate the mid bands are going to hold. So we anticipate they are going to hold on a pullback. (Trend Setups)
4. You will find when you get into a very STRONG market the mid bands will provide a very good opportunity for continuation with the trend trades. (Trend Setups)
5. The last outcome is:
  - When you reach the outside of the bands, then you are going to have a strong pullback or at least a strong change. (Potential exit area)



NOTES :

---



---



---



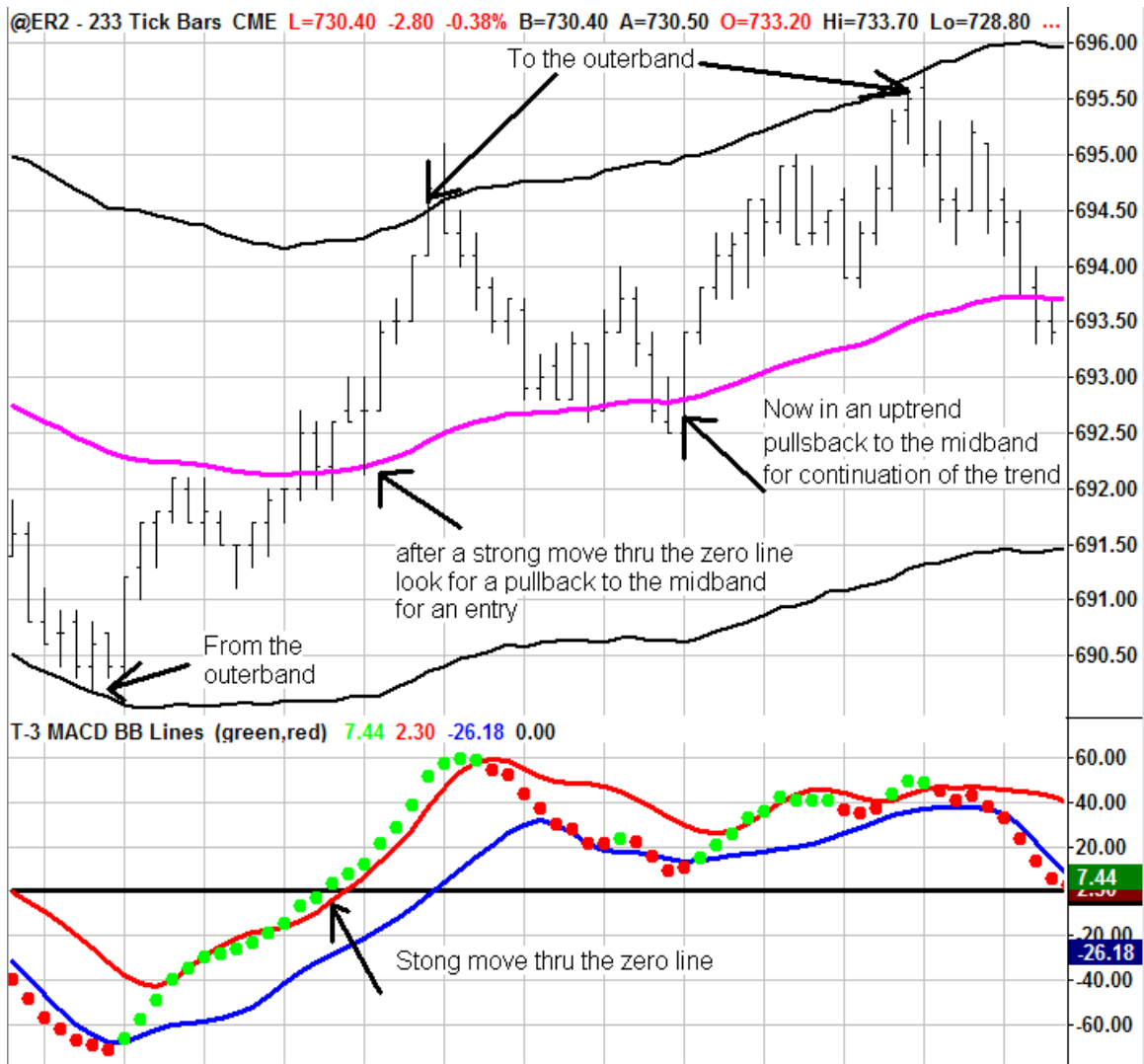
---



---



---



NOTES :

---



---



---



---



---



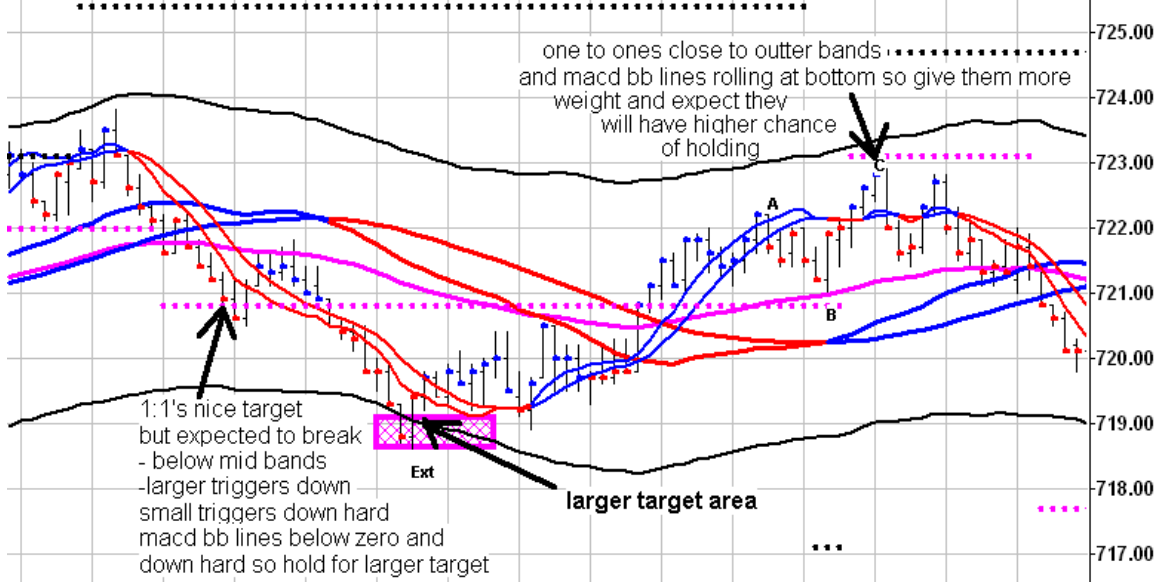
---

## **STEP #5 BASICS**

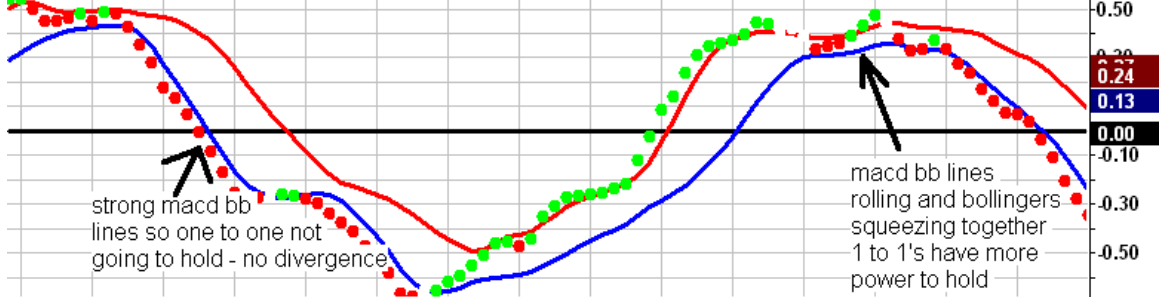
### **T-3 one to ones**

1. The initial outcome is that we expect the one to one to HOLD as support or resistance on a TEMPORARY BASIS depending on what the other indicators are telling us about momentum and trend.
2. The one to one will serve as initial profit targets and FINAL profit targets if they are AT key Fibonacci areas or OUTER bands and momentum is weakening.
3. The one to ones can also be used in a MOMENTUM when they break if the other conditions are true as per the rules.
4. One to ones without any other reasons are to almost be ignored which can prove to be difficult if you do not attach some other criteria with them like strength of the trigger lines and Macd bb lines and or key areas.

@ER2 - 233 Tick Bars L=738.20 +1.50 +0.20% B=738.20 A=738.30 O=730.70 Hi=739.40 Lo=728.40 C=738.20 V...



T.3 MACD BB Lines (12,34,26,10,1,0,32,5,5,green,red) 0.24 0.27 0.13 0.00



NOTES :

---



---



---



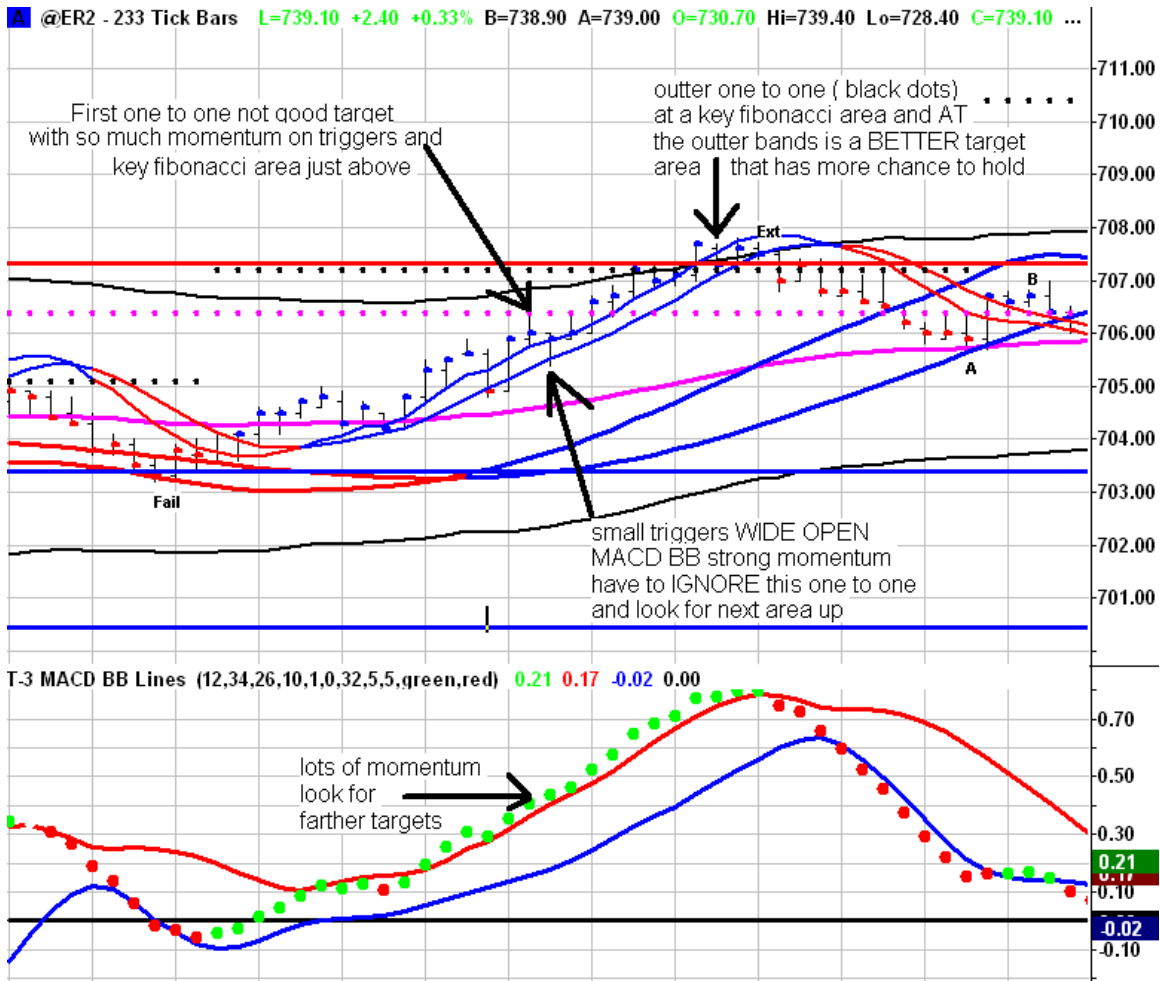
---



---



---



NOTES :

---



---



---



---



---



---



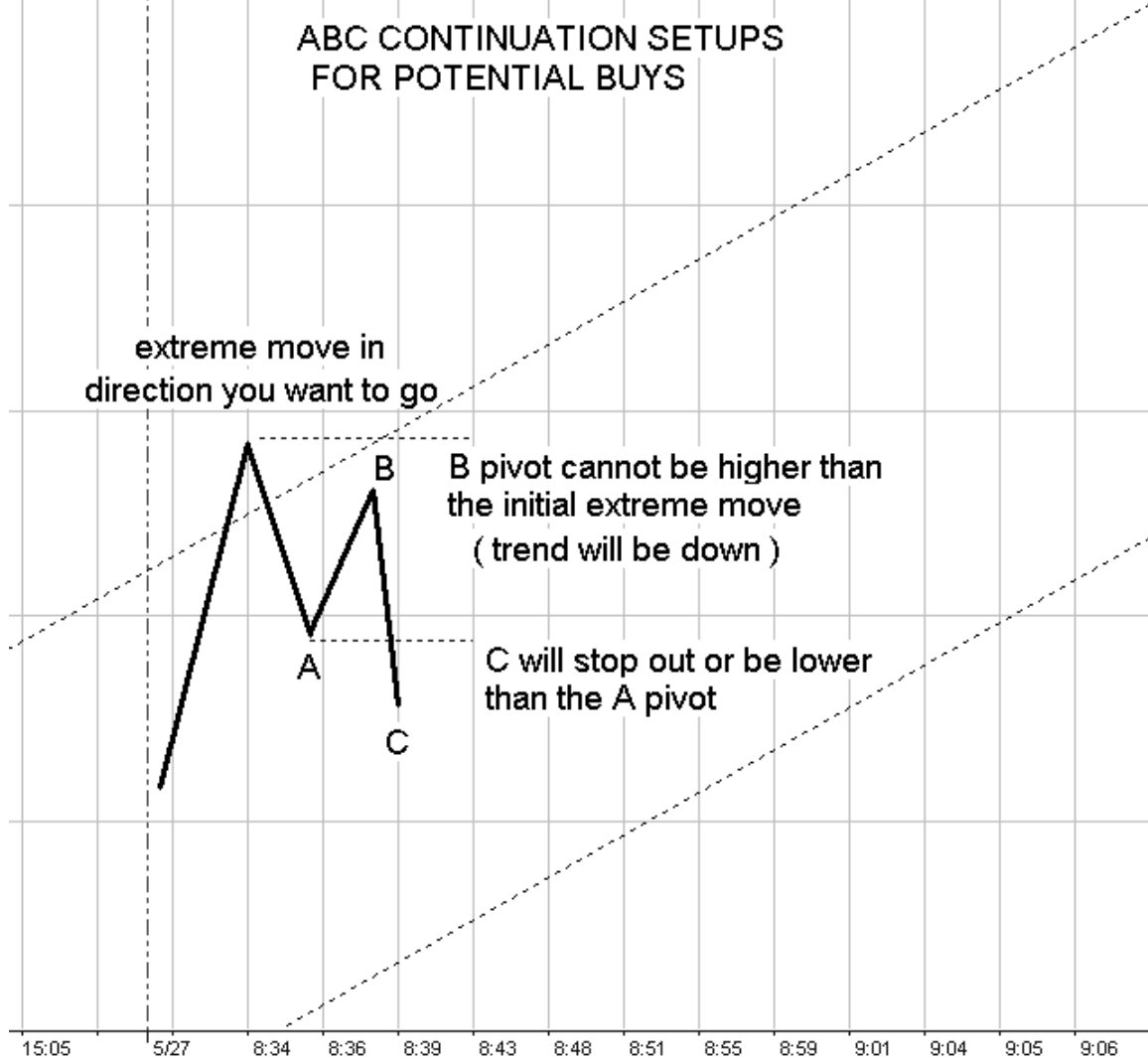
## **STEP #6 BASICS**

### T-3 ABC PLOT TRENDS INDICATOR (ABC's) (TREND TRADE SETUP)

1. ABC's will many times confuse a new person to the software. Which ones to take and which setups to NOT take. Hopefully this will help some.
2. When first getting software started this will be the LAST thing that you will incorporate into your trading plan.
3. The TREND trade, which is MOST OF THE TIME a "B-long or short" or ABC Failure setup with the trend, has several basic rules.
  - a. B trades or ABC FAILURES will be MOST COMMON as they represent a very nice continuation of the trend. THESE are the only ABC TYPE trades you should start off with until your very comfortable with the indicators.
  - b. A-long or short trades (as long as with the trend) can be very profitable...typically A LONGS **after divergence breaks** tend to be the most common in any sustained trend.
  - c. C –counter trend trades when taken AT KEY FIBONACCI areas with DIVERGENCE usually will give you a RUN BACK to the larger trigger lines or MID BANDS on the trend bands at which point you have to watch for a FAILURE if in a STRONG market trend. The B high or low is also a First target area on this type of setup.

Here are the basics of the ABC setups.

@ES.D - 233 Tick Bars CME L=1117.25 +1.25 +0.11% B=1117.00 A=1117.25 O=1119.00 Hi=1124.50 Lo=1116.00 C=1117.25 V



NOTES :

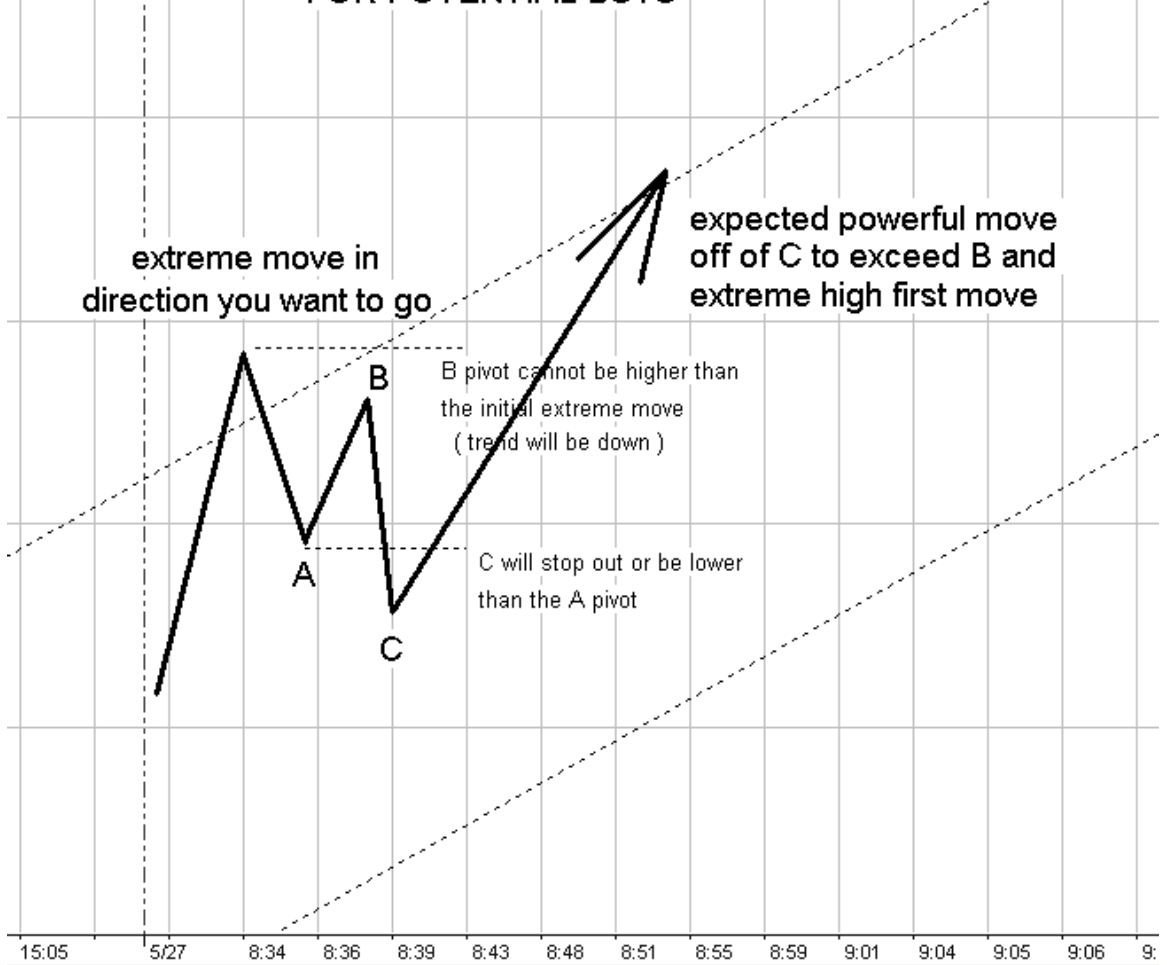
---

---

---

---

### ABC CONTINUATION SETUPS FOR POTENTIAL BUYS



NOTES :

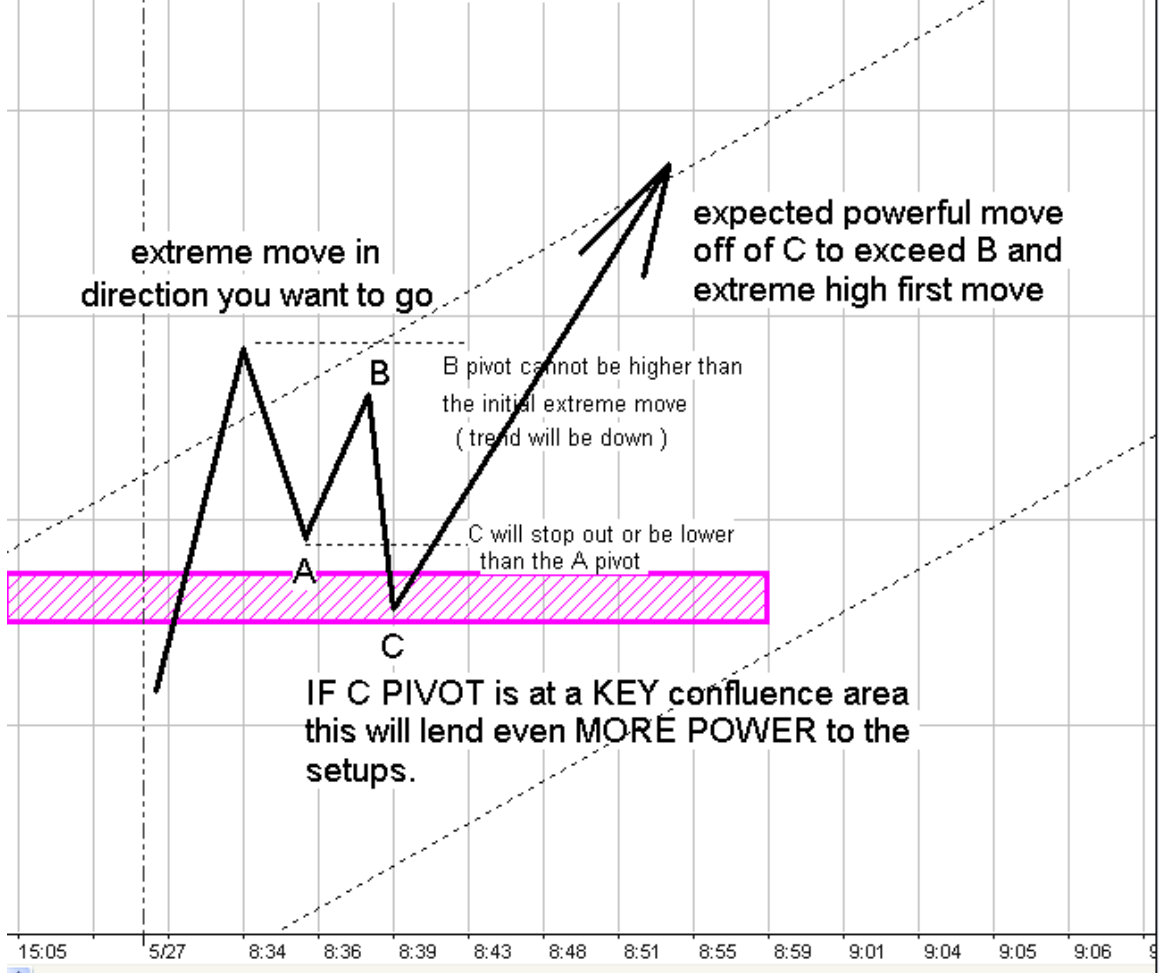
---

---

---

---

### ABC CONTINUATION SETUPS FOR POTENTIAL BUYS



NOTES :

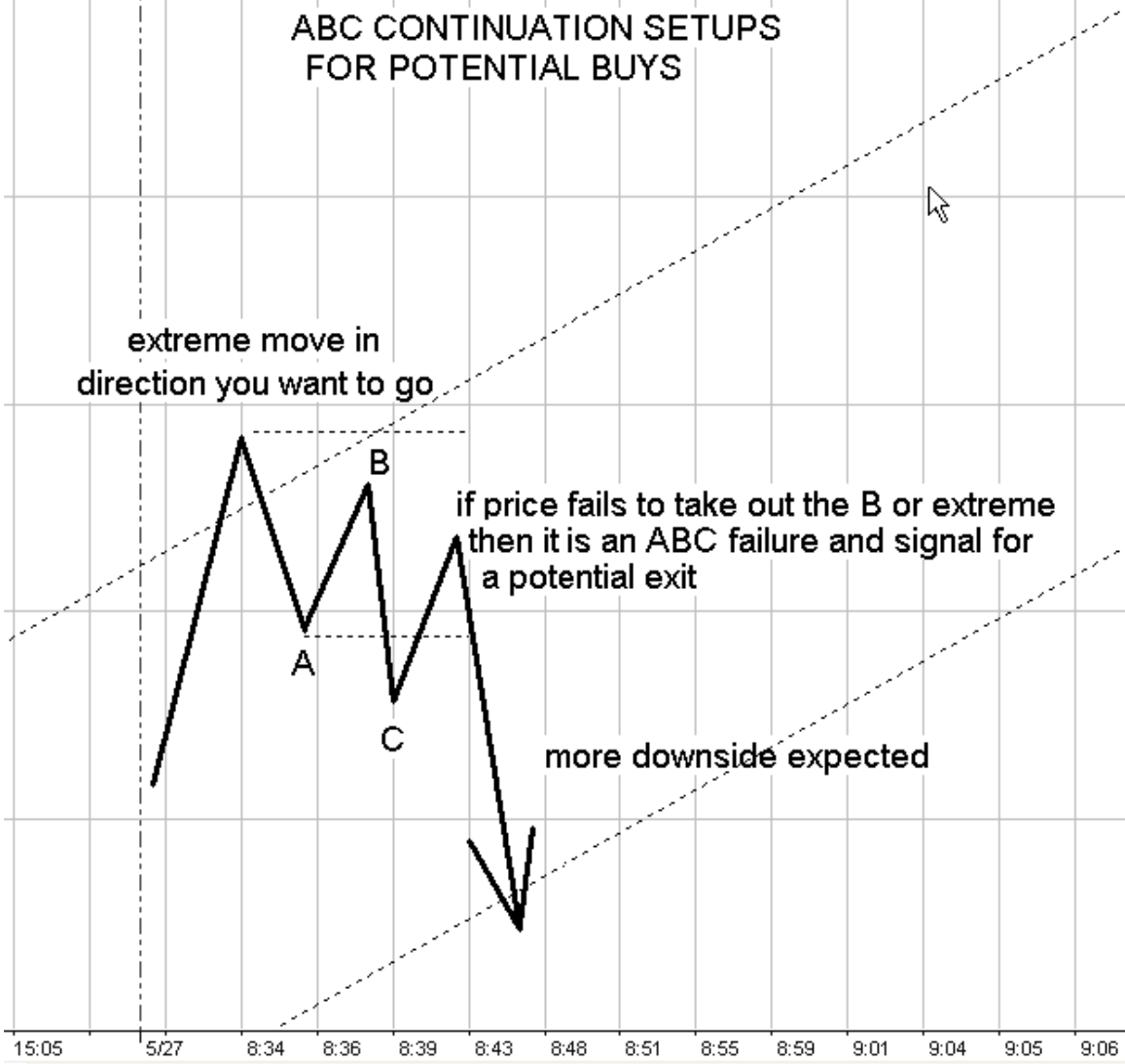
---

---

---

---

### ABC CONTINUATION SETUPS FOR POTENTIAL BUYS



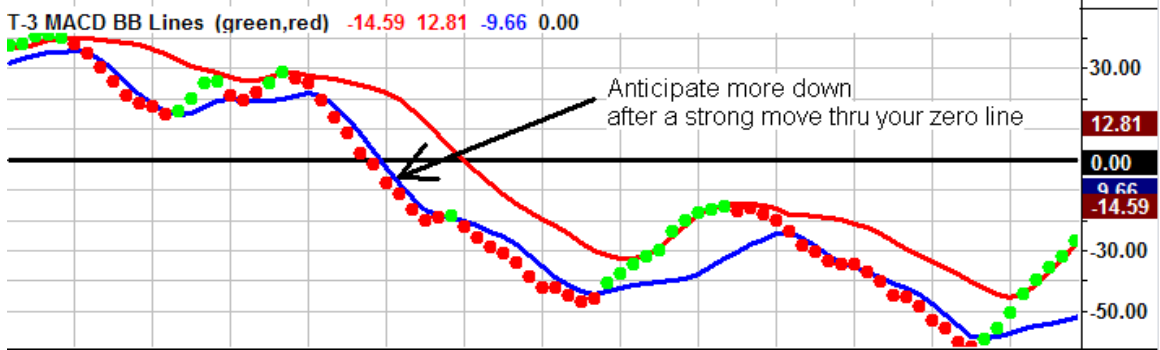
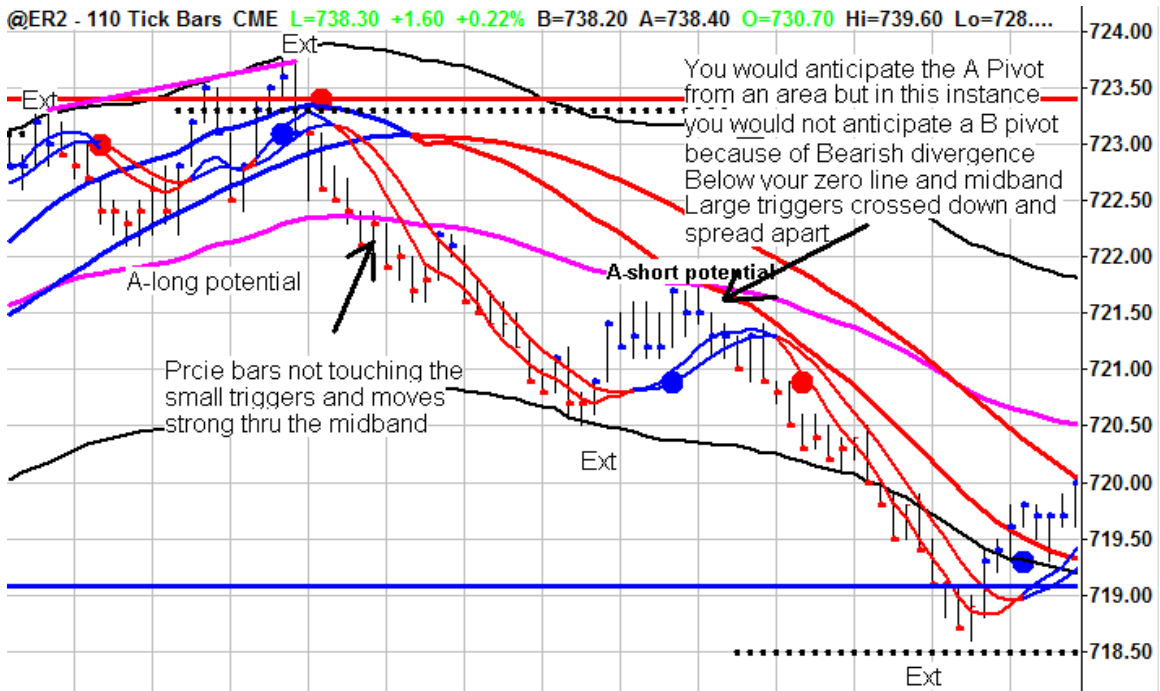
NOTES :

---

---

---

---



NOTES :

---



---



---



---



---



---

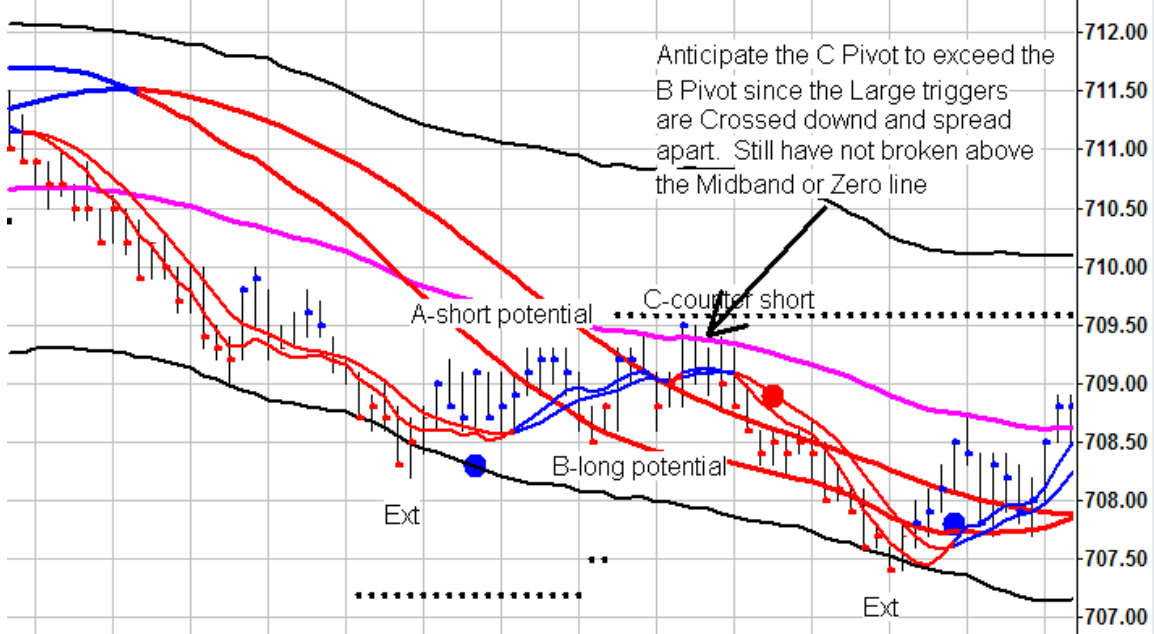


---

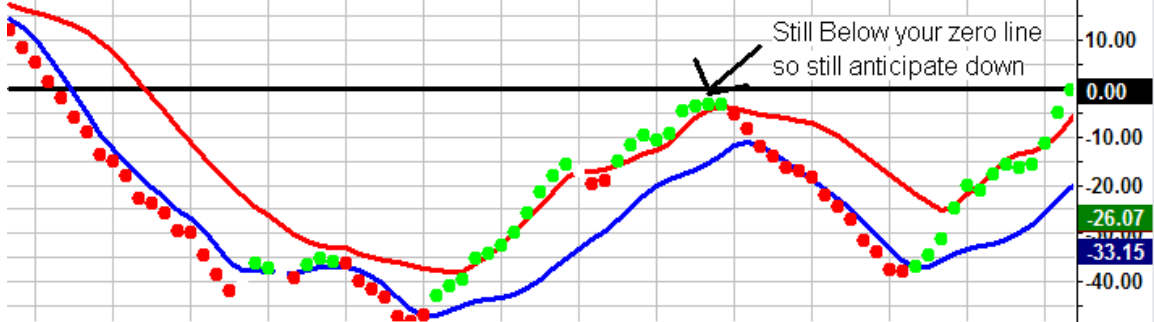


---

@ER2 - 110 Tick Bars CME L=737.90 +1.20 +0.16% B=737.80 A=737.90 O=730.70 Hi=739.60 Lo=728....



T-3 MACD BB Lines (green,red) -26.07 -26.55 -33.15 0.00



NOTES :

---



---



---



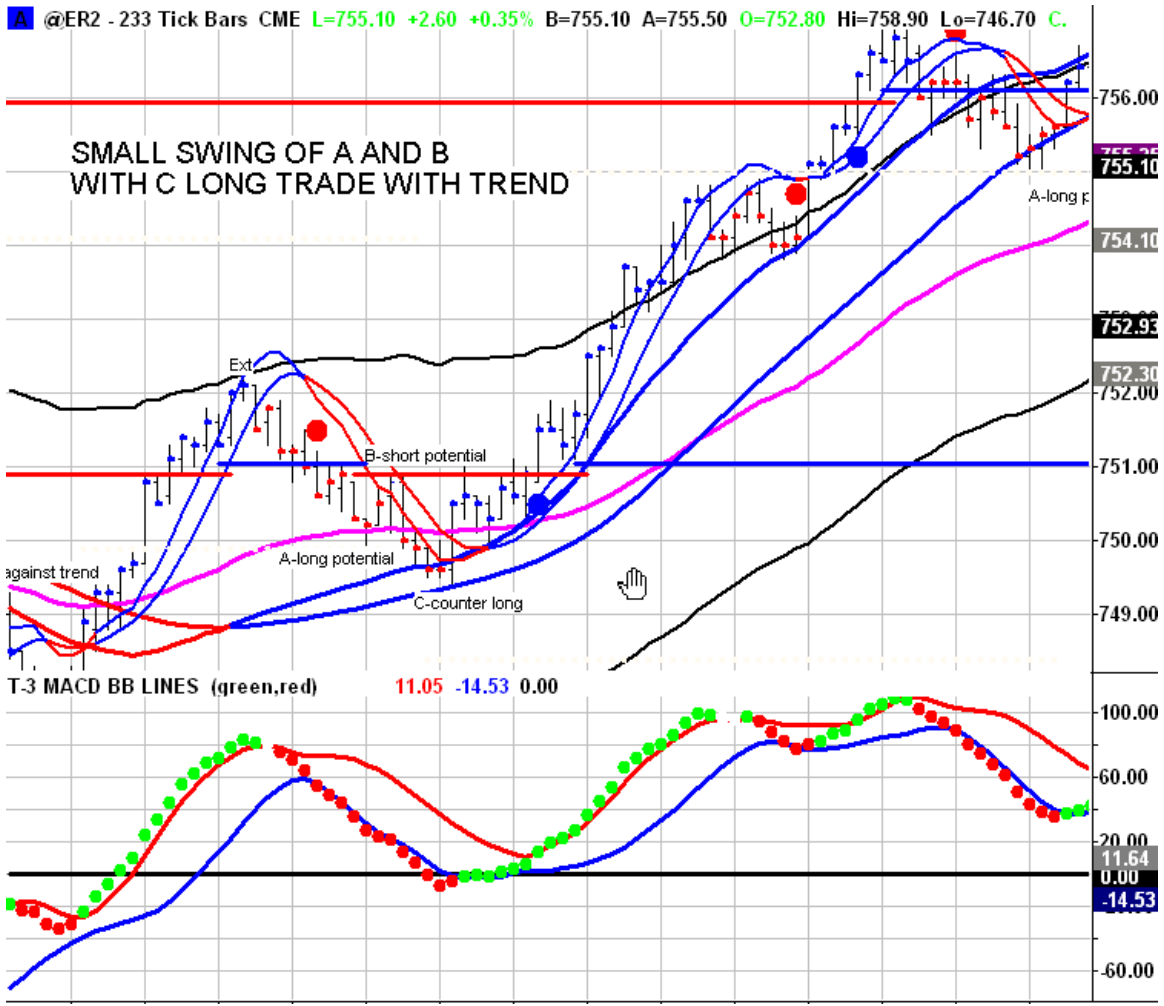
---



---



---



NOTES :

---



---



---



---



---

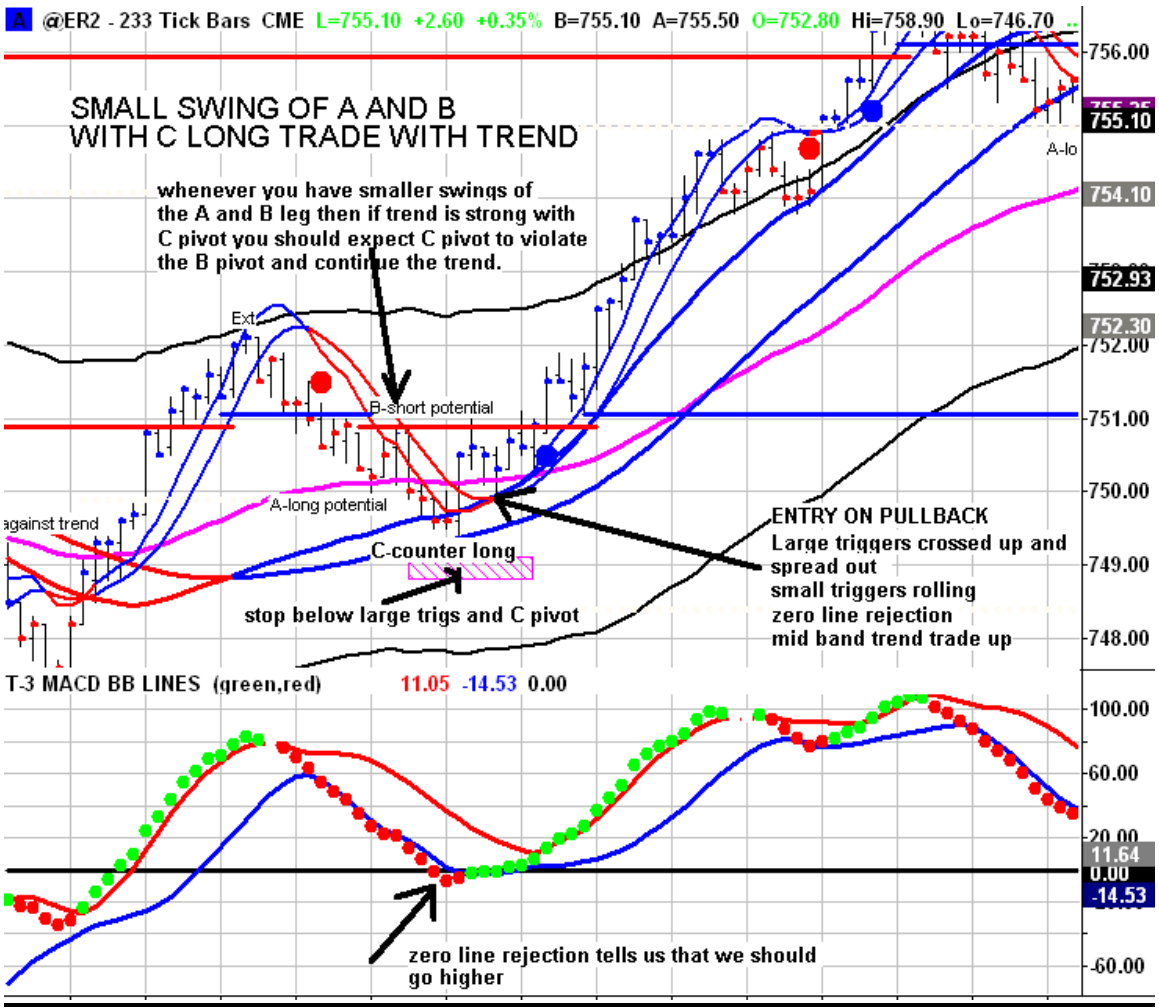


---



---





NOTES :

---



---



---



---

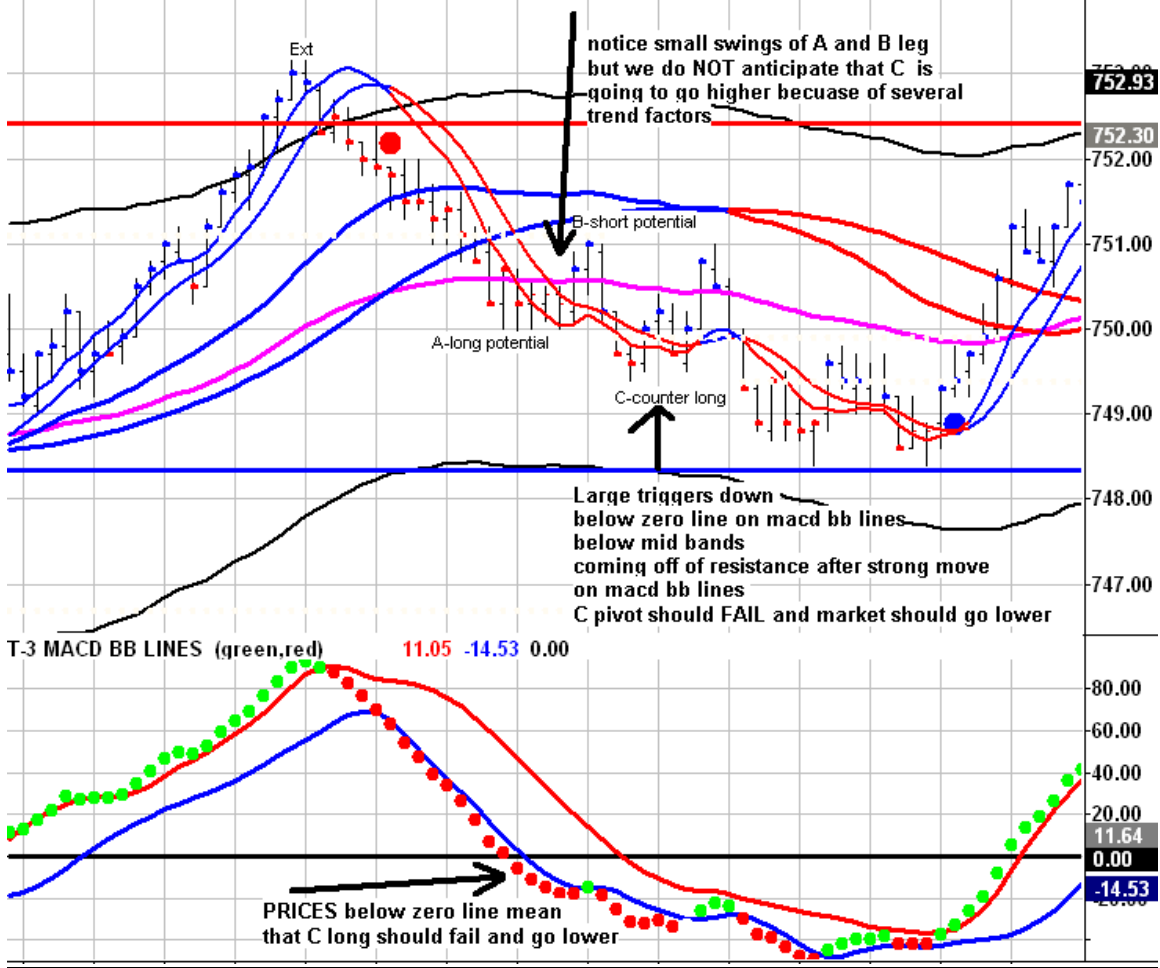


---



---

@ER2 - 233 Tick Bars CME L=755.10 +2.60 +0.35% B=755.10 A=755.50 O=752.80 Hi=758.90 Lo=746.70 C..



NOTES :

---



---



---



---



---



---



NOTES :

---



---



---



---



---



---

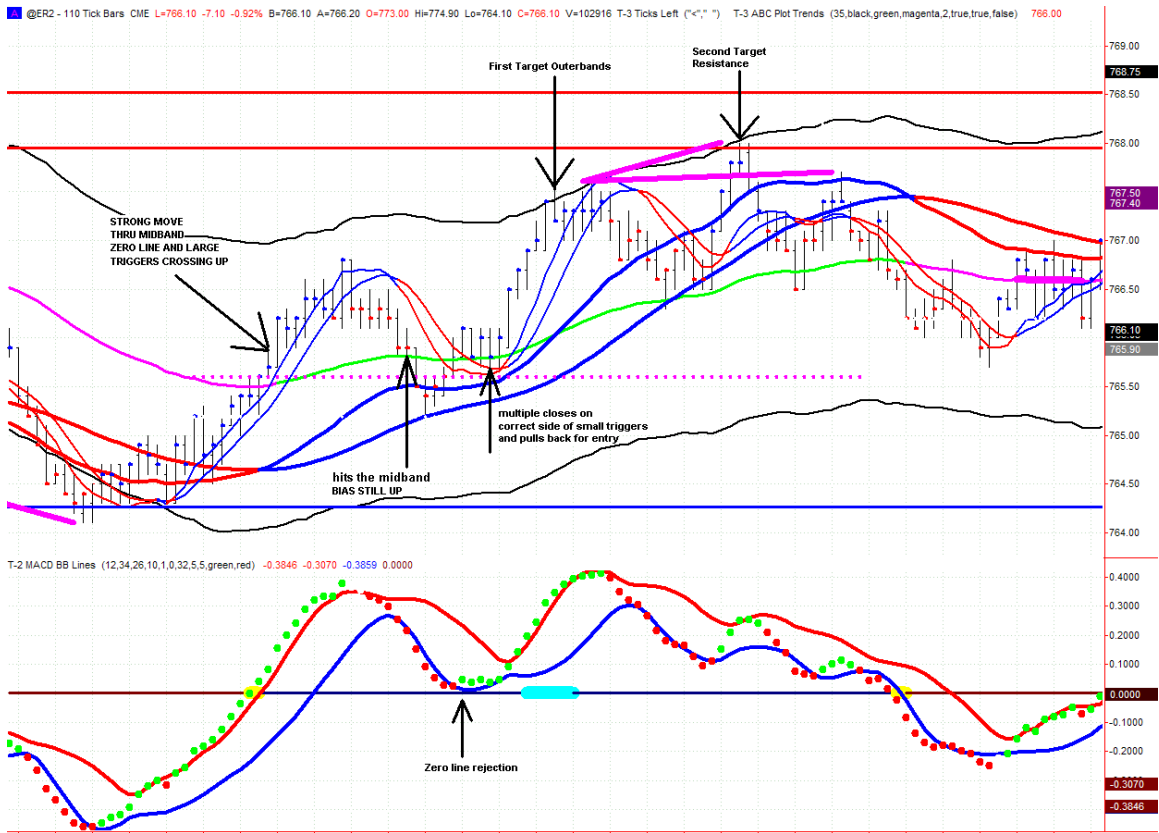


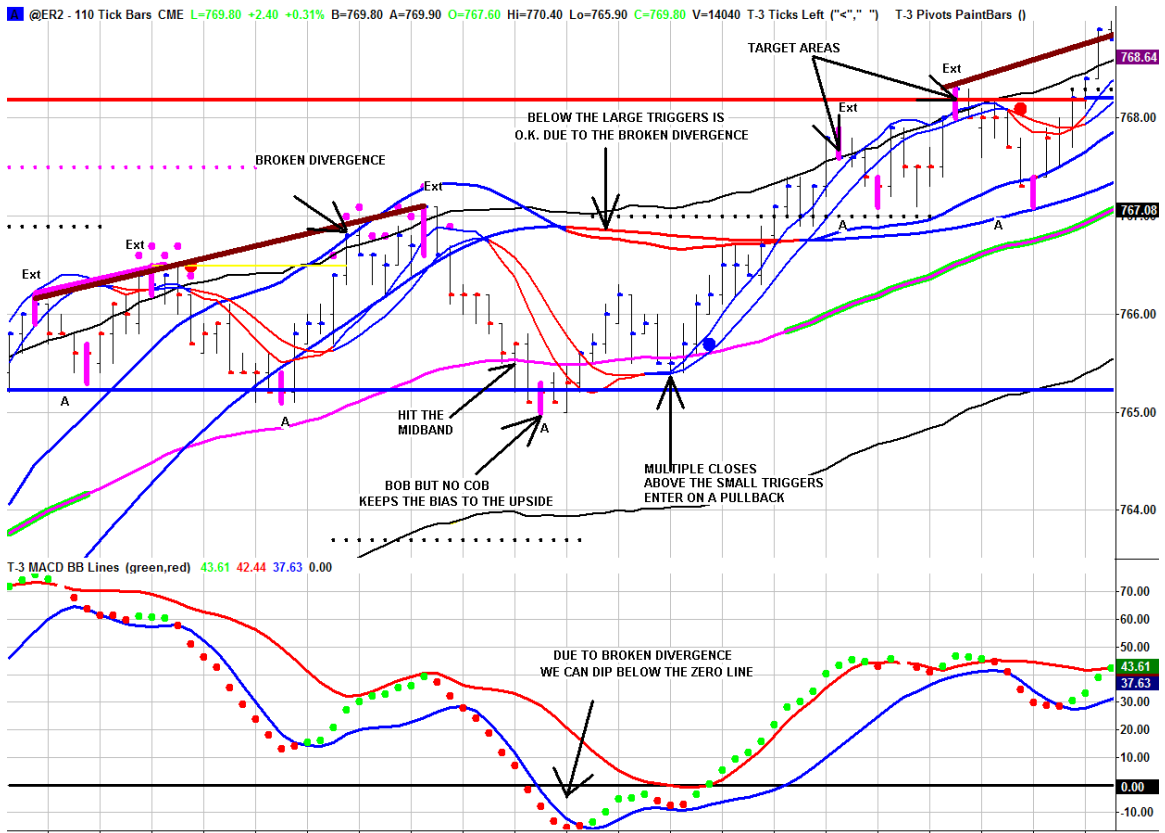
---



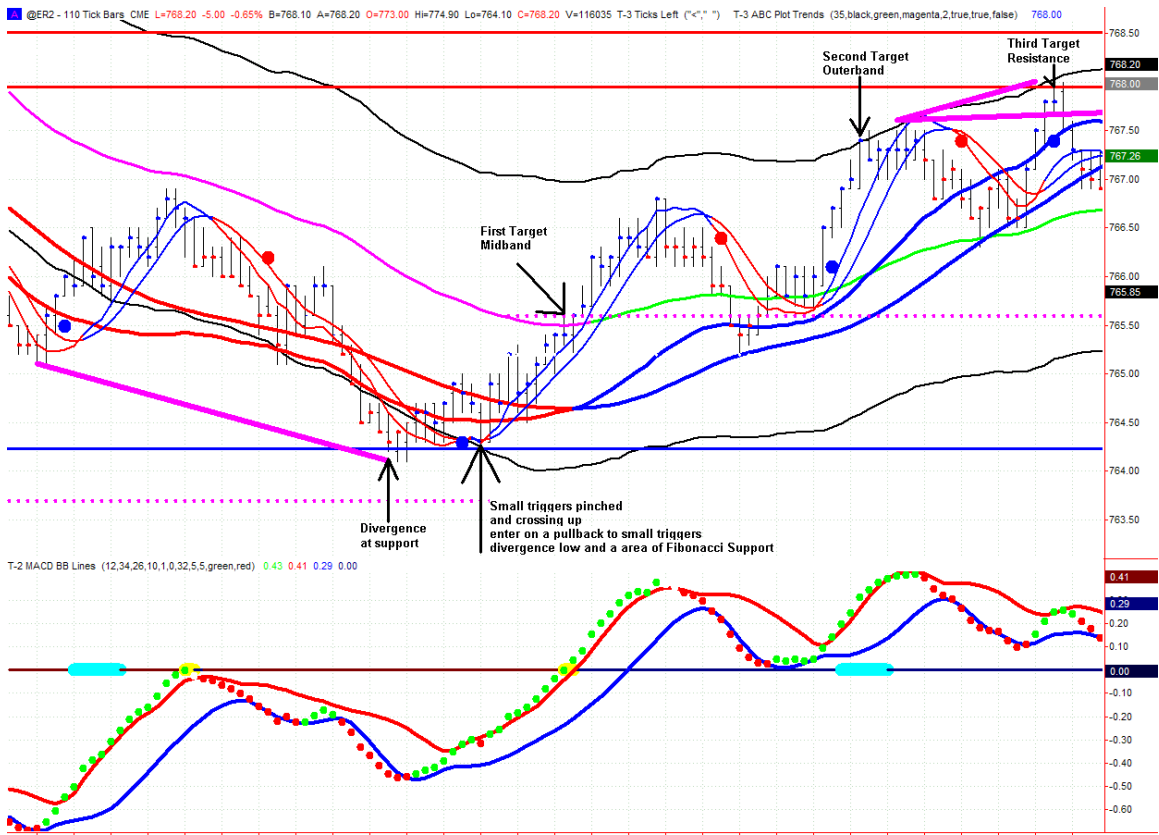
---

<b>TRADE SETUPS</b>	<b>ENTRY SETUP CHECKLIST</b>	<b>EXIT/STOP CHECK LIST</b>	<b>WHAT MUST BE TRUE TO ENTER</b>
<p><b>TREND Trade</b></p> <p><b>Only at Midband</b></p>	<p>Price must hit Midband.</p> <p>Enter long on market order after close above small trigger lines if distance to target area is more than 2 times risk, otherwise pullback to small triggers.</p> <p>Enter short on market order after close below small trigger lines if distance to target is more than 2 times risk, otherwise pullback to small triggers.</p> <p>Stop placed above pivot high (short) or stop placed below pivot low (long)</p>	<p>Outer band or Fibonacci area will be the first target.</p> <p>When target area is reached, trail stop behind small triggers.</p>	<p><b>NO DIVERGENCE PRESENT</b></p> <p><b>IF BROKEN DIVERGENCE WE LIKE TREND TRADES until Midband changes. This will signal a BOB/COB has occurred.</b></p> <p>For long trades you must have a bias to the upside</p> <p>For short trades you must have a bias to the downside</p>

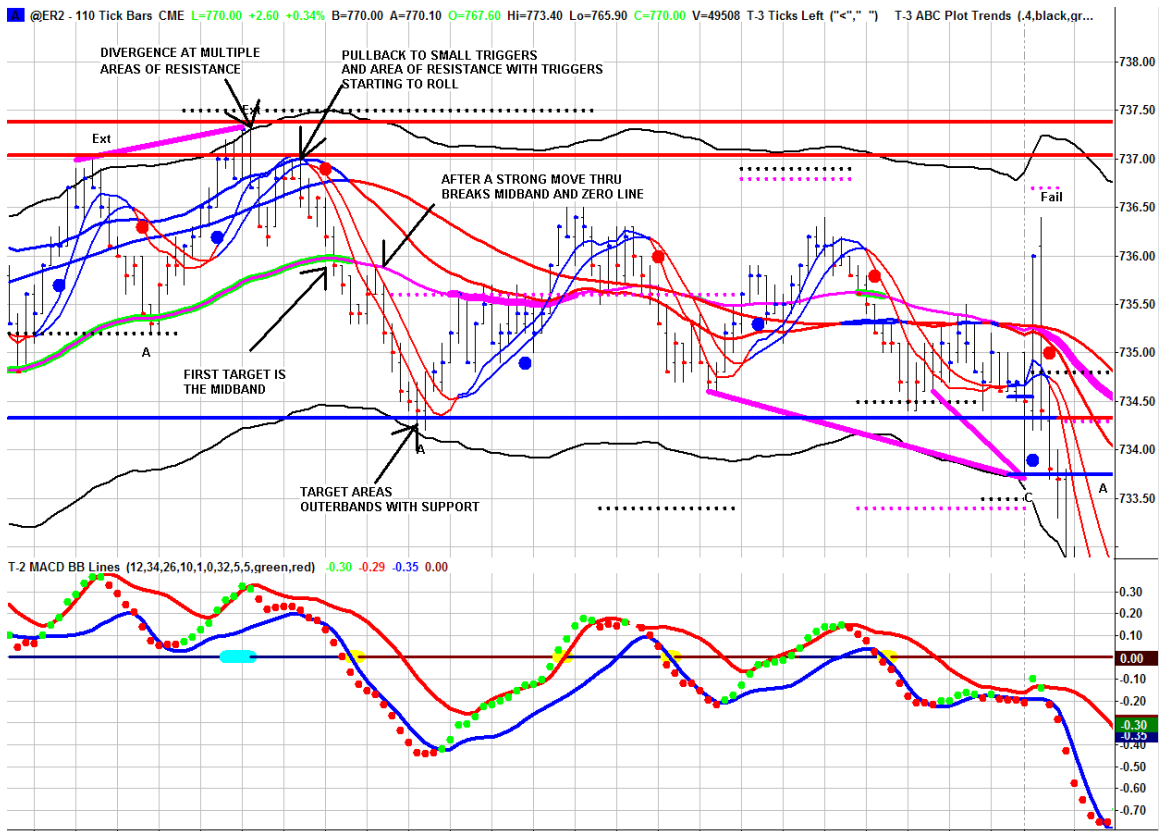




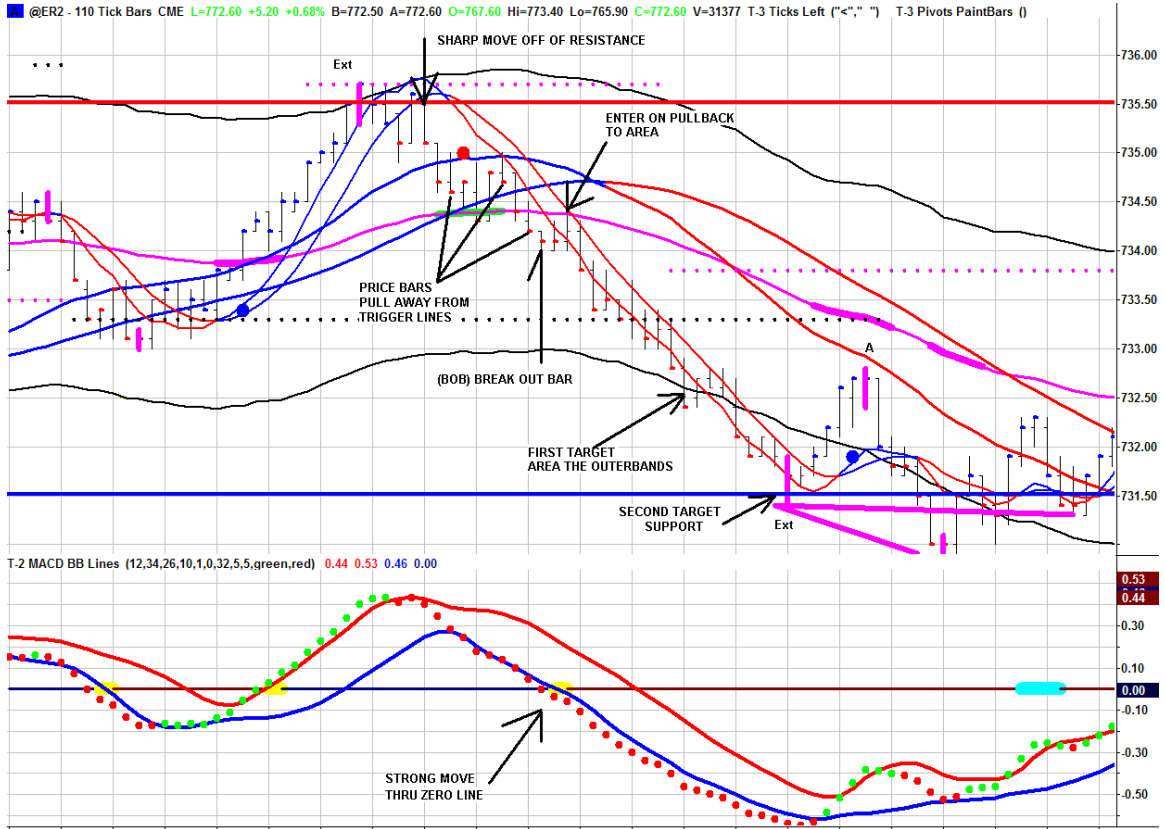
<b>TRADE SETUPS</b>	<b>ENTRY SETUP CHECKLIST</b>	<b>EXIT/STOP CHECK LIST</b>	<b>WHAT MUST BE TRUE TO ENTER</b>
<p><b>COUNTER TREND TRADE</b></p> <p><b>Only at FIBONACCI AREAS</b></p>	<p>Must reach Fibonacci support area for long. Must reach Fibonacci resistance area for short.</p> <p>Divergence must be confirmed upon close of bar.</p> <p>Enter long on market order after close above small trigger lines if distance to target area is more than 2 times risk, otherwise pullback to small triggers.</p> <p>Enter short on market order after close below small trigger lines if distance to target is more than 2 times risk, otherwise pullback to small triggers.</p> <p>Stop placed above divergence high (short) or stop placed below low (long).</p>	<p>Outer band or Fibonacci area will be the first target.</p> <p>When target area is reached, trail stop behind small triggers.</p>	<p><b>IF BROKEN DIVERGENCE NO MORE COUNTER TREND TRADES.</b> Until you BOB/COB the Midband (your Midband will change colors)</p> <p>Large Triggers and Macd BB Lines must be signaling that the trend has a potential to change.</p>

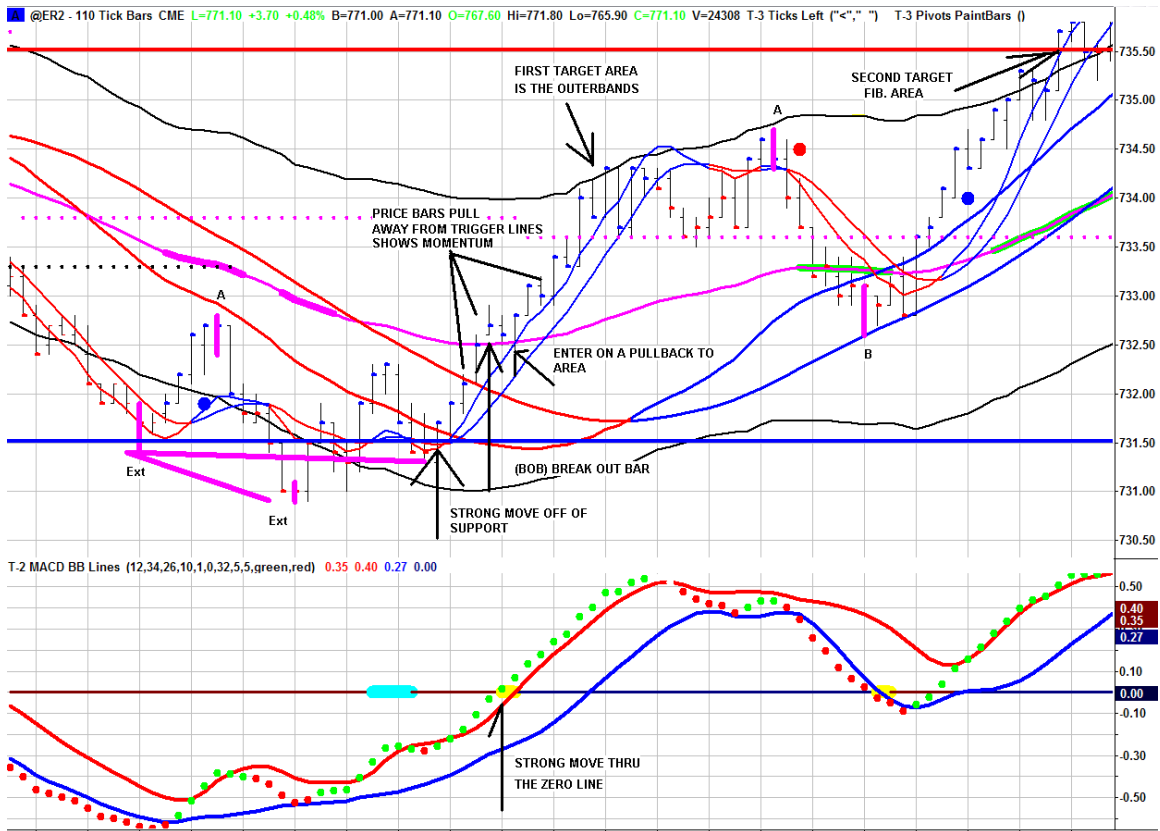




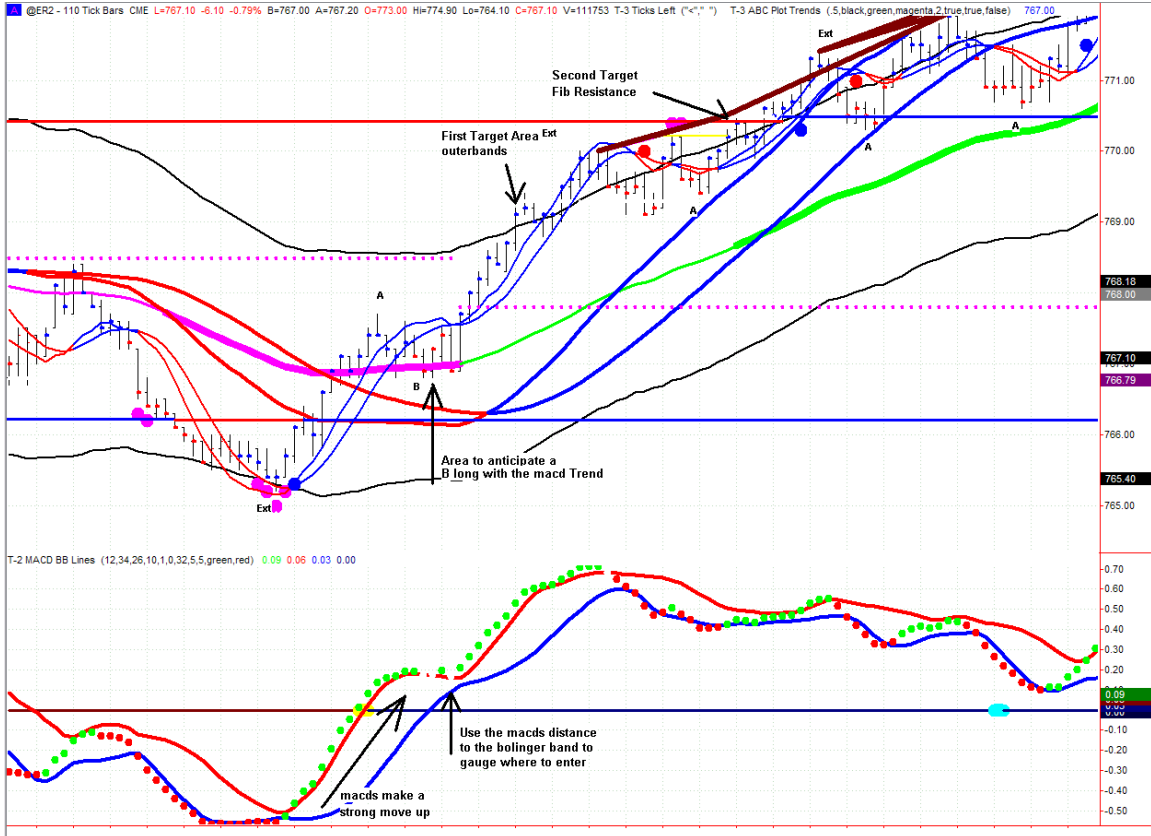


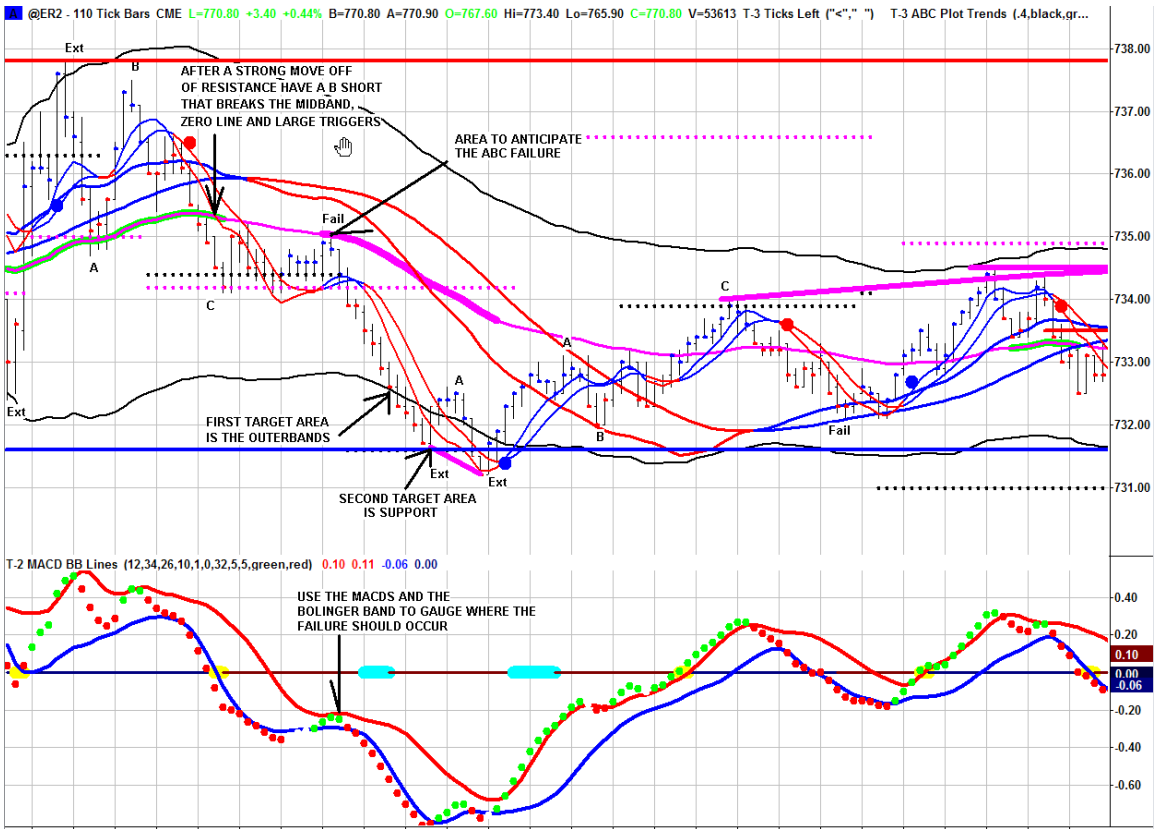
<b>TRADE SETUPS</b>	<b>ENTRY SETUP CHECKLIST</b>	<b>EXIT/STOP CHECK LIST</b>	<b>WHAT MUST BE TRUE TO ENTER</b>
<p><b>MOMENTUM TRADE</b></p> <p>Only at Midband</p>	<p>Macd BB Lines make a strong move through zero line. (Represented by a yellow dot).</p> <p>Full bar break out above Midband (long) or full bar break out below Midband (short).</p> <p>Enter on pullback to Midband area.</p> <p>Stop to be placed on opposite side of Midband allowing for volatility of the market.</p> <p>Trail stop to break even once profit equals initial risk.</p>	<p>Outer band or Fibonacci area will be the first target.</p> <p>When target area is reached, trail stop behind small triggers.</p>	<p>Profit target area must be greater than 2 times your risk.</p> <p>Must have bias up for long or bias down for short.</p> <p>Must come off of Fib support for long or Fib resistance for short.</p> <p>Small triggers must continue down and stay crossed down when entering short.</p> <p>Cannot be taken if broken divergence present.</p>



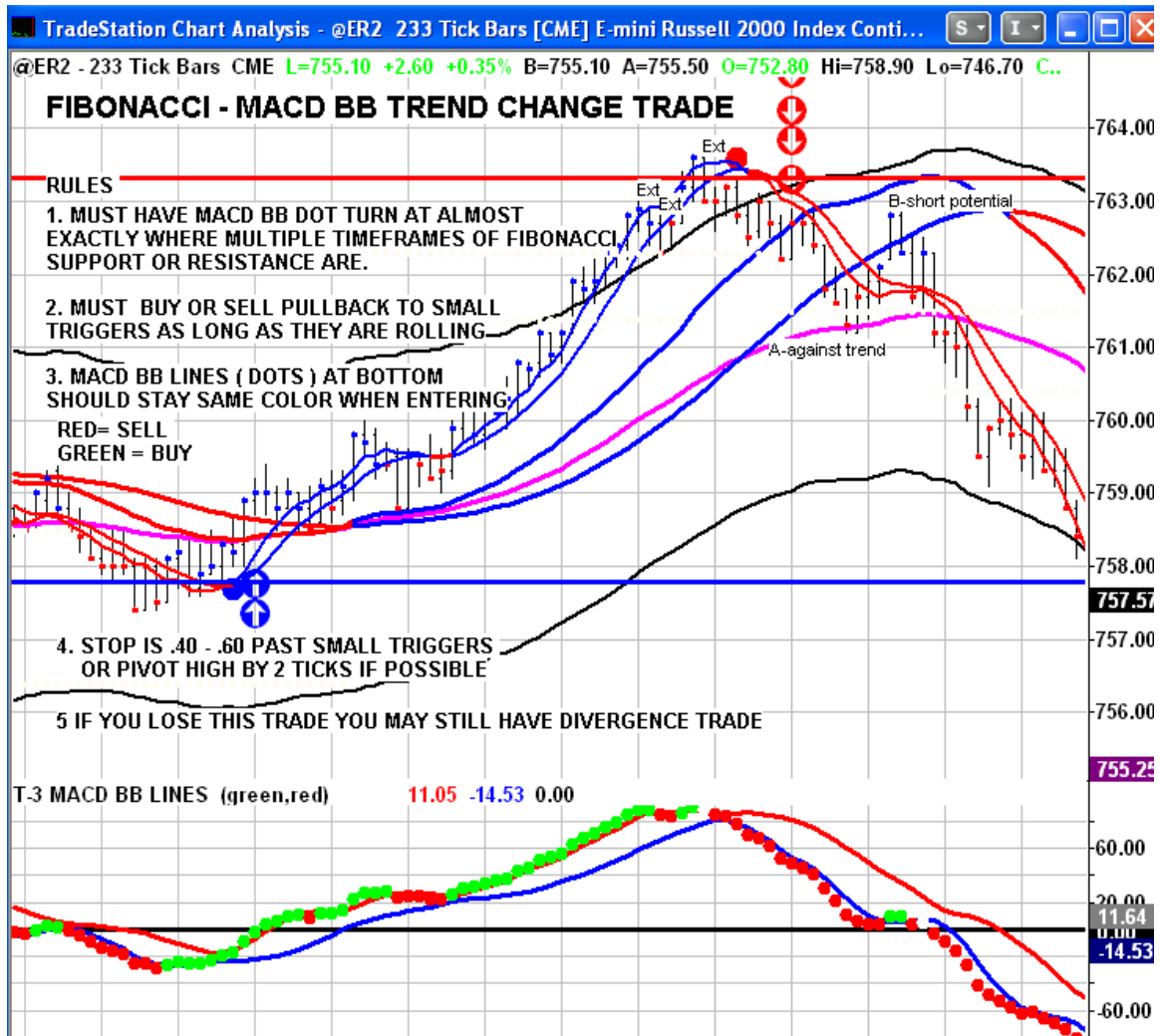


TRADE SETUPS	ENTRY SETUP CHECKLIST	EXIT/STOP CHECK LIST	WHAT MUST BE TRUE TO ENTER
<p>ANTICIPATORY TRADE</p> <p>B SHORT B LONG</p> <p>ABC FAILURE</p>	<p>Enter on limit order at Fibonacci area, large triggers, Midband or one to one.</p> <p>***Use distance of Macds to Bollinger bands to gauge entry area. ***</p> <p>Must have MACD BB TREND in anticipated trade direction.</p> <p>Stop placed beyond entry area</p>	<p>Outer band or Fibonacci area will be the first target.</p> <p>When target area is reached, trail stop behind small triggers.</p> <p>If MACD BB TREND changes exit trade immediately.</p> <p>Once B or Failure has plotted, stop is to be moved just beyond the B or Failure Pivot.</p>	<p>IF BROKEN DIVERGENCE NO MORE Anticipatory B SHORTS OR B LONGS Until you BOB/COB the Midband (your Midband will change colors)</p> <p>Fibonacci area must cause strong reversal.</p> <p>Price must be above large triggers or squeezing or rolling for long.</p> <p>Price must be below large triggers or squeezing or rolling for short.</p> <p>Must be close to or above zero line for long.</p> <p>Must be close to or below zero line for short.</p>





**THIS IS AN ADDITIONAL TRADE SETUP NOT COVERED IN THE RULES FOR A COUNTER TREND.**



NOTES :

---



---



---



---



---

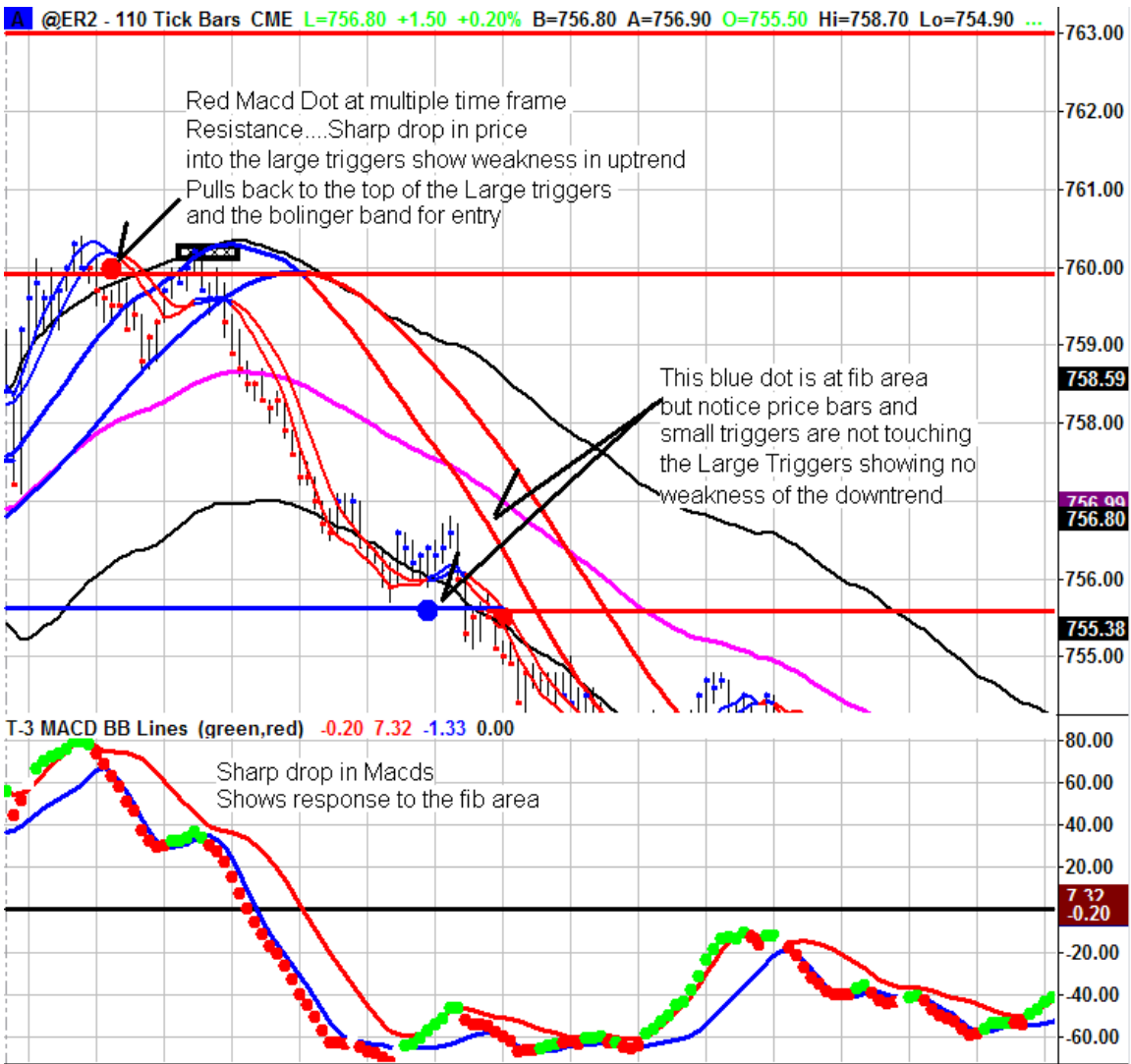


---



---





NOTES :

---



---



---



---



---

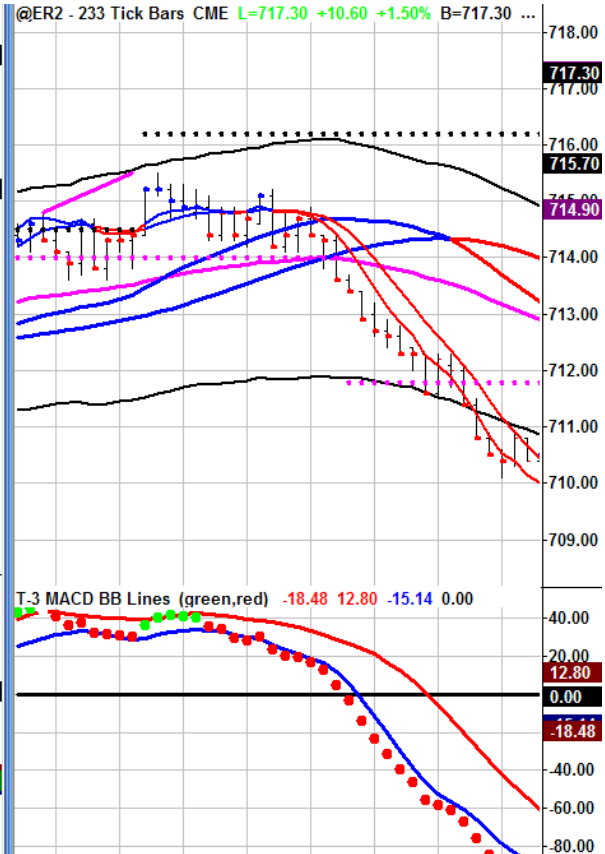
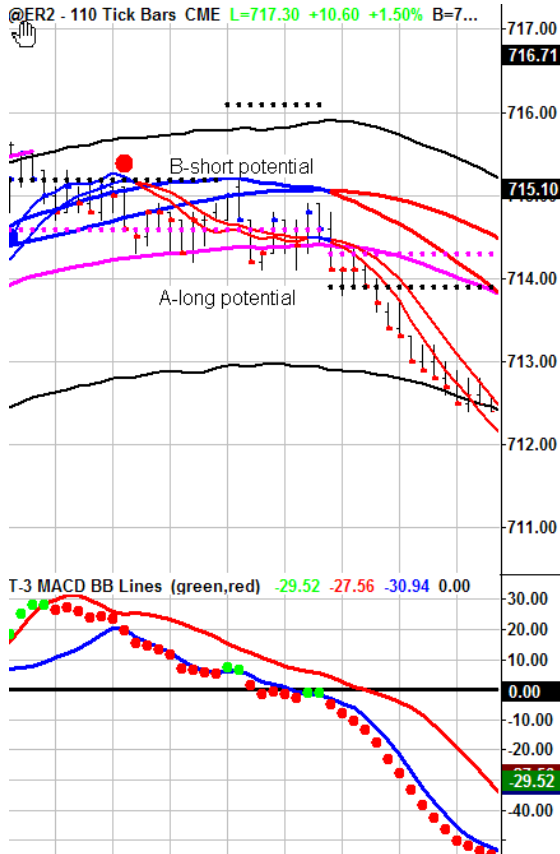


---



---

<b>Multiple Timeframes</b>				
<p><i>Using multiple timeframes for entries and exits requires you to be able to make decisions based on two (sometimes competing) charts. IF this is a problem for you don't use two charts.</i></p>	<p>Entry area must be on BOTH charts within a tick or two of each other or you must choose to use larger stop or use triggers and Macd BB lines to figure which is going to hold.</p> <p>When both charts agree on direction and area it creates a nice anticipation trade and more conservative setups.</p> <p>When they do not align then using multiple timeframes is not advisable.</p>			



NOTES :

---



---



---



---



---



---



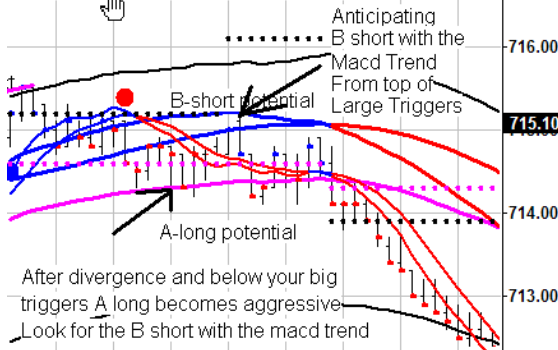
---



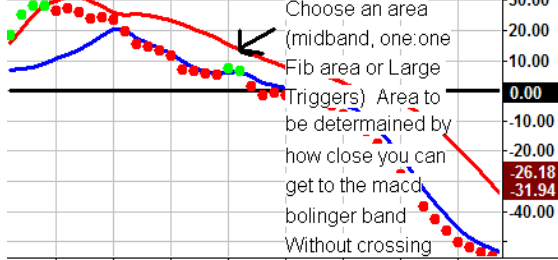
---

@ER2 - 110 Tick Bars CME L=717.40 +10.70 +1.51% B=7...

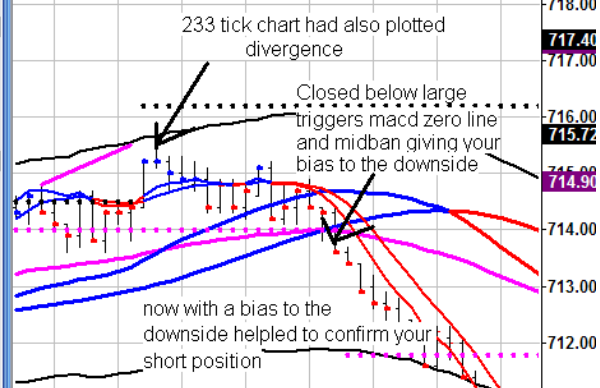
### Anticipation is the KEY



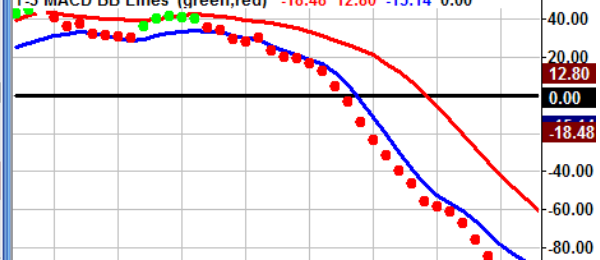
T-3 MACD BB Lines (green,red) -31.94 -26.18 -31.48 0.00



@ER2 - 233 Tick Bars CME L=717.40 +10.70 +1.51% B=717.30 ...



T-3 MACD BB Lines (green,red) -18.48 12.80 -15.14 0.00



NOTES :

---



---



---



---



---



---



---

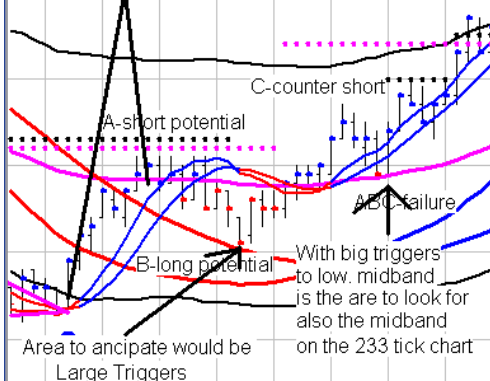


---

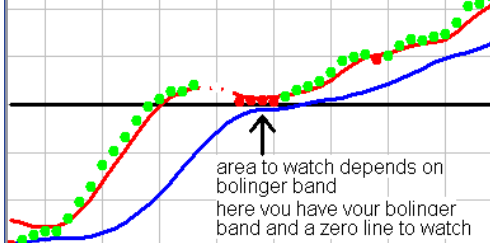
@ER2 - 110 Tick Bars CME L=717.70 +11.00 +1.56% B=7...

### Anticipation is the Key

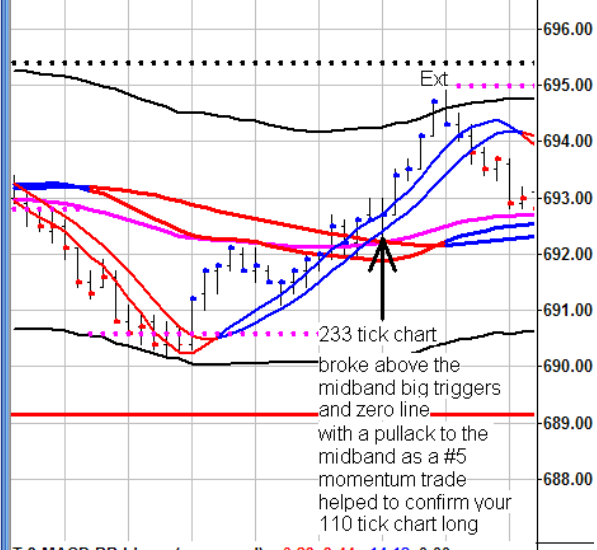
Divergence and above the large triggers  
Midband shorts become aggressive  
Start looking for a B long with the macd Trend



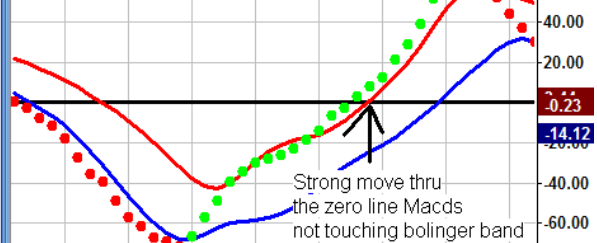
T-3 MACD BB Lines (green,red) 5.18 11.65 0.14 0.00



@ER2 - 233 Tick Bars CME L=717.70 +11.00 +1.56% B=717.70 ...

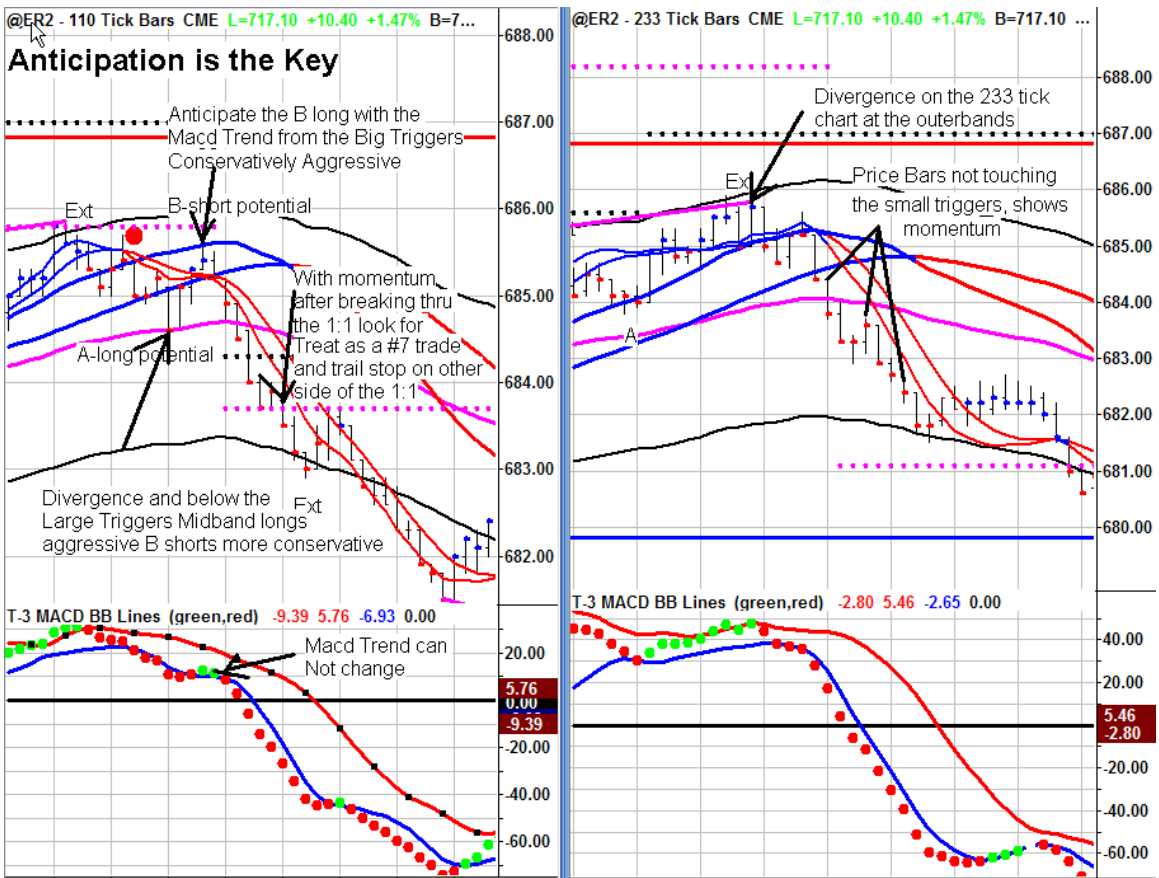


T-3 MACD BB Lines (green,red) -0.23 3.44 -14.12 0.00



NOTES :

- \_\_\_\_\_
- \_\_\_\_\_
- \_\_\_\_\_
- \_\_\_\_\_
- \_\_\_\_\_
- \_\_\_\_\_
- \_\_\_\_\_
- \_\_\_\_\_
- \_\_\_\_\_
- \_\_\_\_\_



NOTES :

---



---



---



---



---



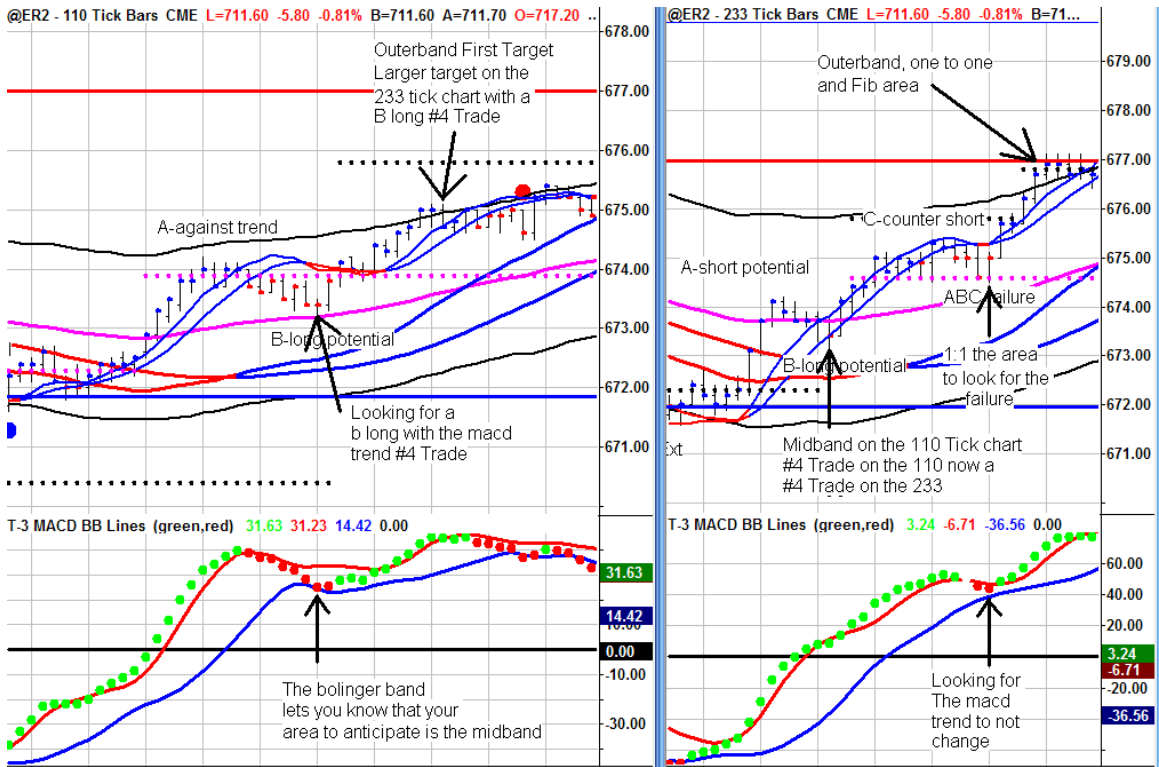
---



---



---



NOTES :

---



---



---



---



---



---



---



---

**How to look at expected outcome of each indicator keeping in mind it is the cumulative power of the indicators that gives you your trade setups.**

<b>INDICATOR</b>	<b>EXPECTED</b>	<b>BUY OR SELL MODE?</b>
<b>Larger Trigger Lines</b>		
- crossed up or down ?		
- spread out wide or not		
- above or below ?		
<b>Small Trigger Lines</b>		
- crossed up or down		
- spread wide or not		
<b>MACD BB LINES</b>		
- Divergence for trade?		
- Divergence possible?		
-Divergence Broken?		
- Strength of BB lines?		
- Zero Line area is?		
<b>Key Fibonacci areas?</b>		
- Distance to or from next		
- Expect to hold or break?		
<b>Outer Trend Bands</b>		
<b>Mid Band Position?</b>		
<b>One to Ones position</b>		
TYPE OF SETUP?		
REWARD POTENTIAL		
RISK		





# T-3 Fibs

*ProTrader*

**NEXGEN**  
SOFTWARE SERVICES

[www.nss-t3.com](http://www.nss-t3.com)

3400 Research Forest Dr. Suite B9, The Woodlands, TX. 77381

Tel: 281.419.2110